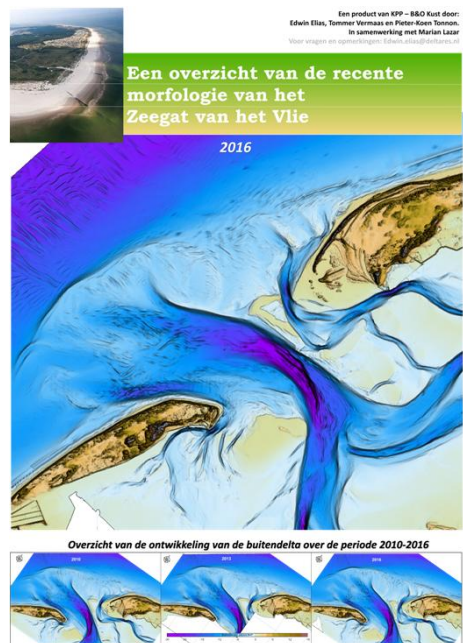
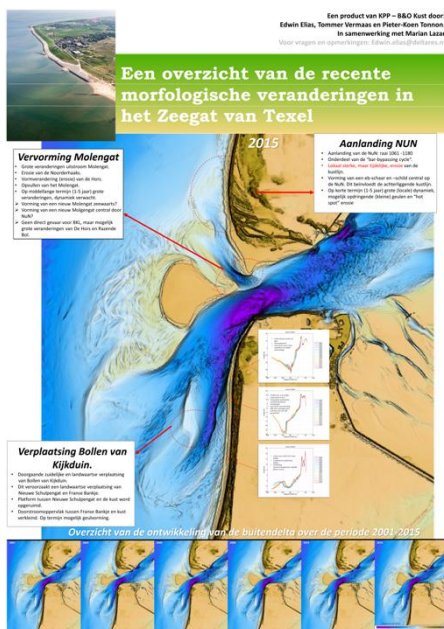


Huidige ontwikkelingen van de Zeegaten

Een achtergrond tbv de Toesting



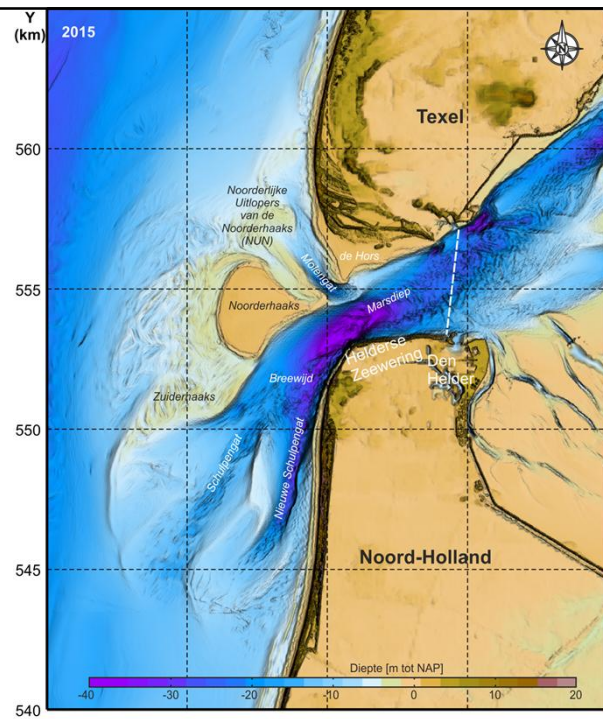
Zeegaten

- Zeegat van Texel (Marsdiep)
- Eierlandse Gat
- Zeegat van het Vlie
- Zeegat van Ameland

Voor ieder zeegat

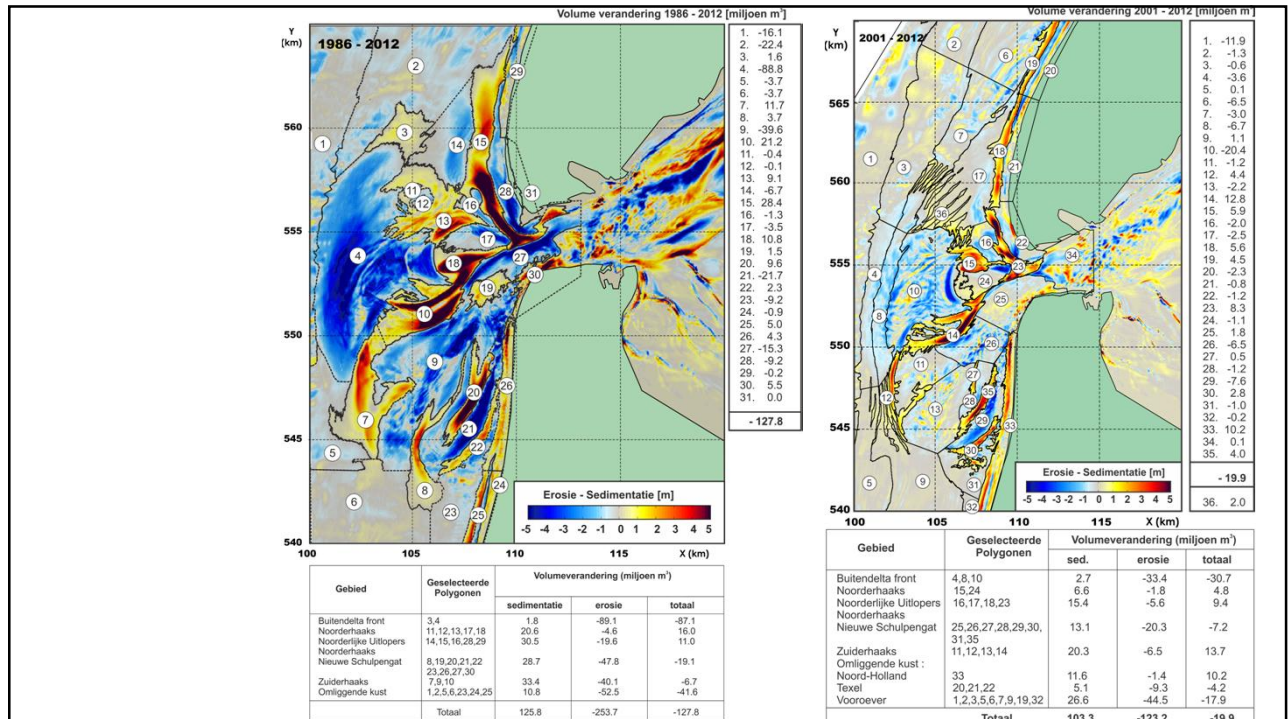
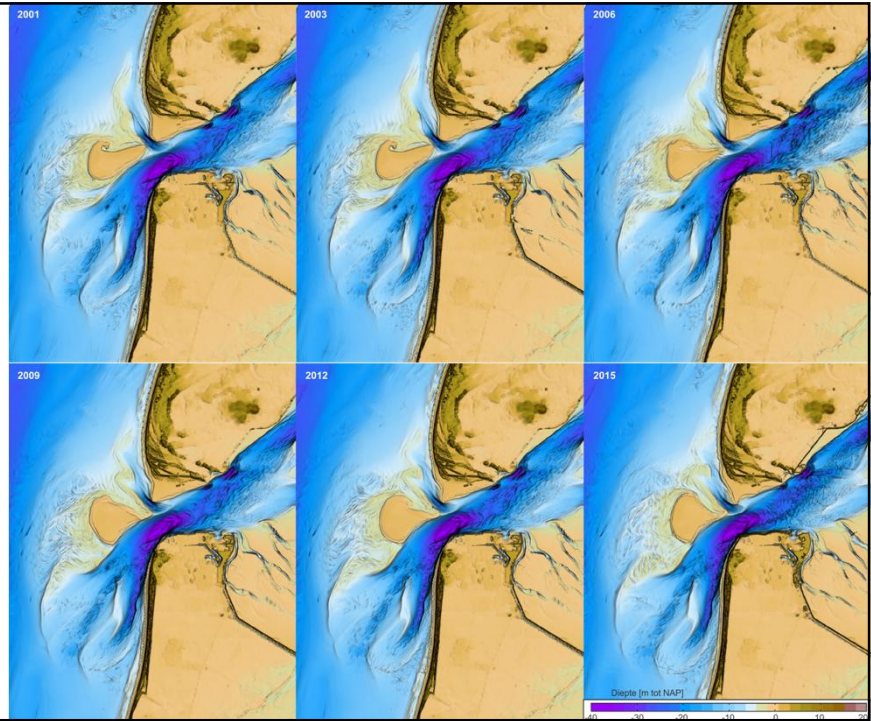
- Ligging van de belangrijkste geulen en platen (meest recente bodem)
- Ontwikkeling op middellange termijn
- Huidige Ontwikkeling
- Eventuele Bijzonderheden

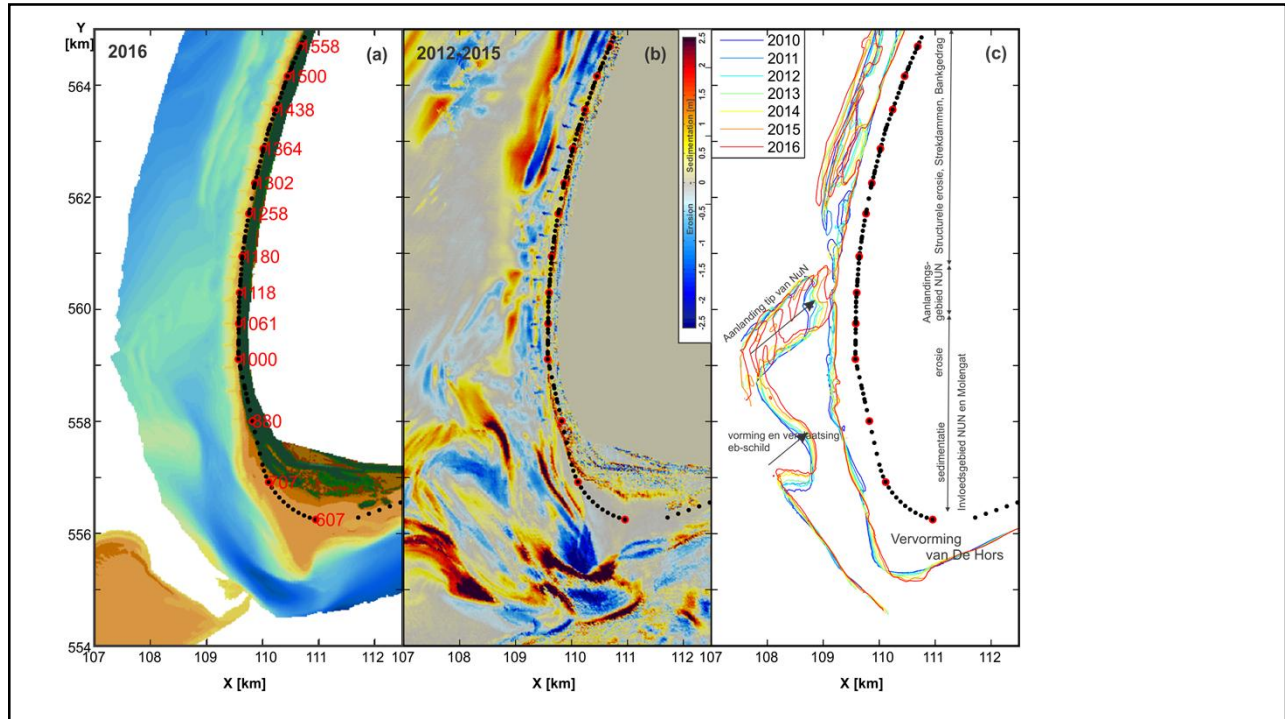
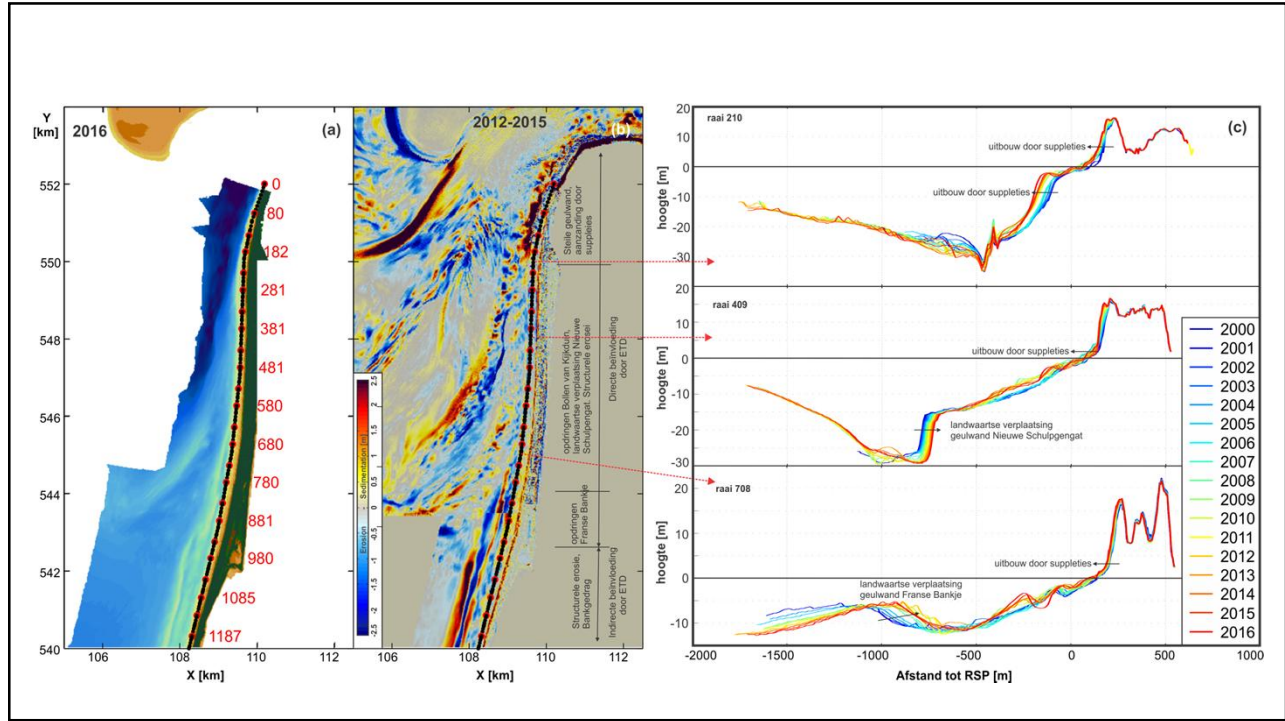
Zeegat van Texel; Geulen en platen



Middellange termijn ontwikkelingen

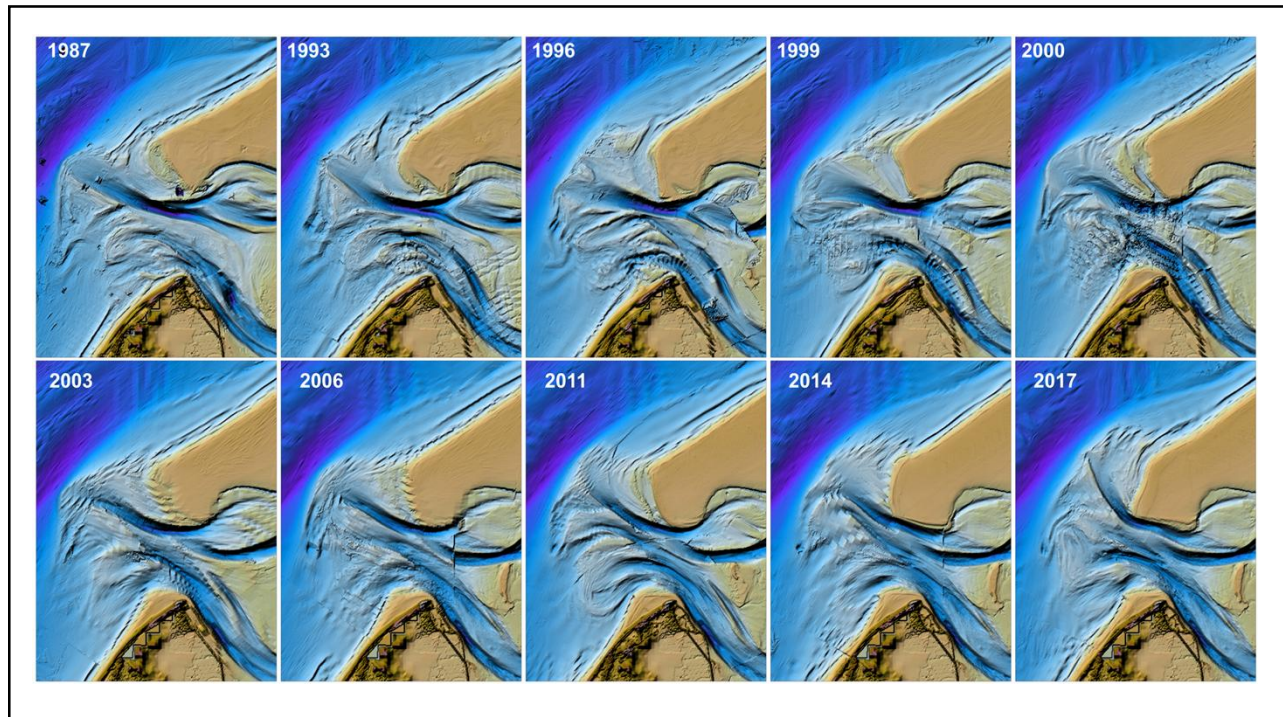
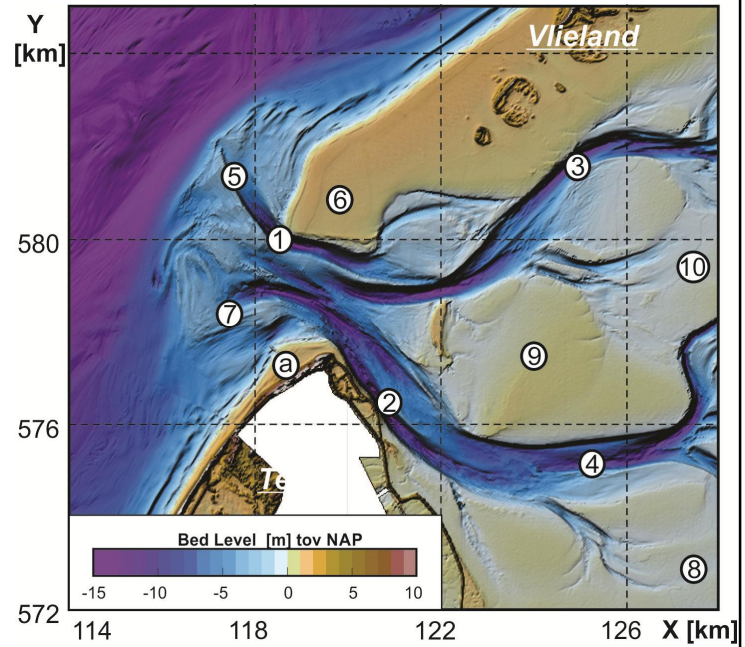
- NuN
- Schulpengat en Nieuwe Schulpengat
- Zuiderhaaks versus Noorderhaaks

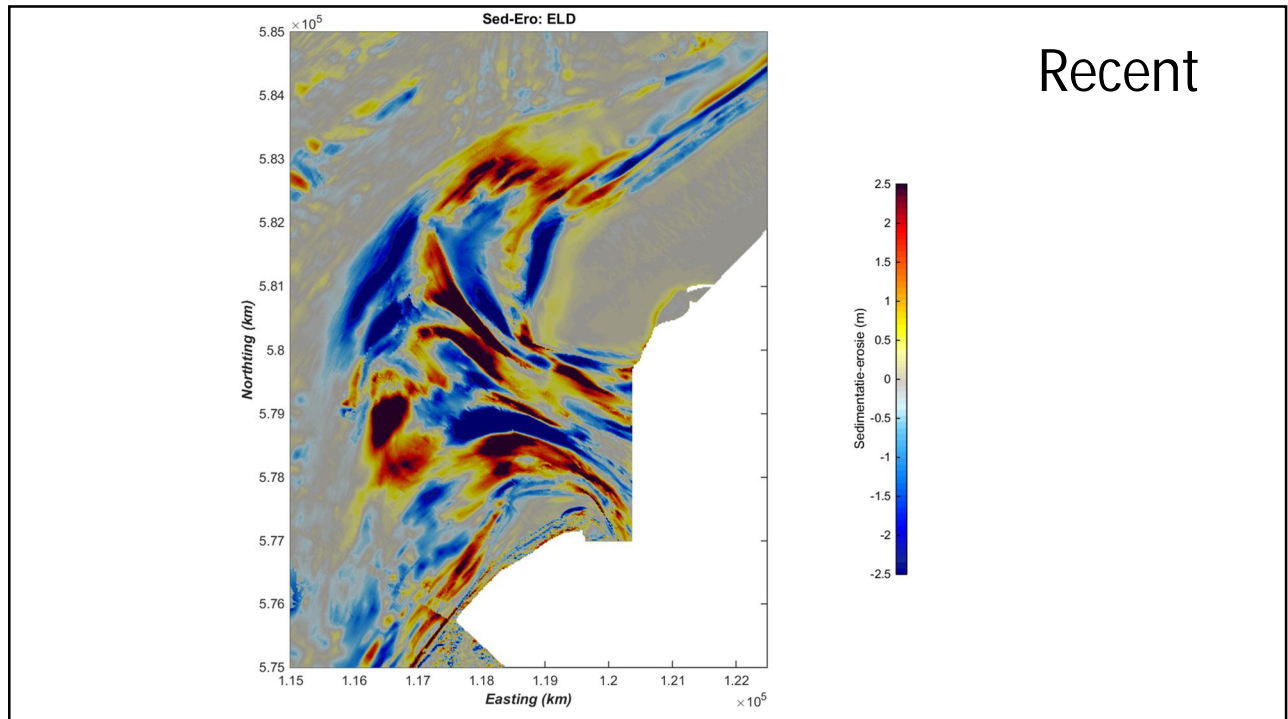
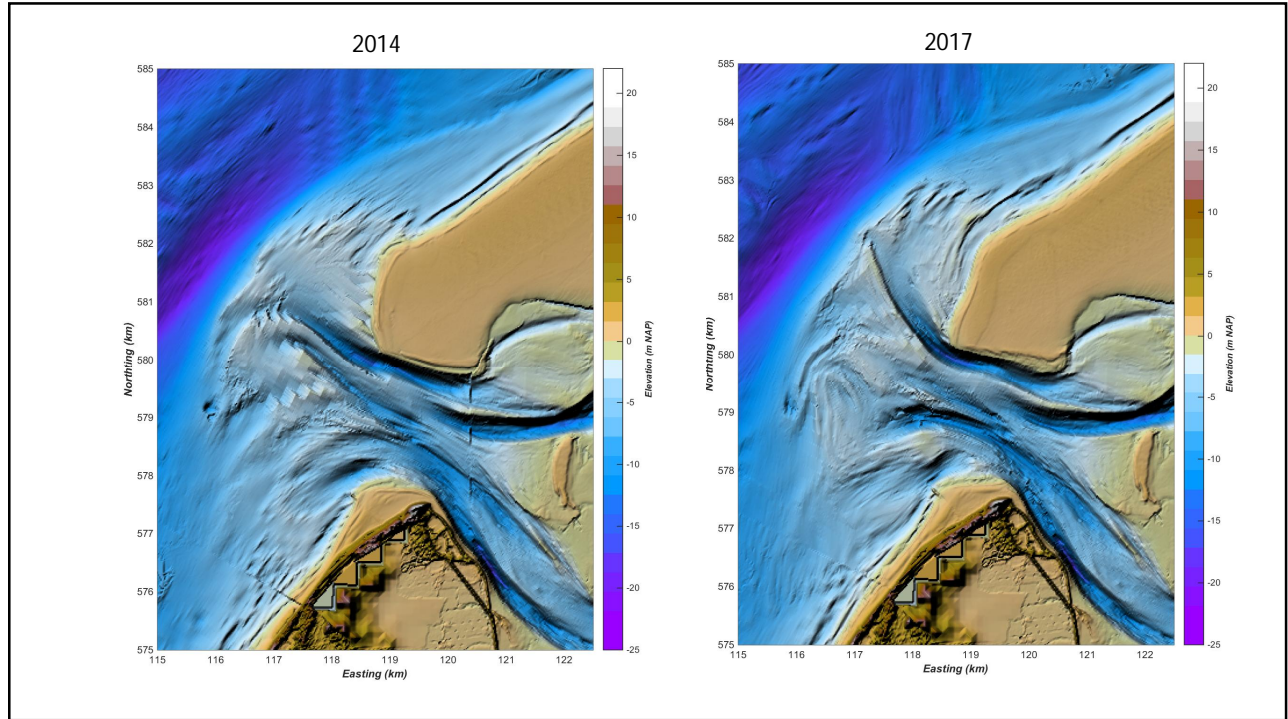




Eierlandse Gat; Geulen en platen

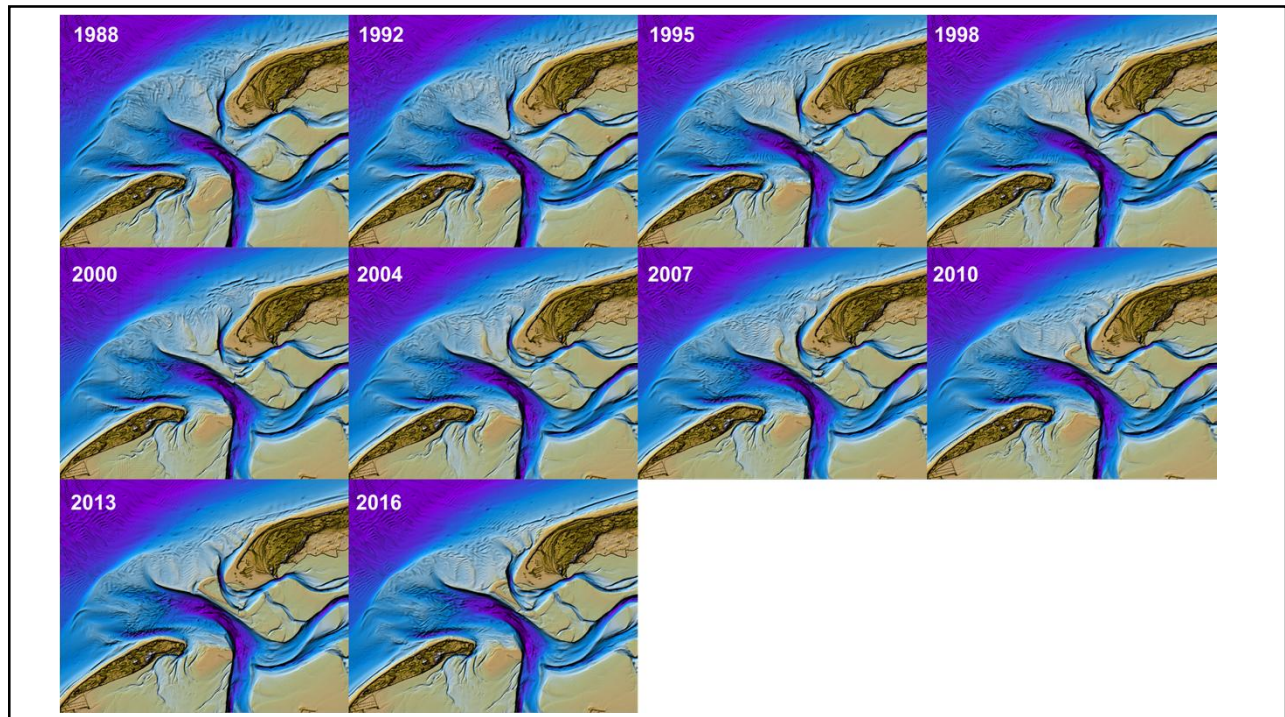
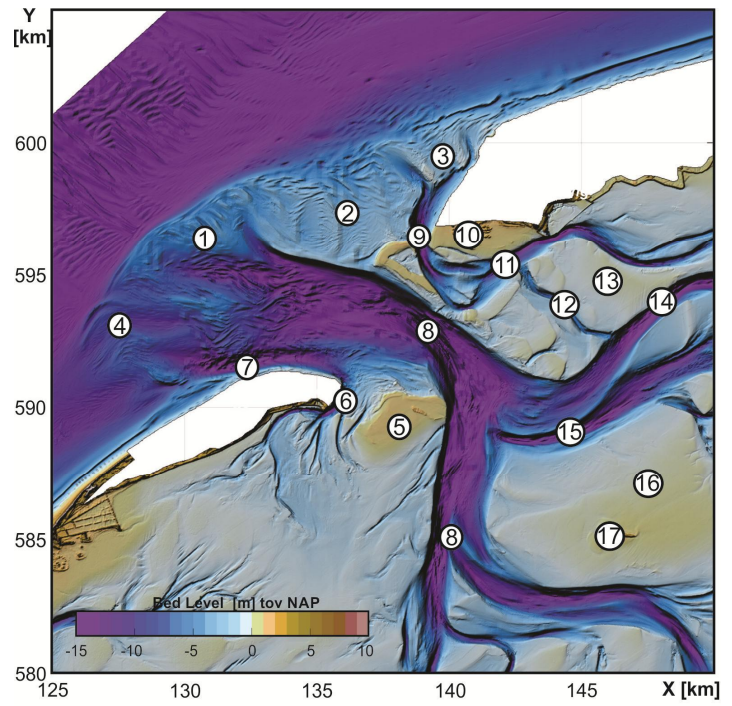
- | | |
|-------------------------|---------------------------|
| (1). Engelsmangat | (6). Vliehors |
| (2). Robbegat | (7). Dwars in de weg |
| (3). Keteldiep | (8). Vlakte van de Kerken |
| (4). Vogelzwin | (9). Hengst |
| (5). Eierlandse Gronden | (10). Waargronden |
| (6). Vliehors | (a). Eierlandse Dam |

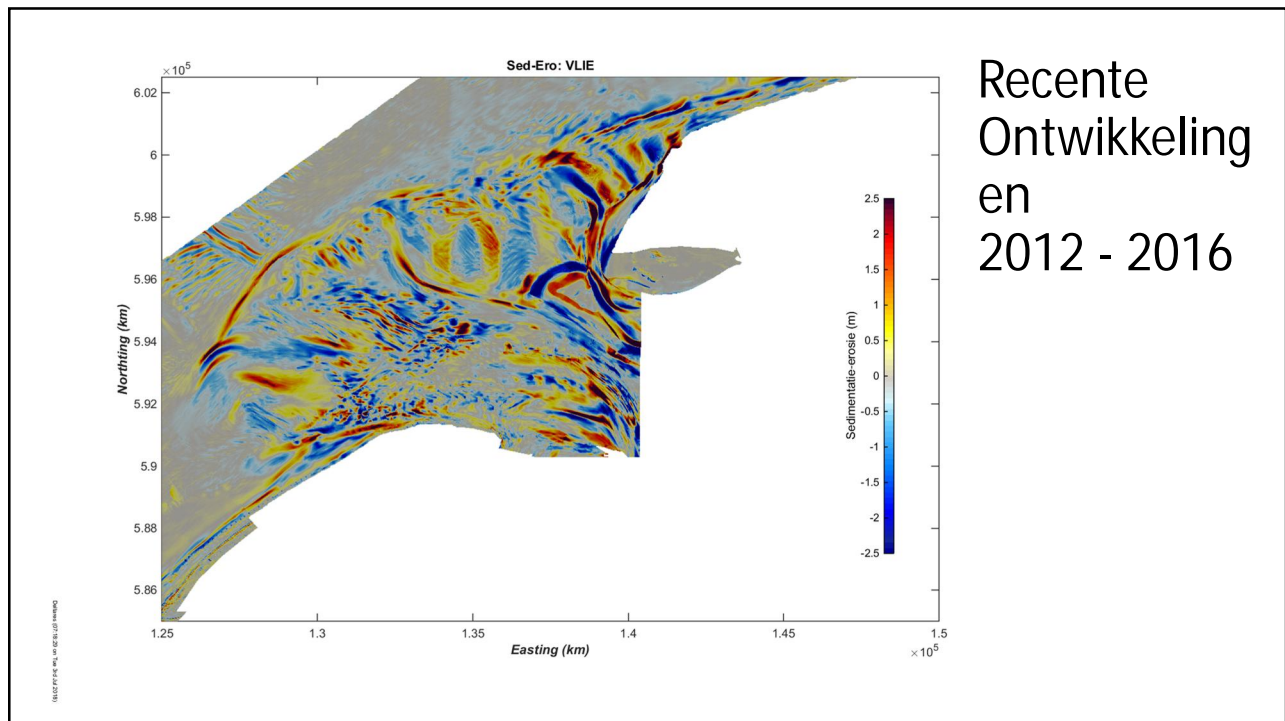
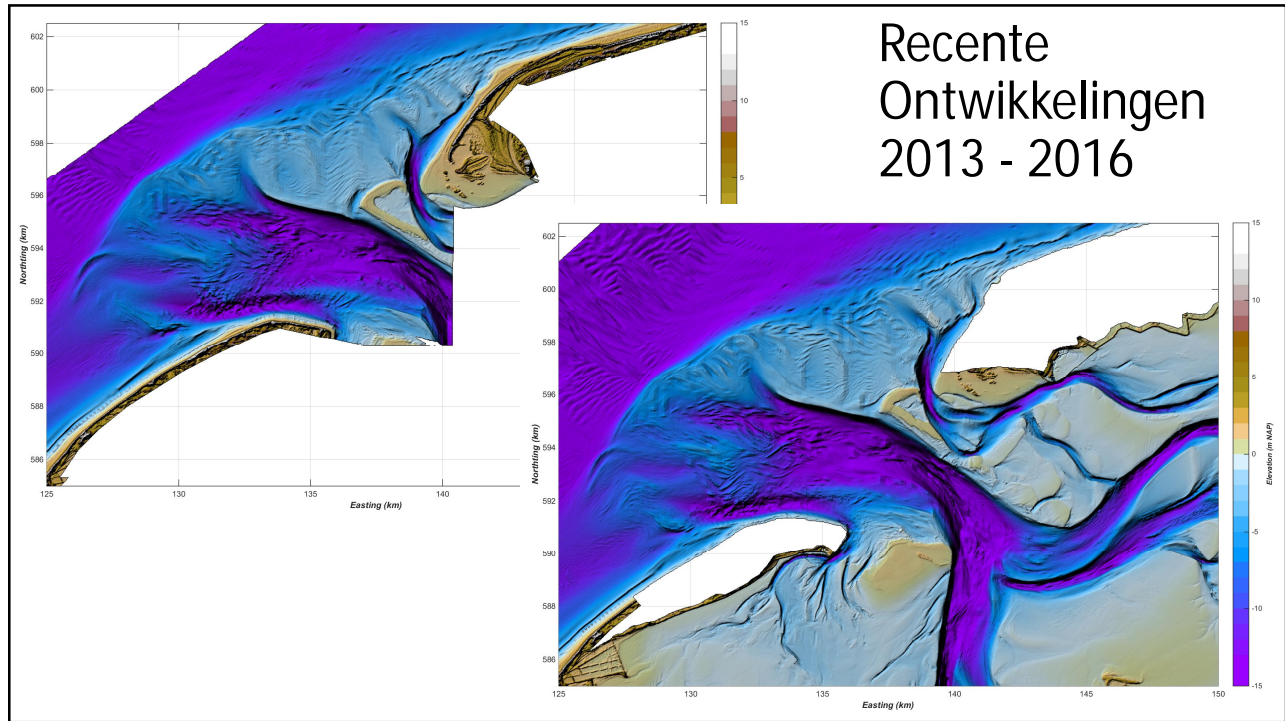




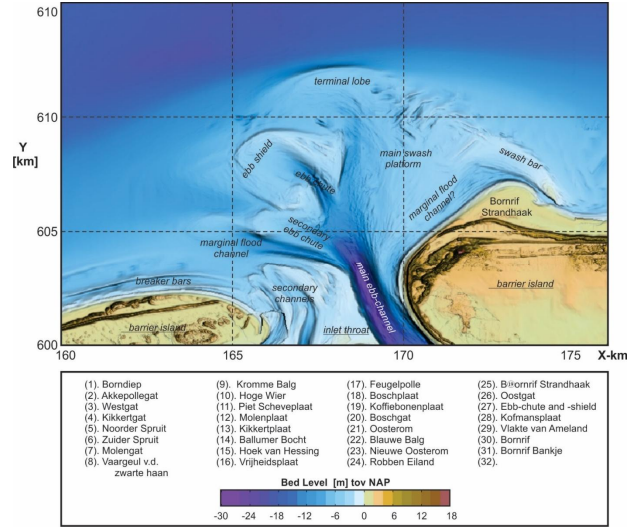
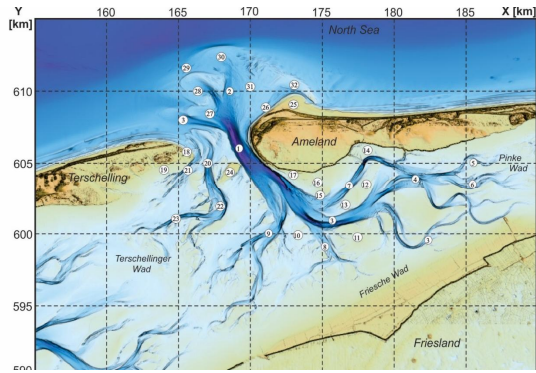
Het Vlie; Geulen en platen

- | | | |
|----------------------------------|---------------------|-------------------|
| 1. Westergronden | 7. Zuiderstortemelk | 12. Schlenk |
| 2. Noordwestgronden | 8. Vliestroom | 13. Groote Plaat |
| 3. Noordergronden | 9. Boomkensdiep | 14. Noordmeep |
| 4. Gronden van het
Stortemelk | 10. Noordvaarder | 15. Westmeep |
| 5. Richel | 11. Schuitengat | 16. Grienderwaard |
| 6. Vliesloot / Vlielandbalg | | 17. Griend |

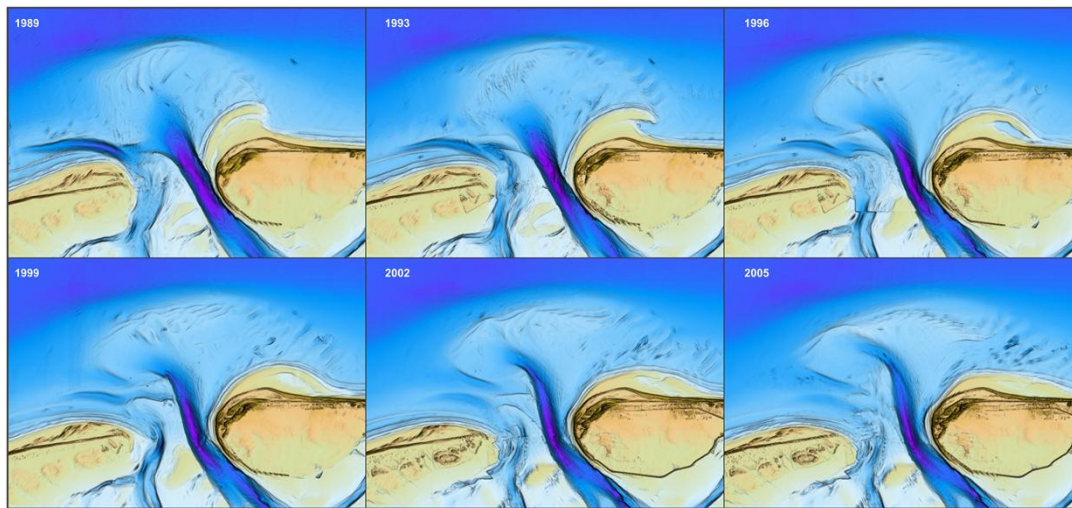


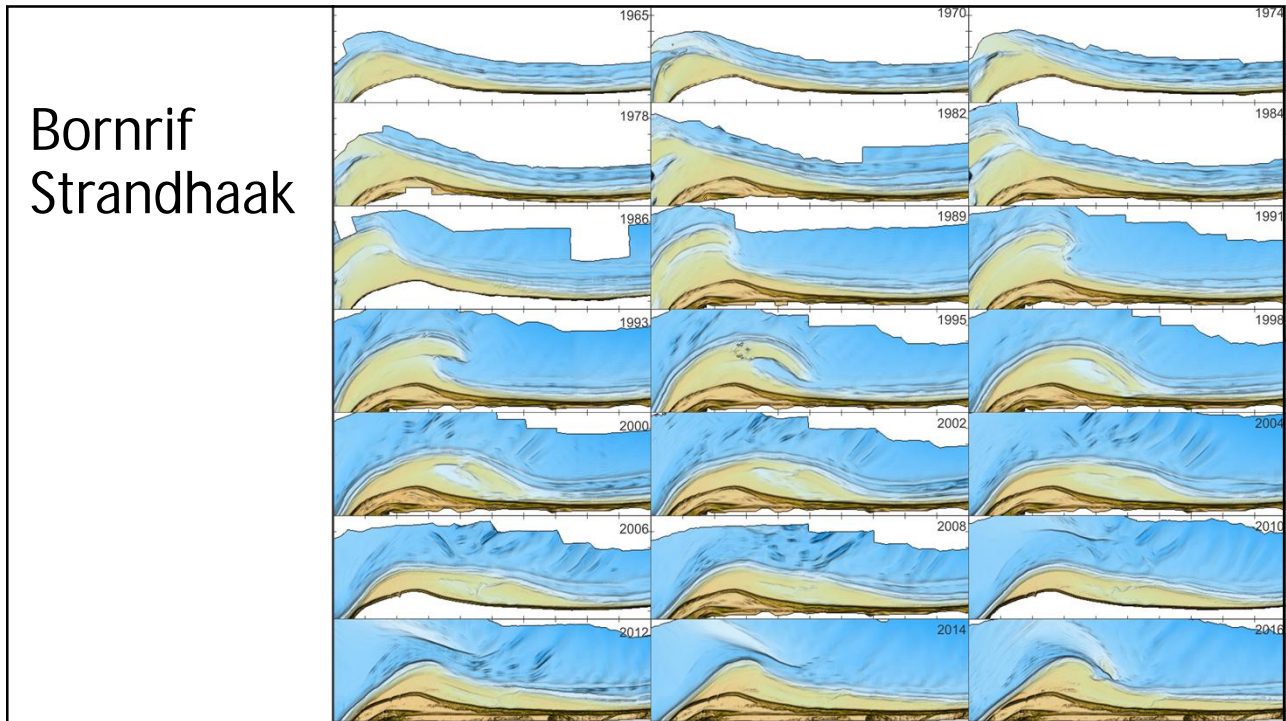
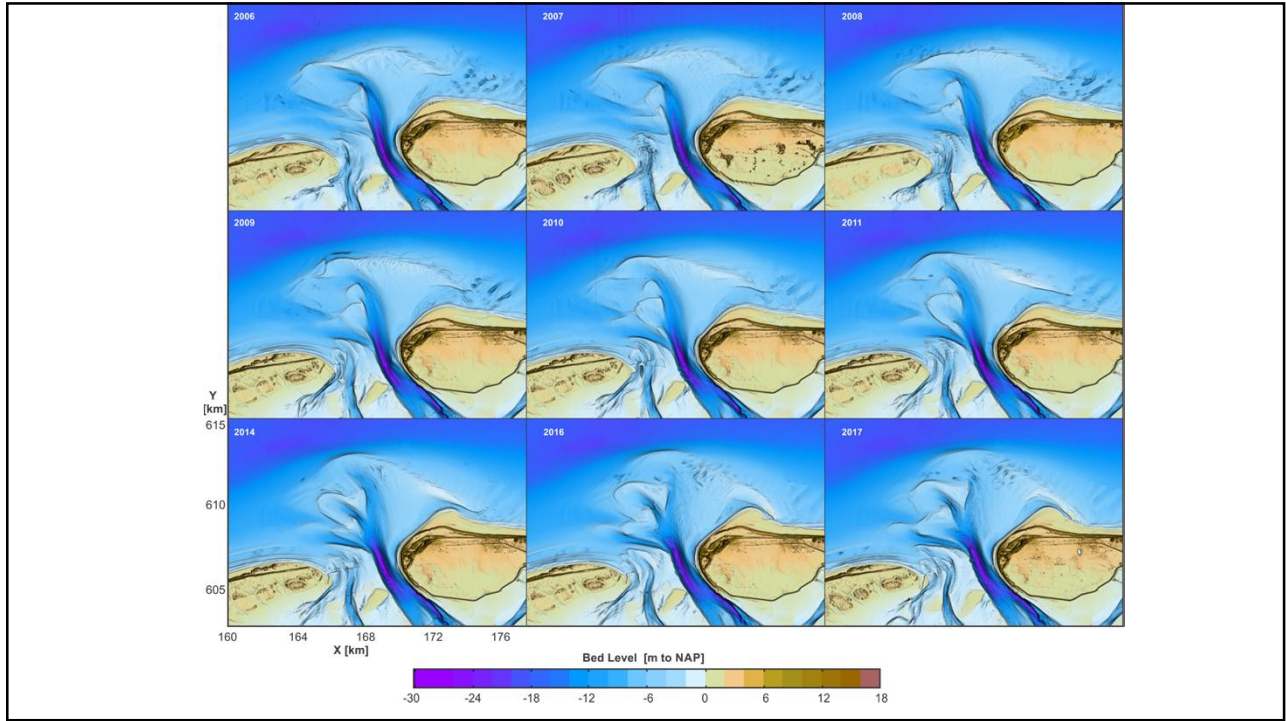


Zeegat van Ameland; Geulen en platen

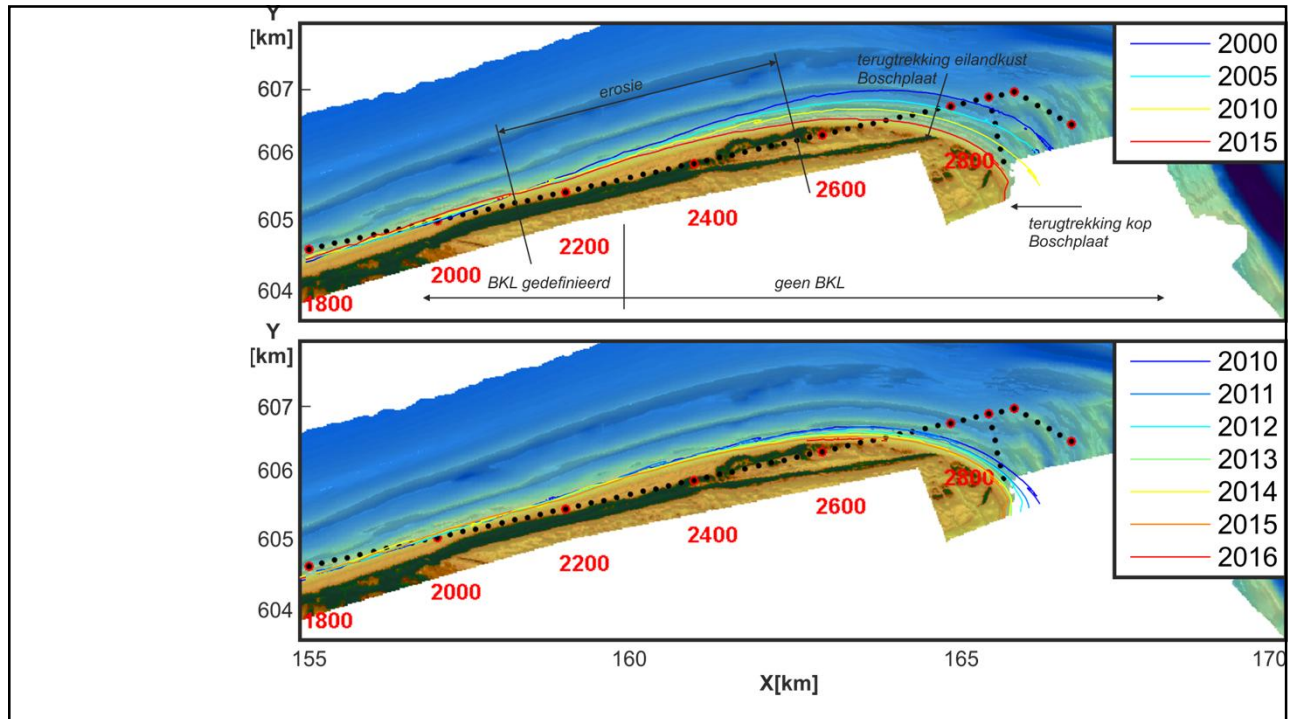
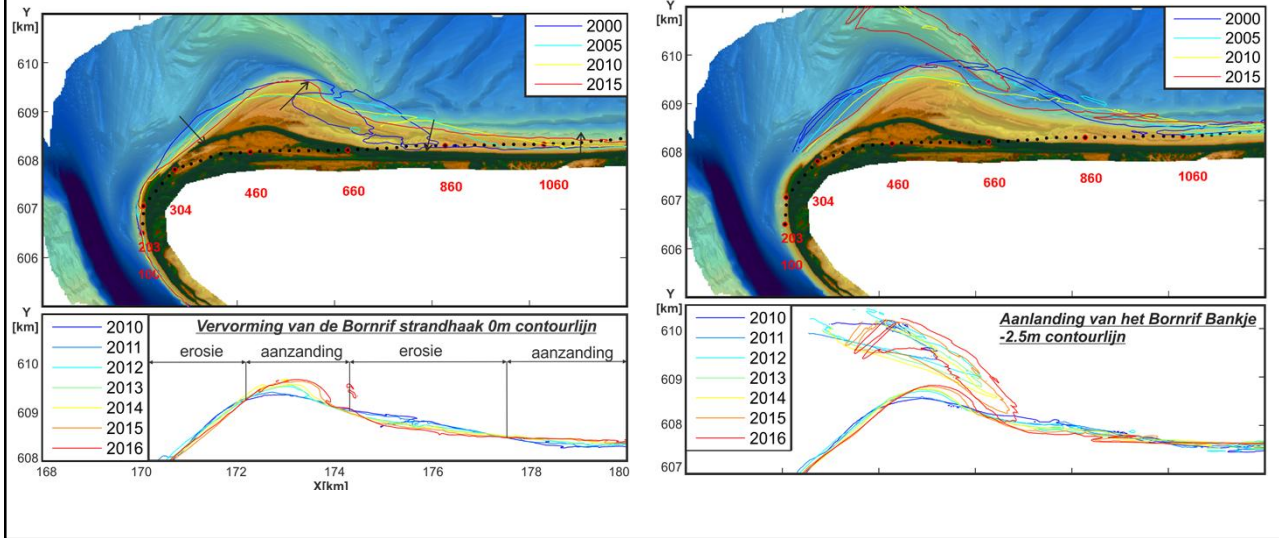


Middellange termijn ontwikkelingen

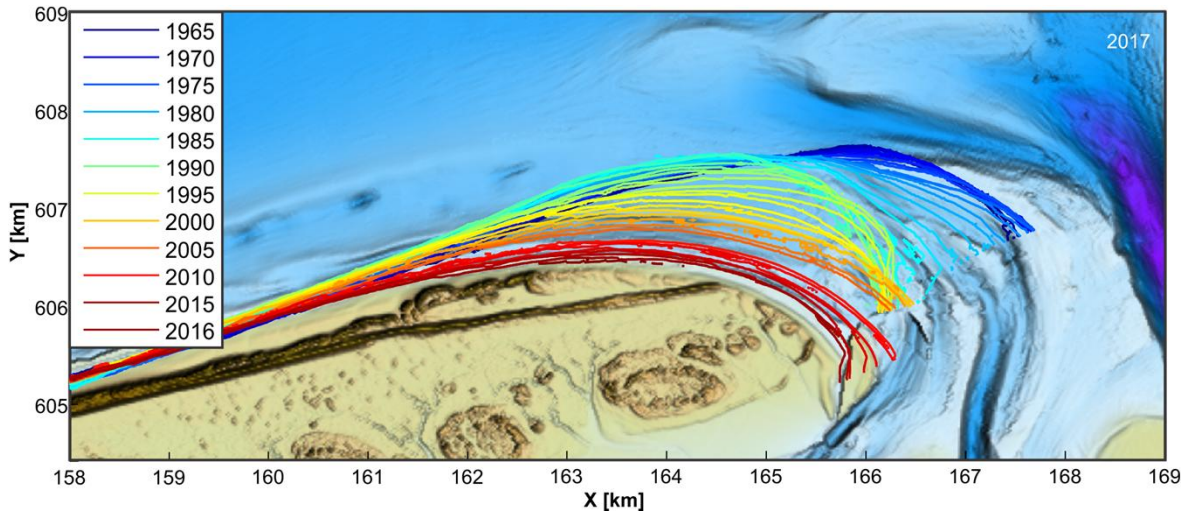




Recente Ontwikkelingen



Boschplaat



Nieuwe Inzichten

