

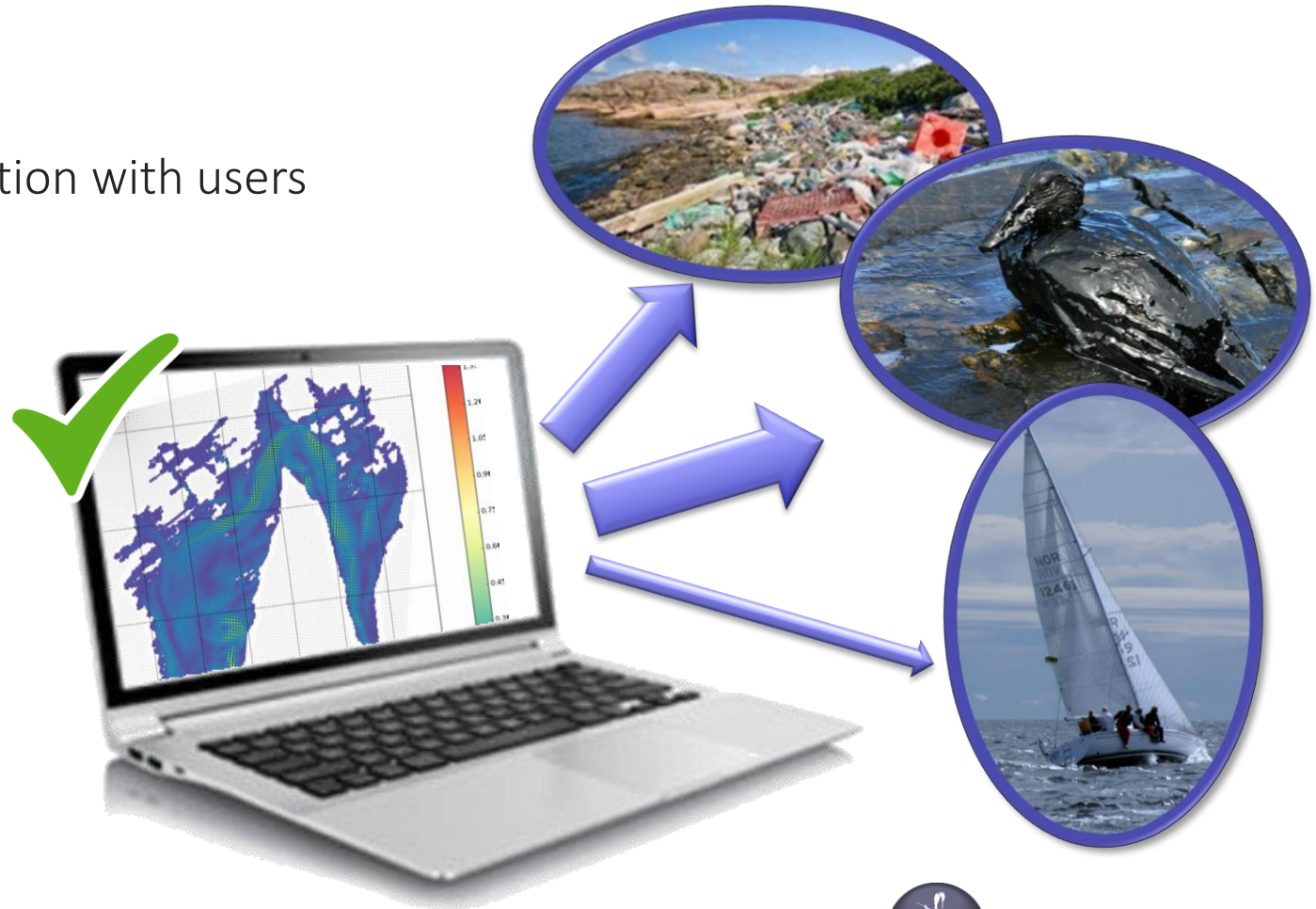
JONSMOD 2018

Applications of the Oslofjord model

Karina Hjelmervik, USN
Nils M. Kristensen, MET

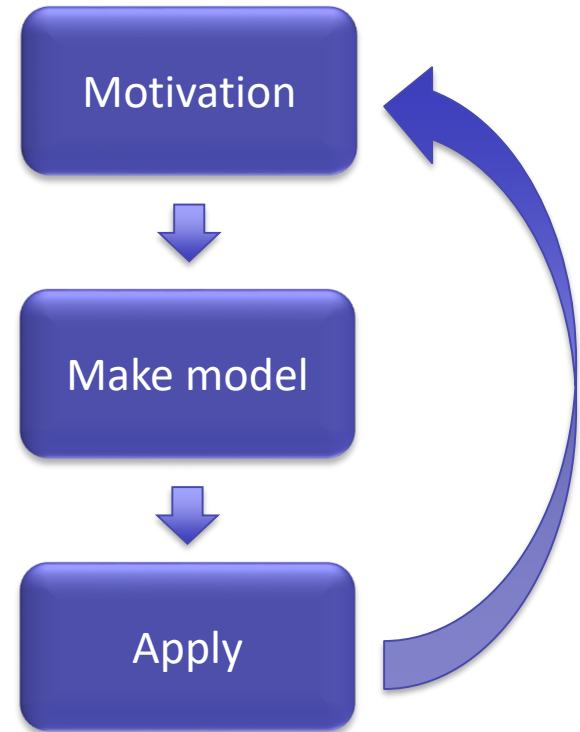
Applications of the Oslofjord model

- Motivation
- Communication with users
- Applications



Our motivation

- Curiosity / research
- Try new techniques
- Hopefully apply it on something useful



Does not imply research funding

Case 1: Planned discharges

Purified sewage / hazardous waste

Possible users:

NOAH, UMB, NIVA

Case 3: Simulator training

Education

Possible users:

USN, Pilot service

Case 5: Vertical profiles

Divers / Sonar operations

Possible users:

FFI, Divers

Case 7: Search and rescue

Man over board

Possible users:

DSB, Rescue company

Case 9: Oil spill

Full City 09/Godafoss 11/ Golden Trader 11

Possible users:

Coastal administration, Exxon

Case 2: Discharge

Sewage / Chlorine

Possible users:

County council, NIVA

Case 4: Ocean forecasting

Safety planning

Possible users:

Ferries, leisure boats

Case 6: Harbour design

Breakwaters / quay

Mulig bruker:

Harbour administration

Case 8: Temperature

Leisure water activities

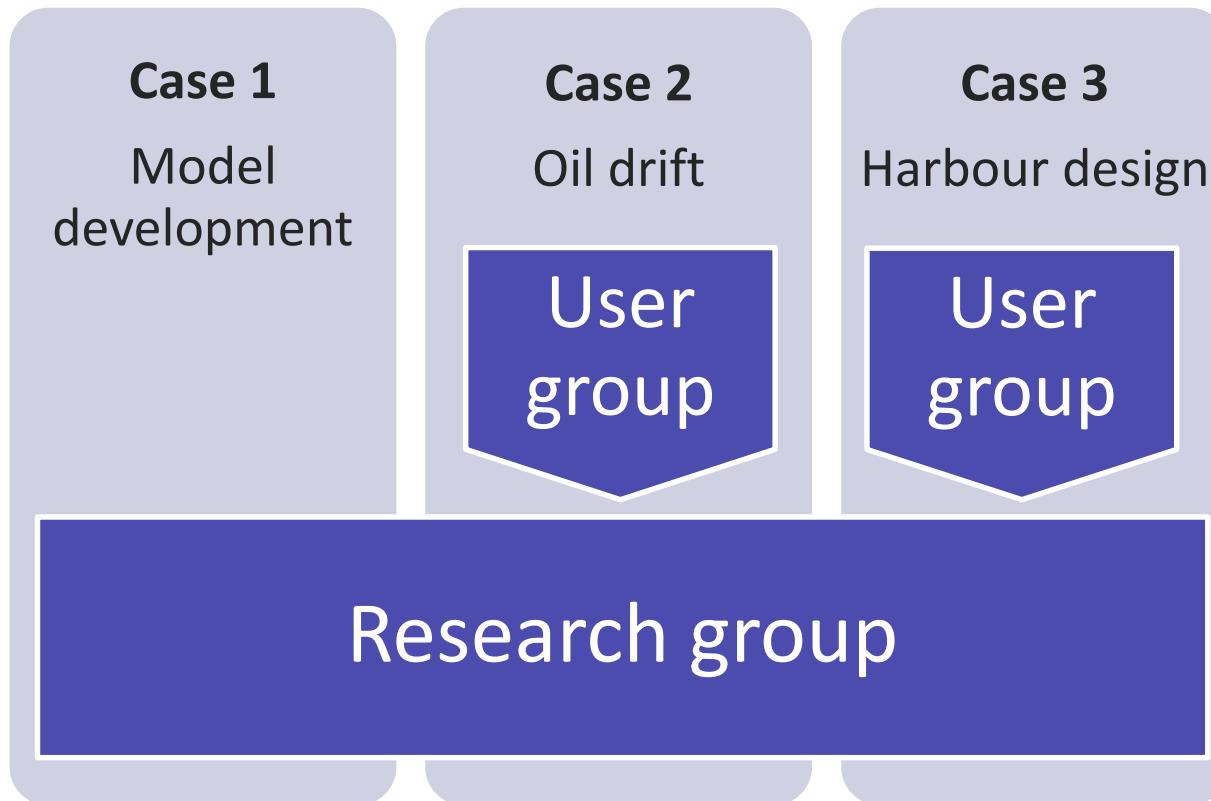
Possible users:

Bathing, city council

Case 10: ???



Project organization



Mimic reality through equations

$$\frac{\partial u}{\partial t} + \vec{v} \cdot \nabla u - fv = -\frac{\partial \phi}{\partial x} - \frac{\partial}{\partial z} \left(u'w' - v \frac{\partial u}{\partial z} \right) + F_u + D_u$$

$$\frac{\partial T}{\partial t} + \vec{v} \cdot \nabla T = -\frac{\partial}{\partial z} \left(T'w' - v_T \frac{\partial T}{\partial z} \right) + F_T + D_T$$

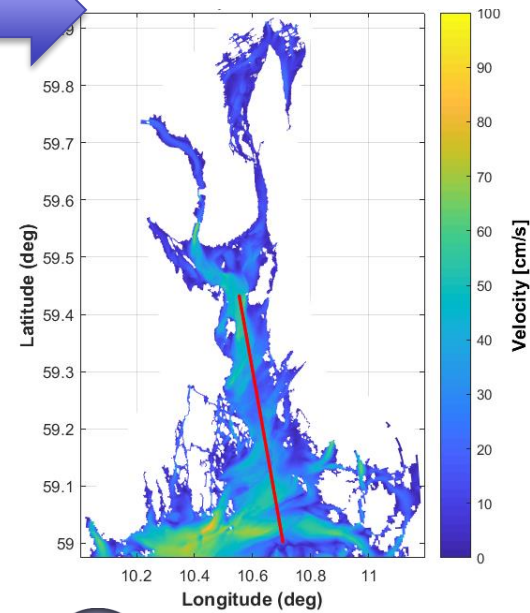
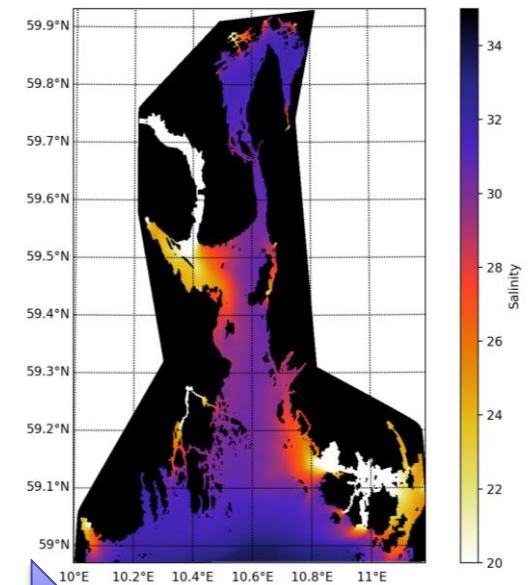
$$\rho = \rho(T, S, P)$$

$$\frac{\partial v}{\partial t} + \vec{v} \cdot \nabla v + fu = -\frac{\partial \phi}{\partial y} - \frac{\partial}{\partial z} \left(v'w' - v \frac{\partial v}{\partial z} \right) + F_v + D_v$$

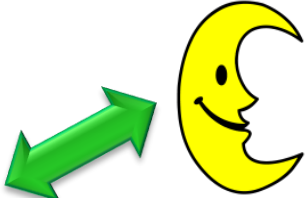
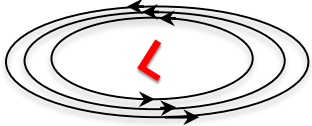
$$\frac{\partial \phi}{\partial z} = -\frac{\rho g}{\rho_0}$$

$$\frac{\partial S}{\partial t} + \vec{v} \cdot \nabla S - \frac{\partial}{\partial z} \left(S'w' - v_S \frac{\partial S}{\partial z} \right) + F_S + D_S$$

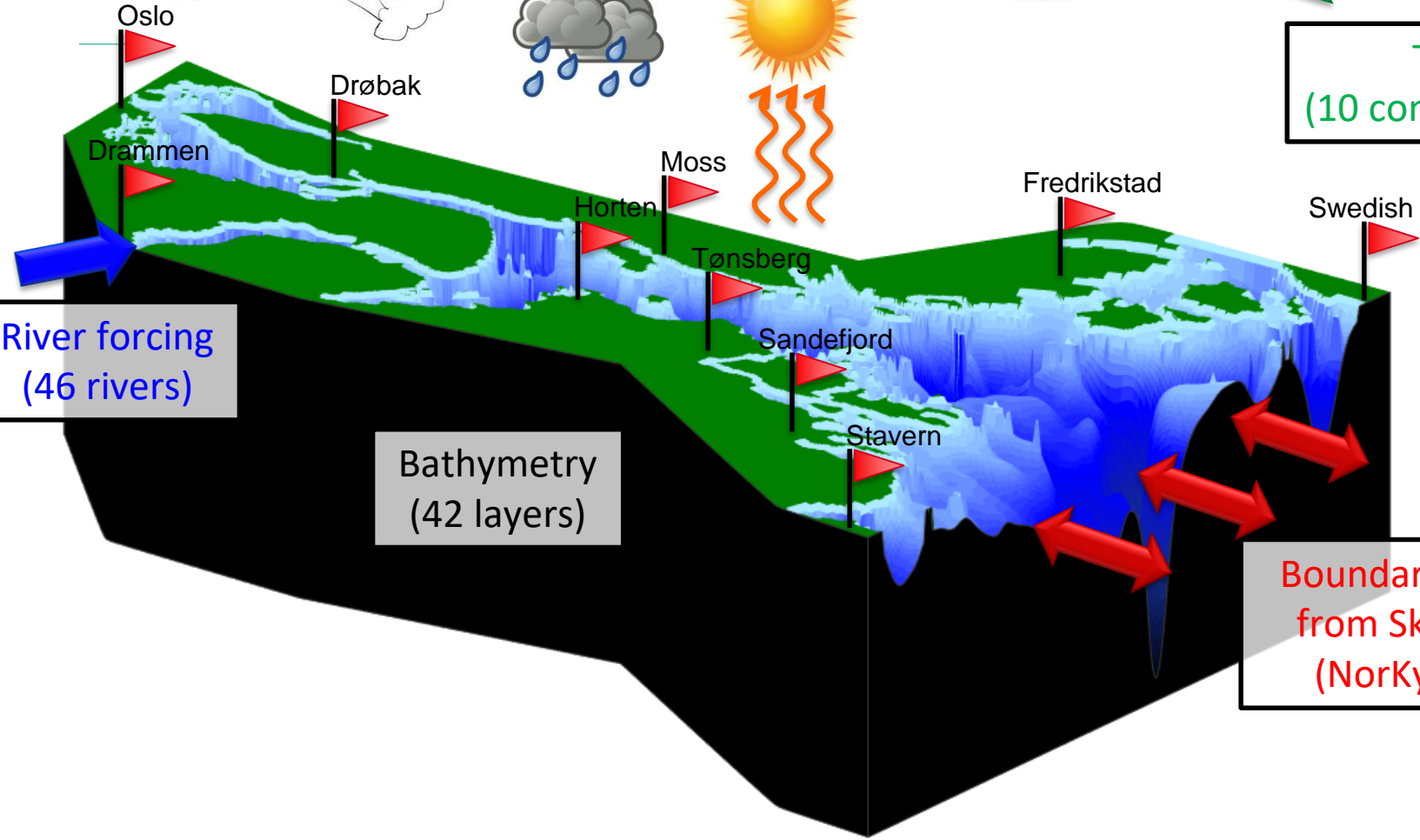
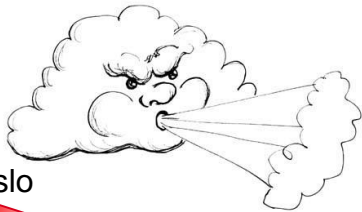
$$\frac{\partial u}{\partial x} + \frac{\partial v}{\partial y} + \frac{\partial w}{\partial z} = 0$$



Atmospheric forcing
(Arome 2.5km)



Tide
(10 components)



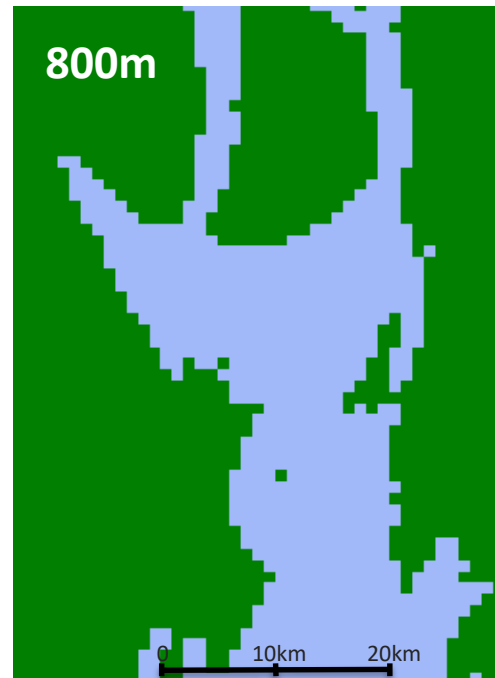
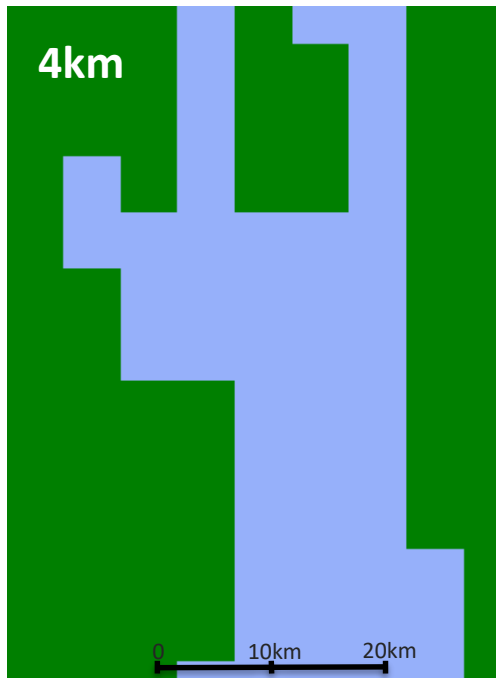
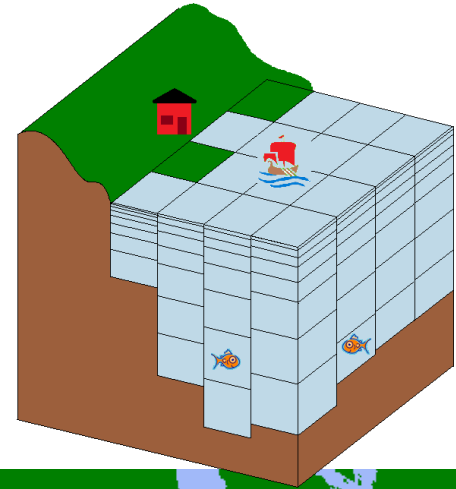
River forcing
(46 rivers)

Bathymetry
(42 layers)

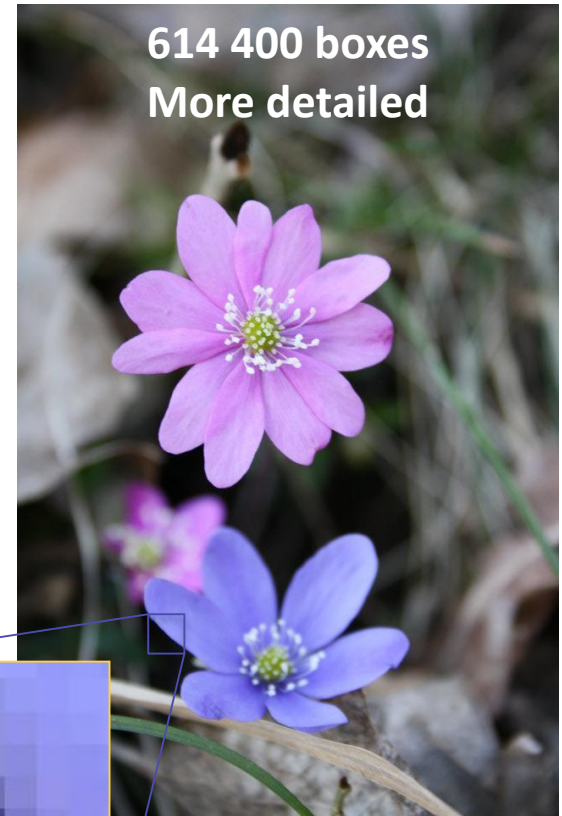
Boundary forcing
from Skagerrak
(NorKyst800)

Resolution

Representative values in each box

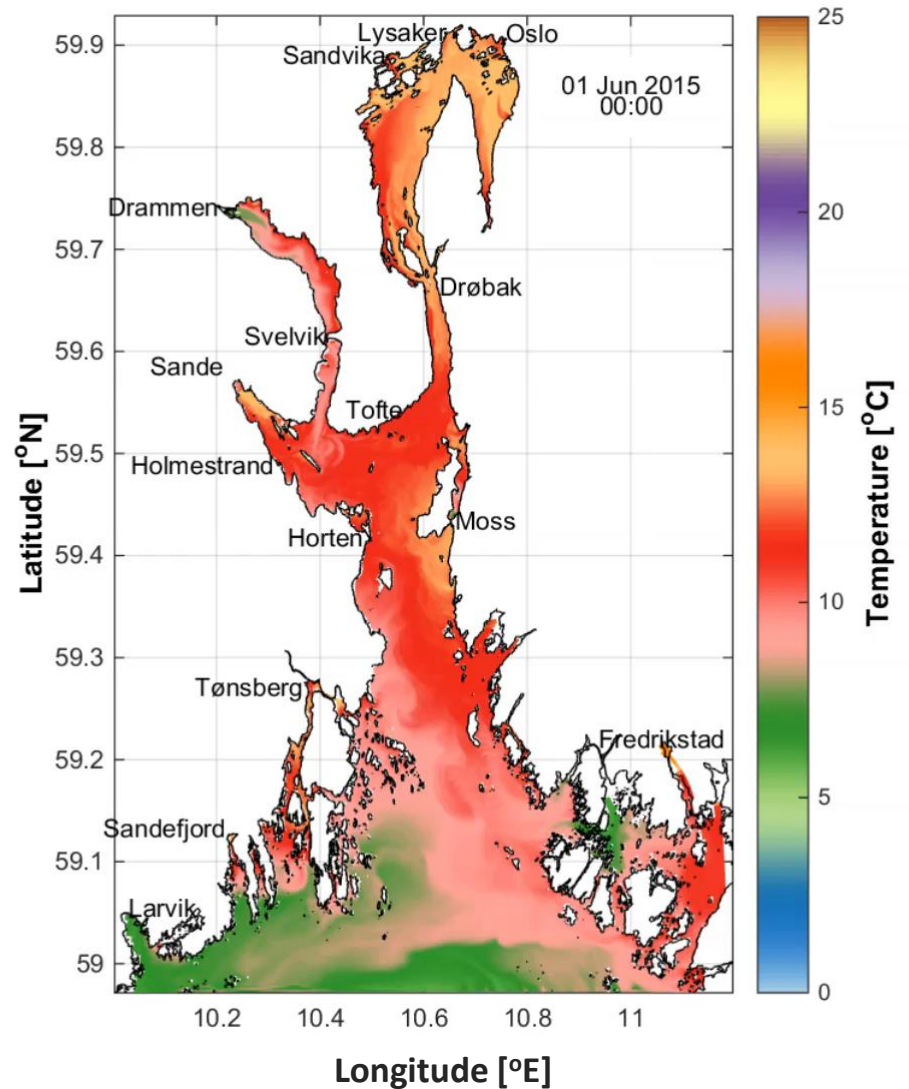


Resolution



Dynamics

- Cold river water
- Cold ocean water
- Daily variations
- Seasonal variations
- Depth variations

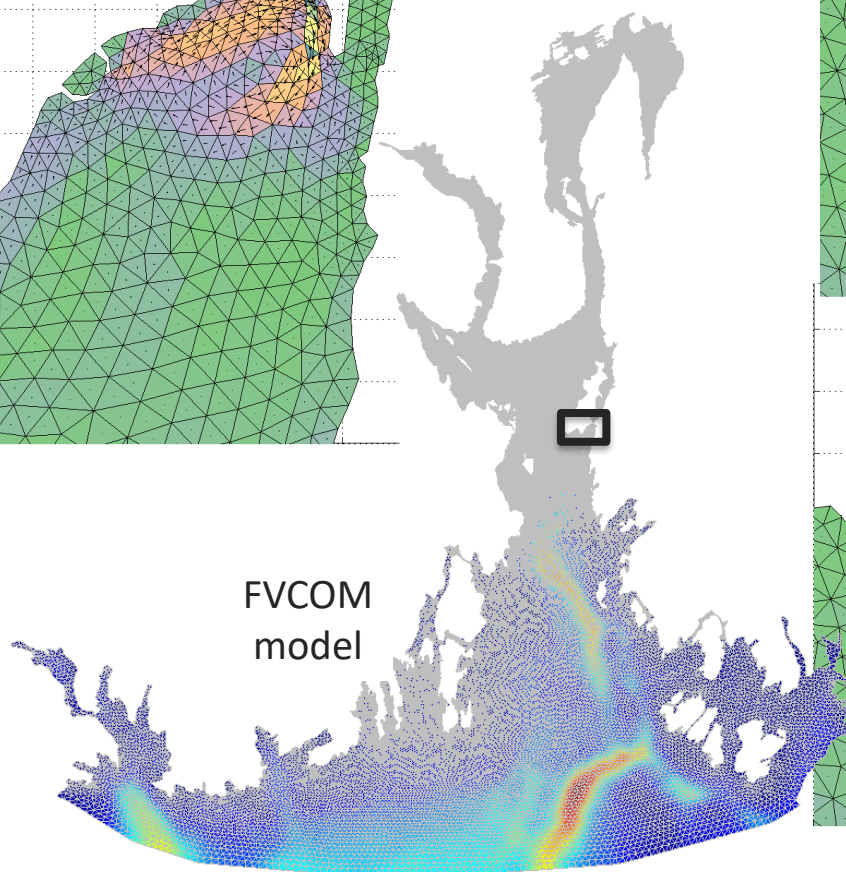
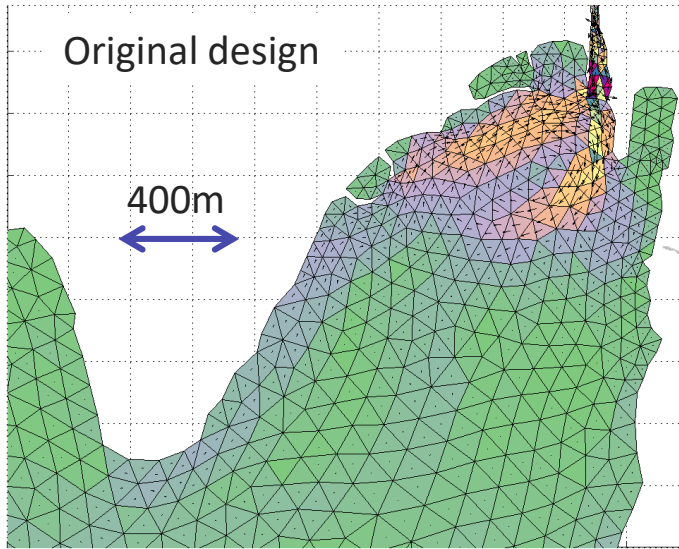


Fear of sediment transport

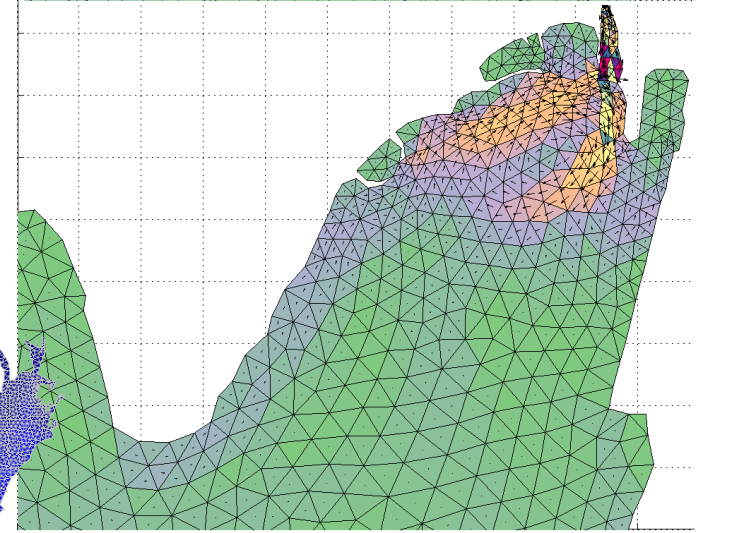
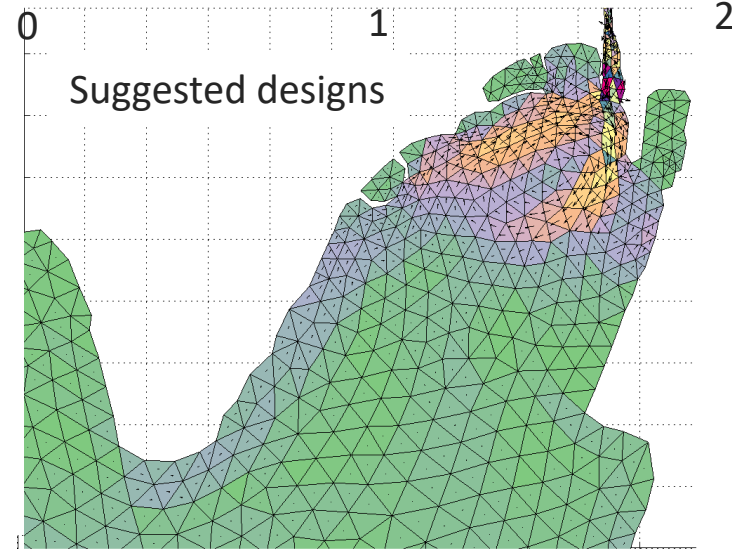
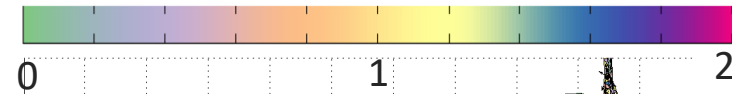
1926



Harbour design



Mean velocity [cm/s]

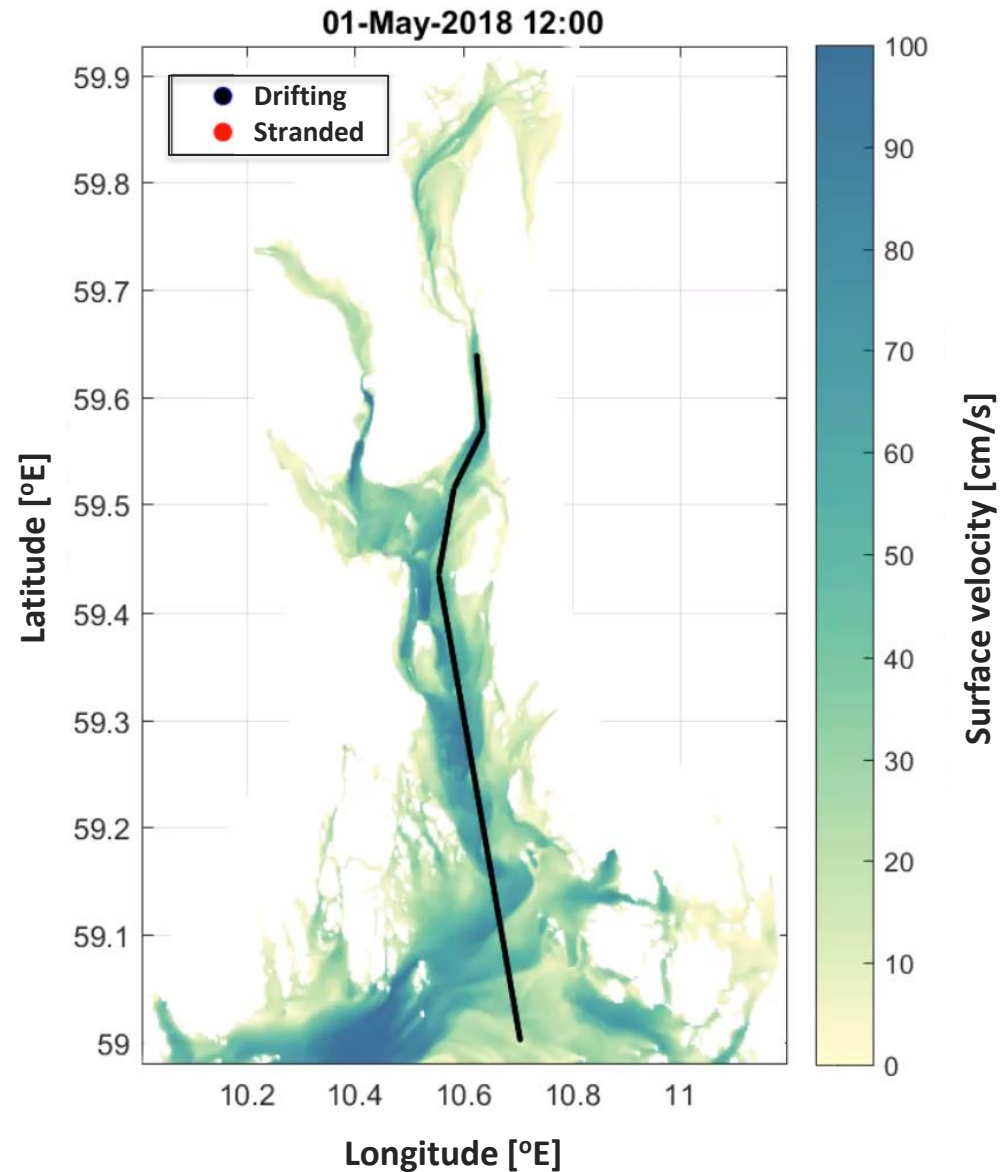


Oil spill accident

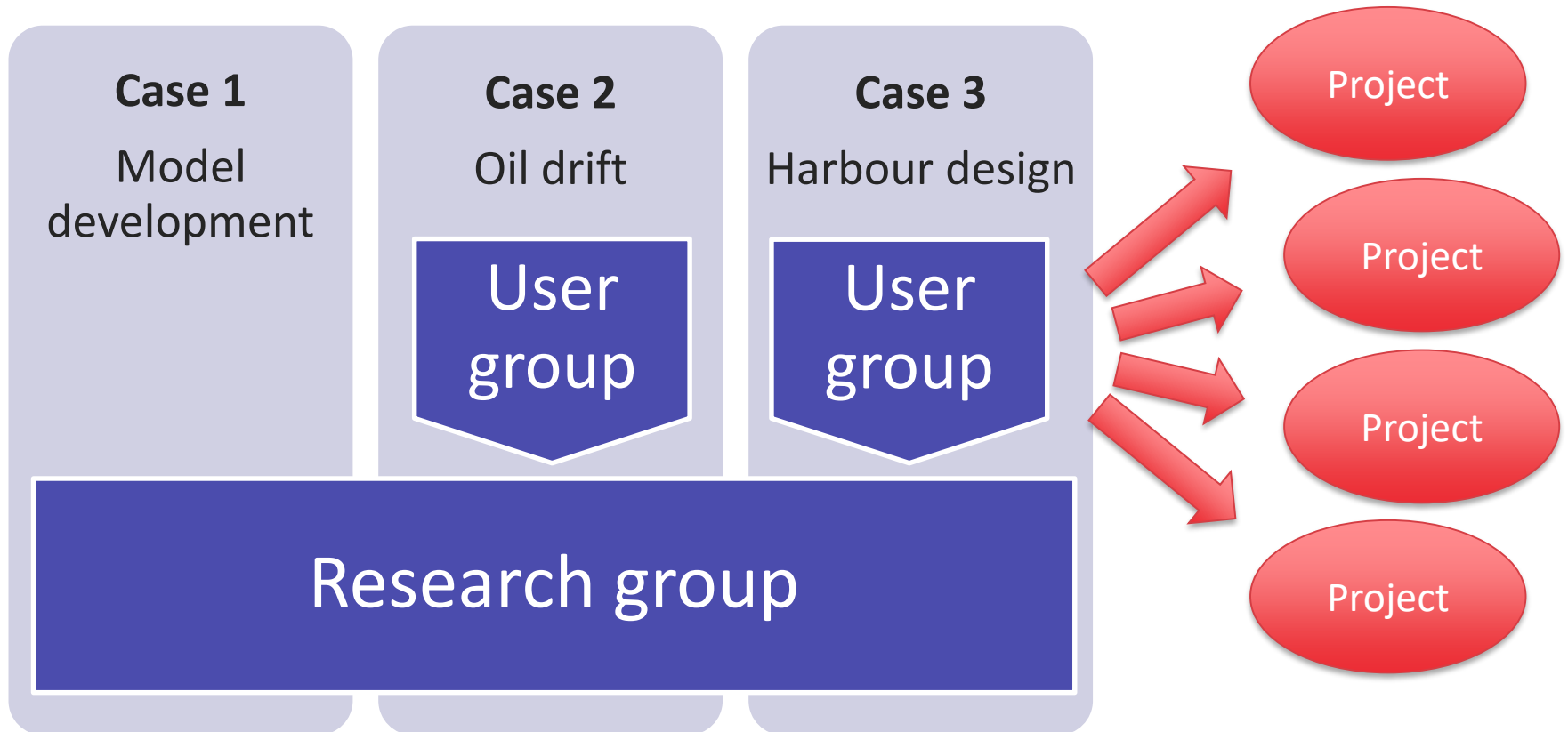


Oil drift

- ROMS
 - Curvilinear grid
- OpenDrift
 - 100 elements in the TSS after 0, 3 and 6 hours

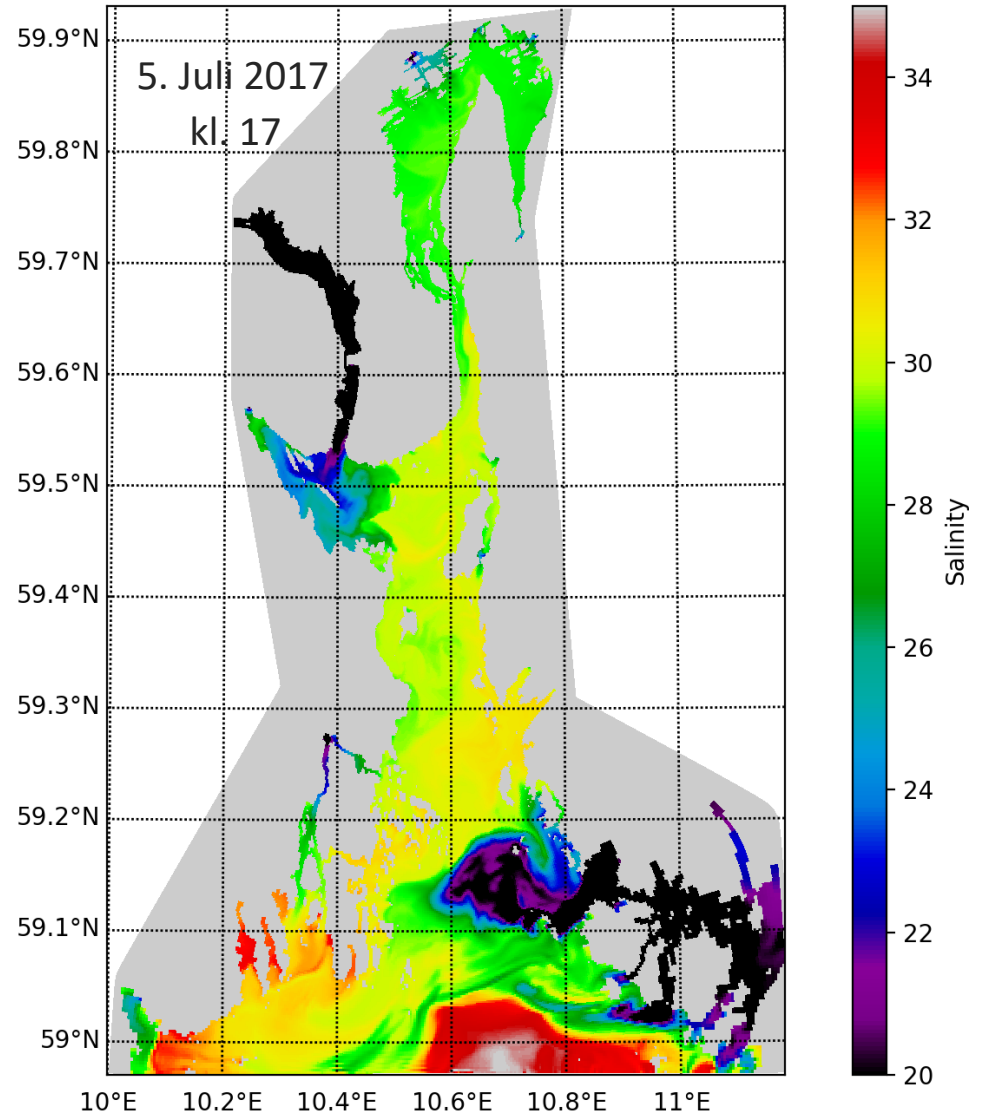


Project organization



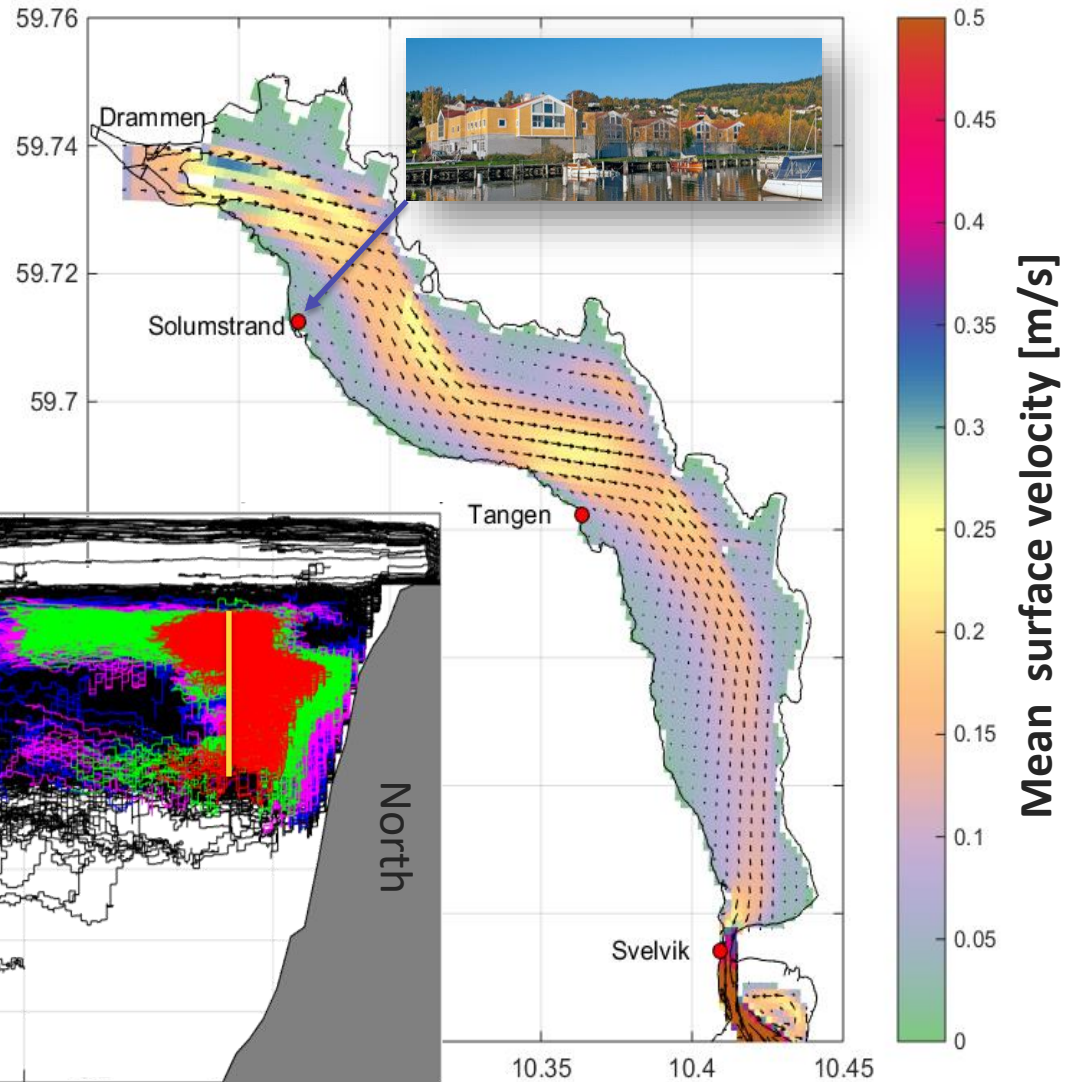
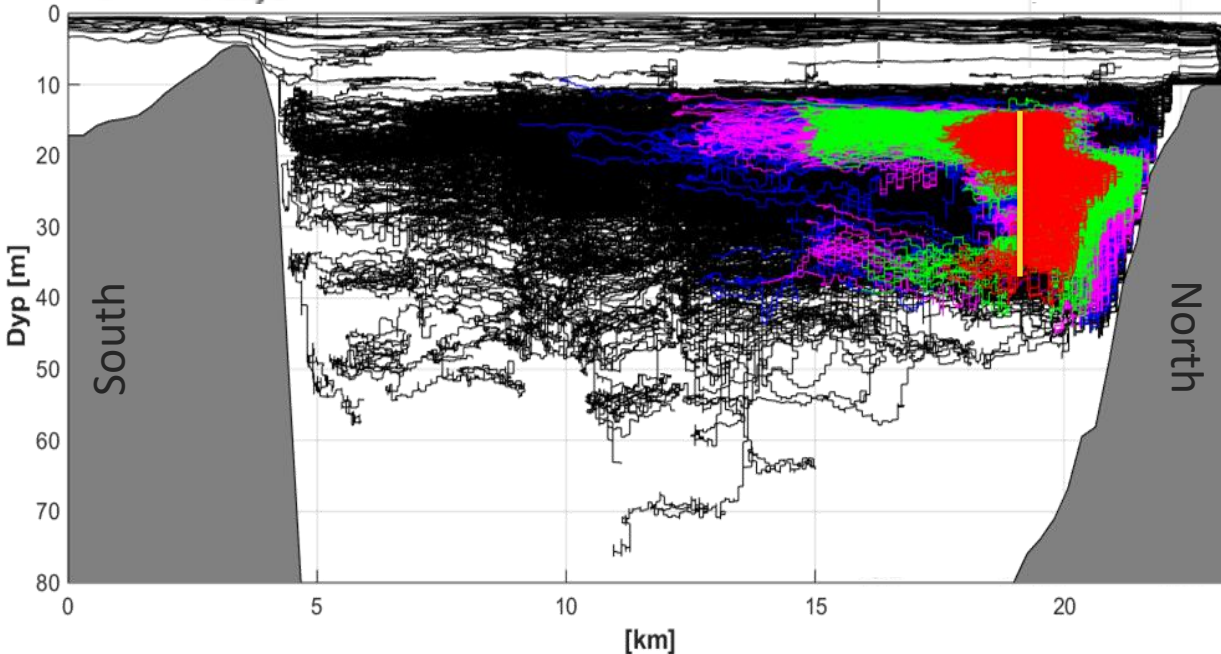
Salmon parasite

- A study on salinity after heavy rainfalls

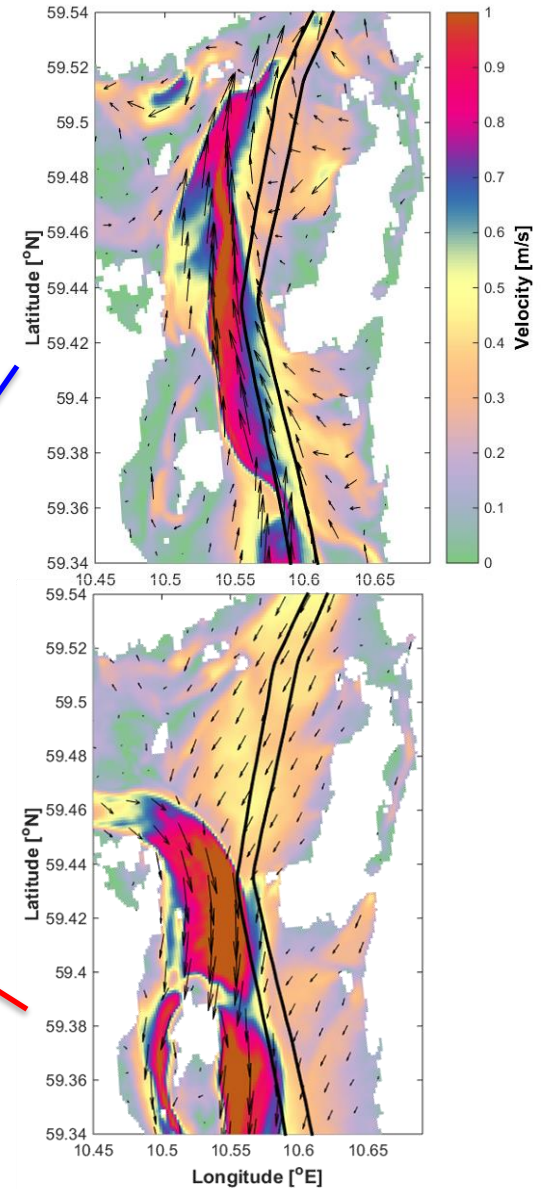
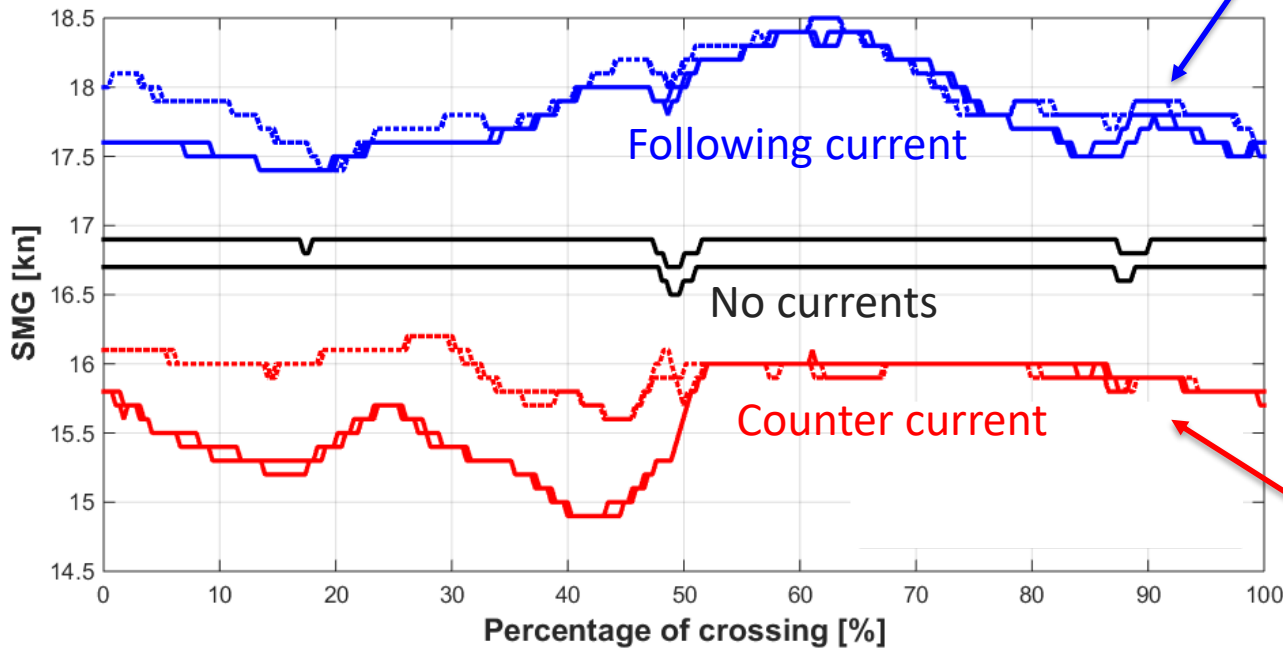


Waste waters

- < 1 day
- < 2 days
- < 3 days
- < 4 days
- > 4 days



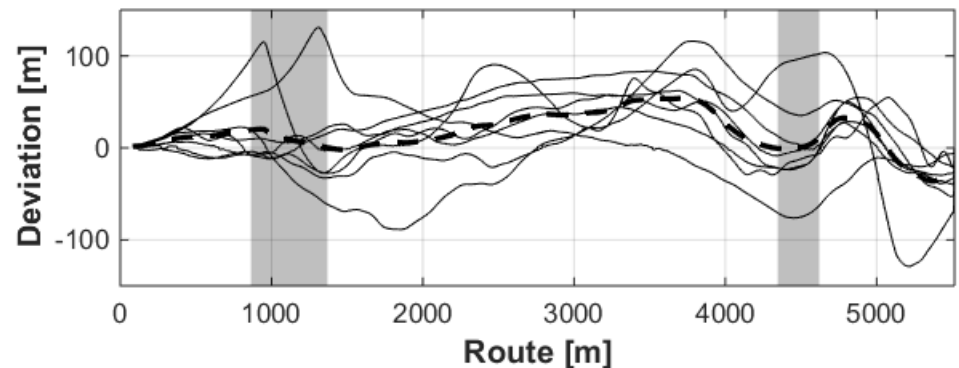
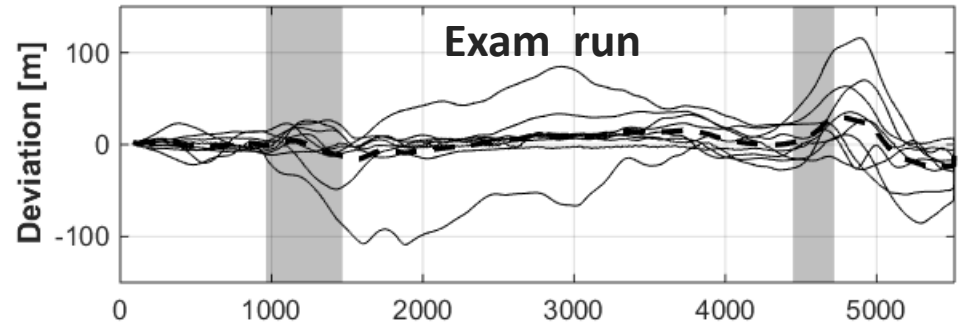
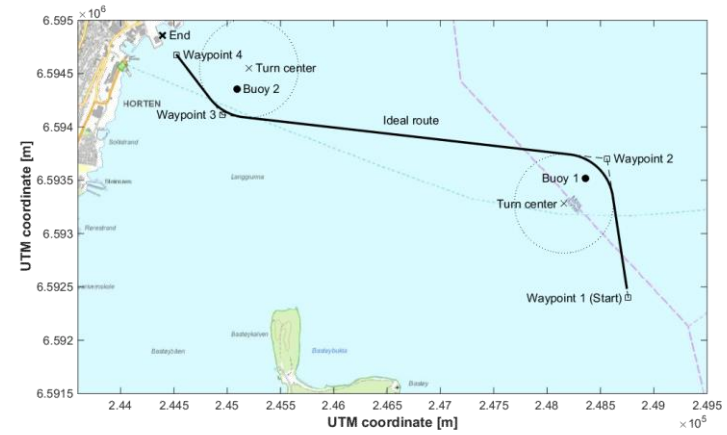
Fuel saving



Simulator training

4 runs + exam

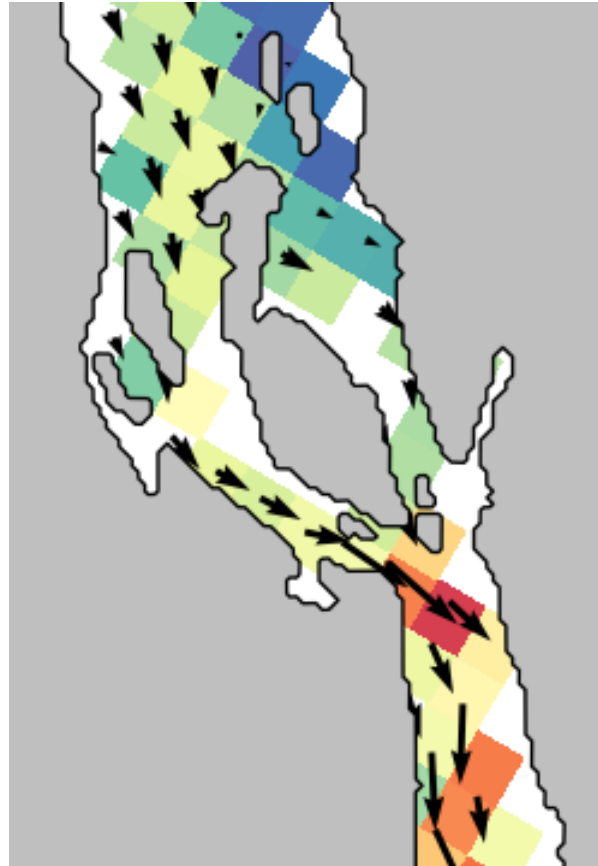
- Control group
 - Trained on homogeneous currents
- Experiment group
 - Trained on realistic currents



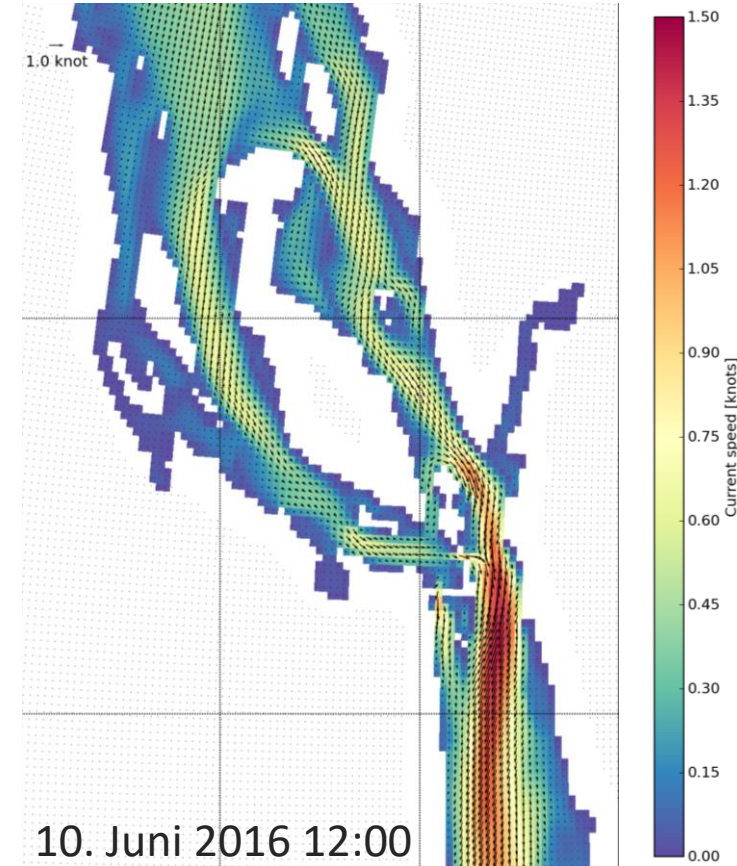
Weather briefing before sailing races



Prior model (NorKyst 800)

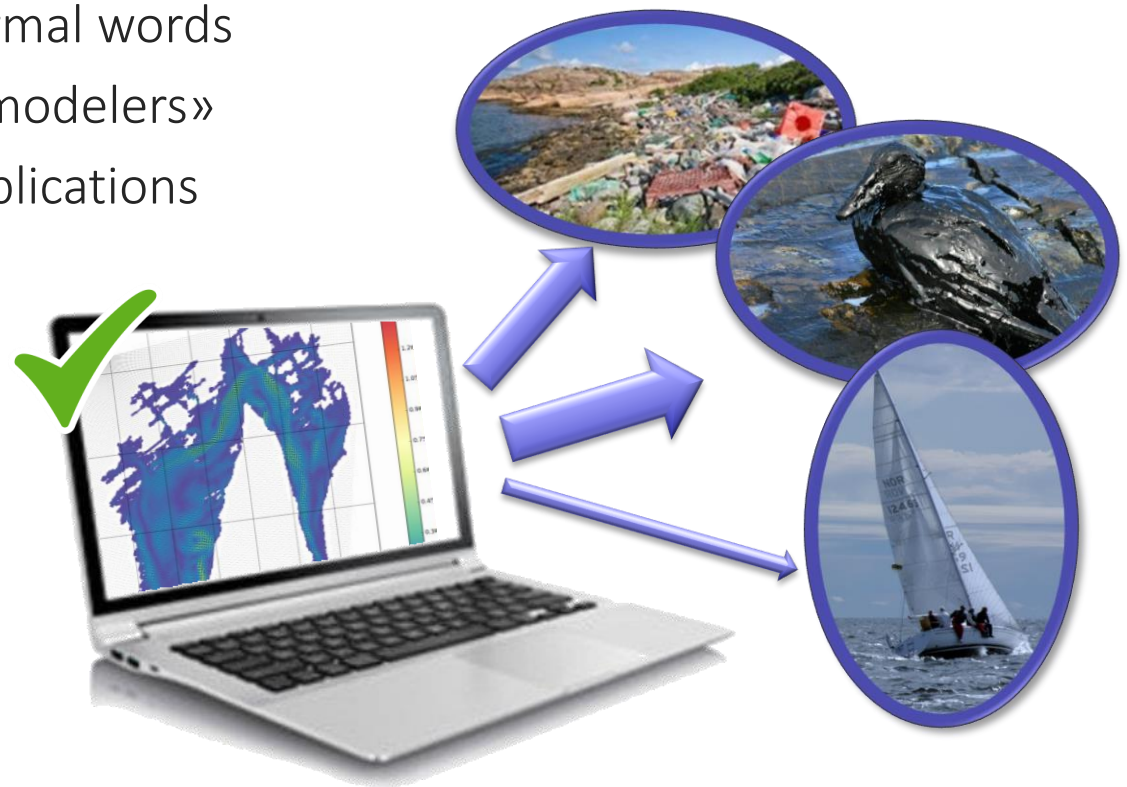


Oslofjord model (FjordOs)



Lessons learned

- Communicate with normal words
- Cooperate with «non-modelers»
- Numerous possible applications



Thank you