



Rijkswaterstaat
*Ministry of Infrastructure
and Water Management*



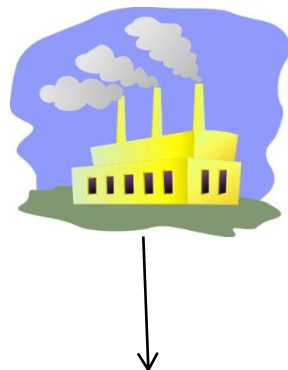
Indirect discharges

Roel Kwanten

12 September 2023



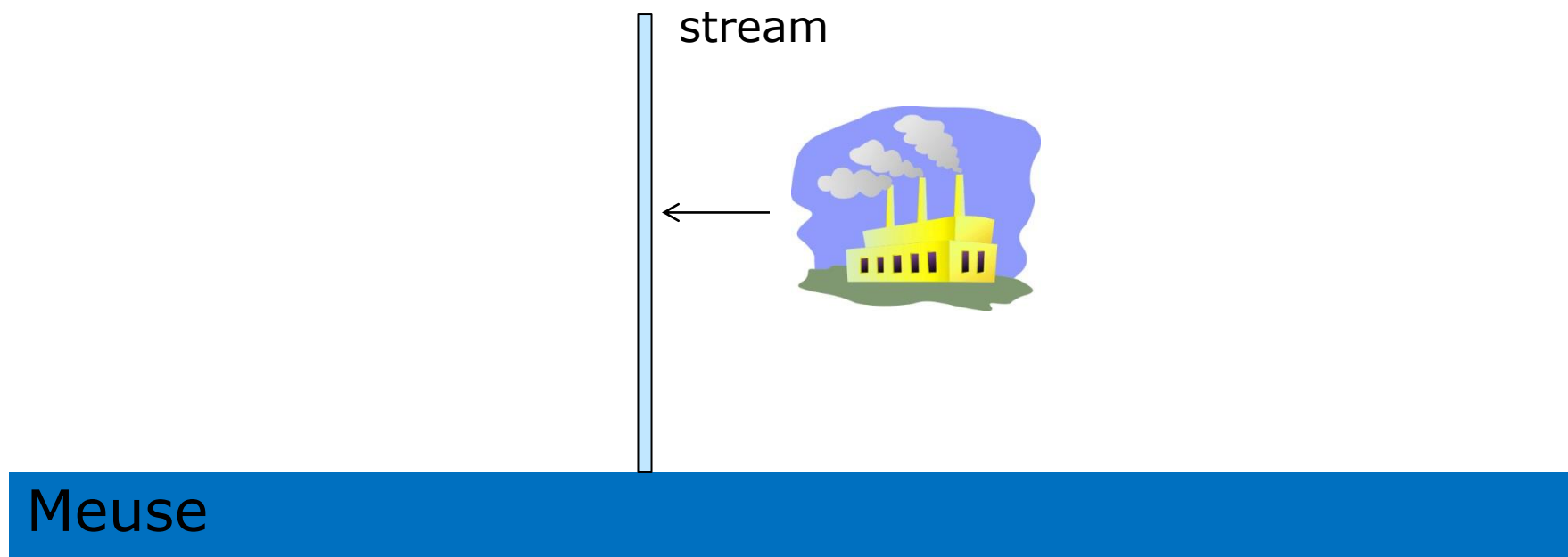
Discharge in main surface water



Meuse

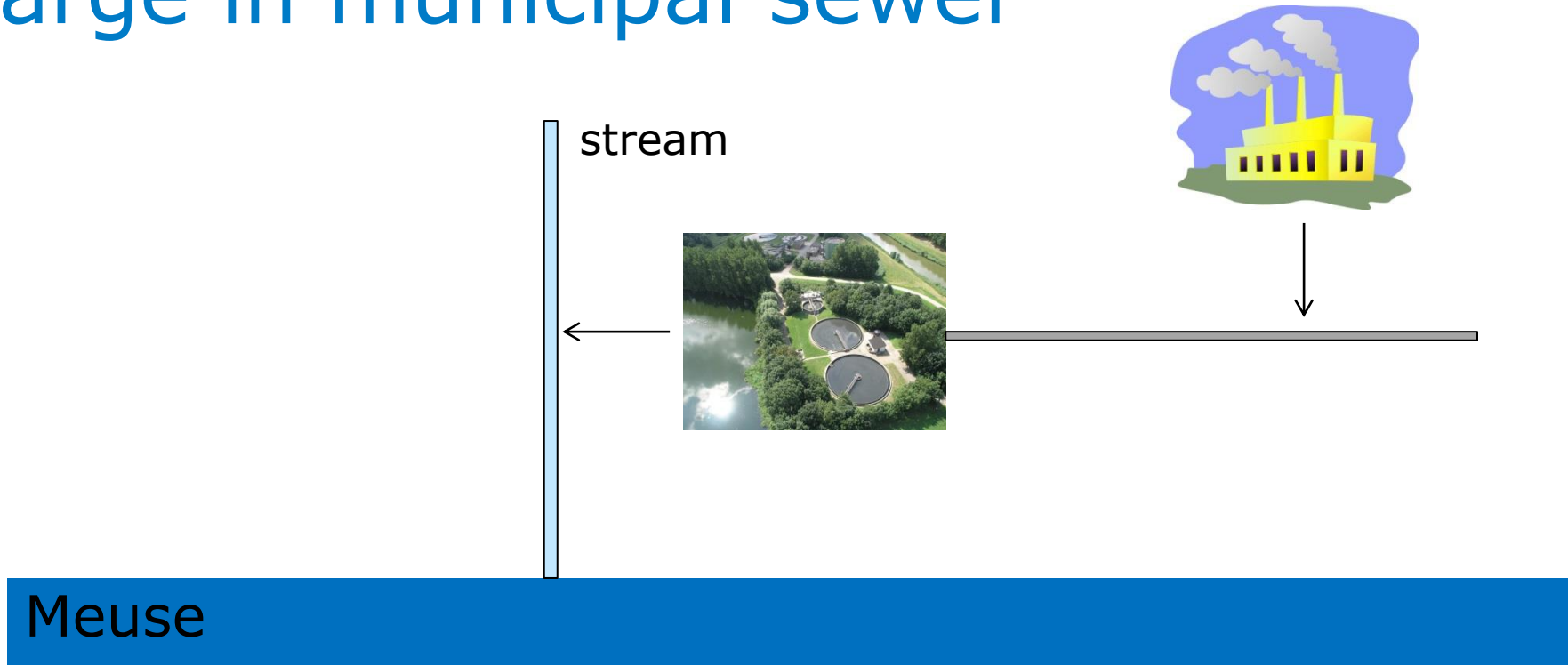


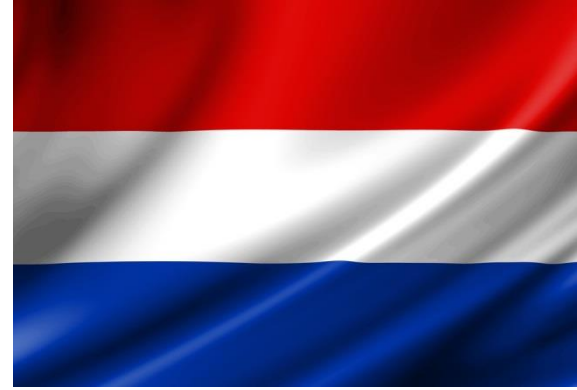
Discharge on regional surface water





Discharge in municipal sewer





Situation in the Netherlands

- Authority for permit: municipality or province
- Advice from waterboard (waterschap) for water issues



Situation in Flanders

- Authority for permit: municipality or province
- Advice from Vlaamse Milieumaatschappij for water issues



Situation in Wallonia

- Authority for permit: département des Permis et Autorisations (DPA)
- Administration for permit: municipality
- Advice from Direction des Eaux de surface for water issues



Situation in Germany





Situation in France





Situation in Luxembourg





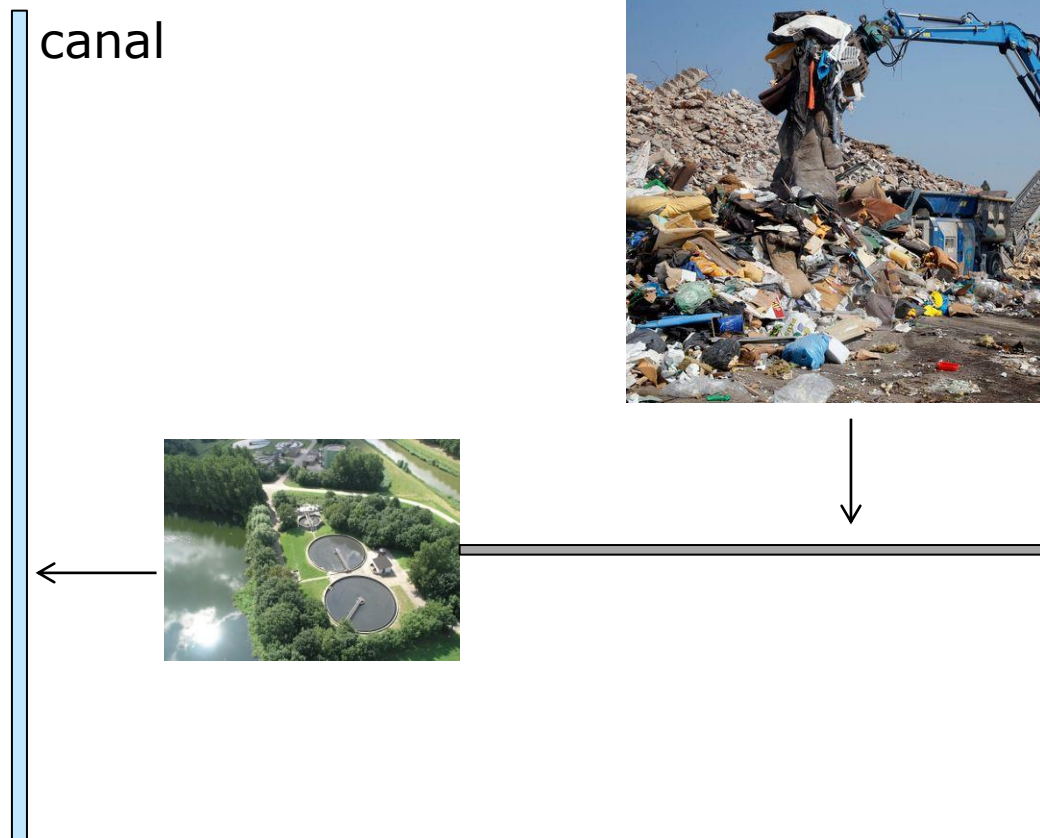
Two examples of indirect discharges

- Indirect discharge at a waste processing plant via municipal wastewater treatment plant (WWTP) on surface water
- Hotspot analysis WWTP



Indirect discharge at a waste processing plant via wastewater treatment plant WWTP on surface water

canal



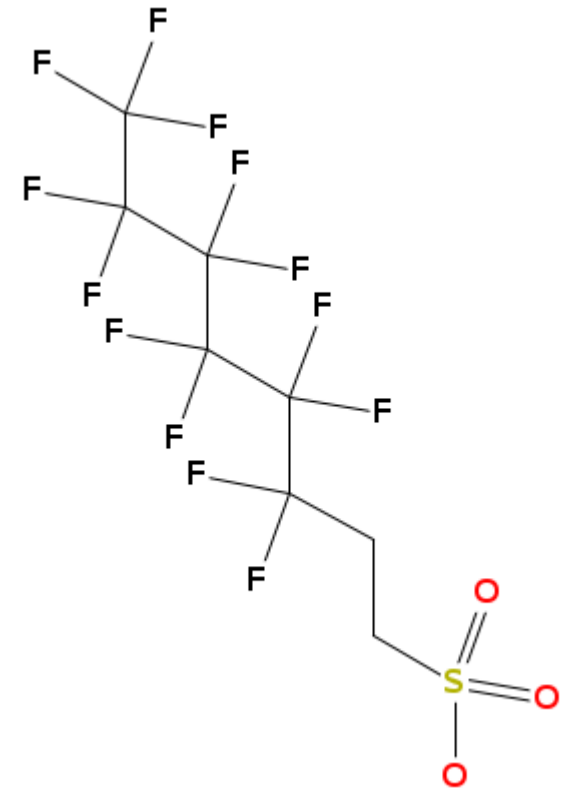
Meuse



PFAS

6:2 FTS

Fire extinguishing foam





Waste processing plant takes measures

granular activated carbon





Hotspot analysis WWTP

Search for specific groups of substances discharged by WWTPs

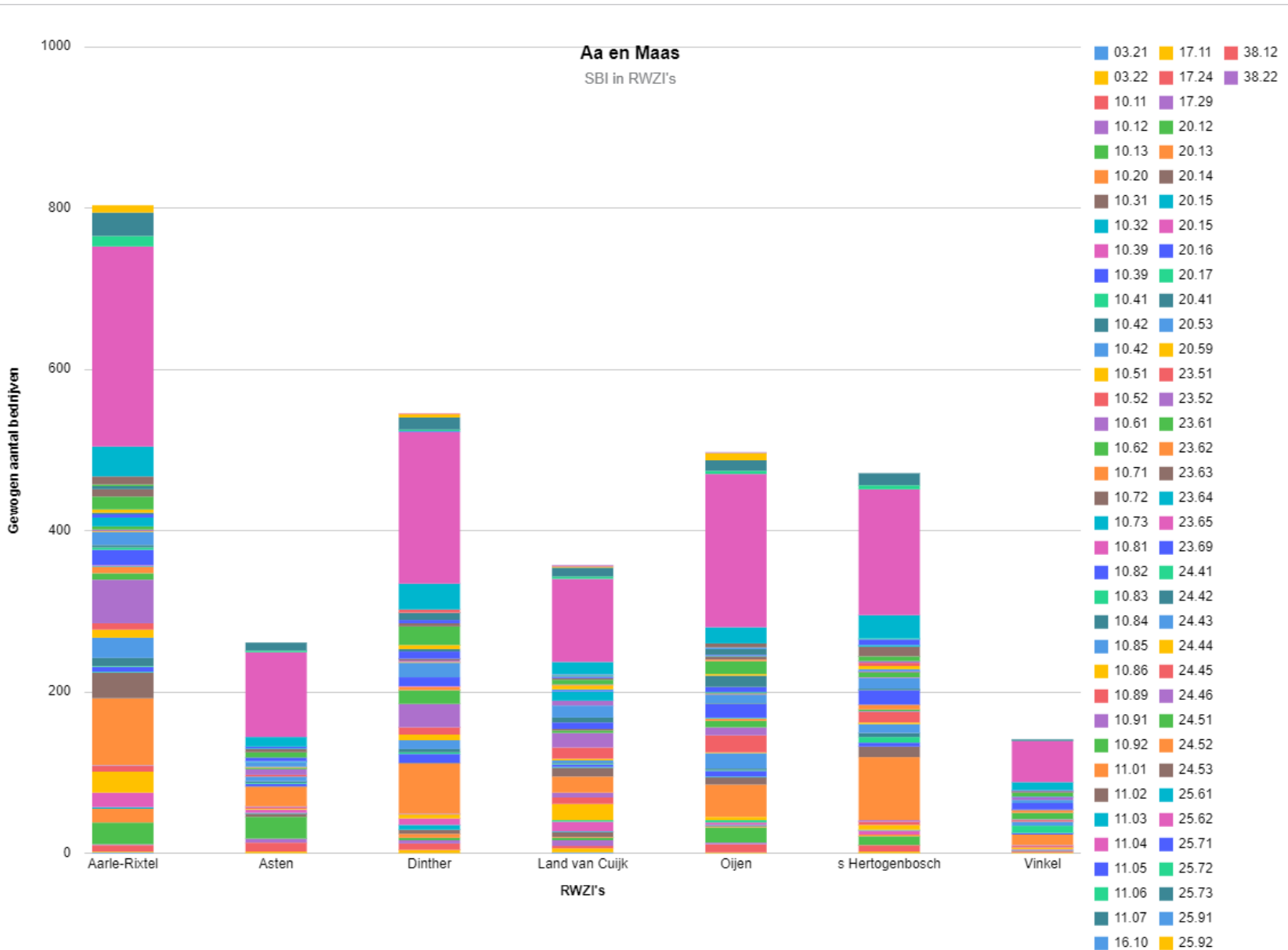
three main questions:

- which substance groups can be expected per business category?
- within which industrial categories and at which WWTP is it expected that the substance groups will be discharged?
- which business categories can be identified?



SBI code

- SBI = standaard bedrijfsindeling (standard business category)



Most frequently found business categories:

- Metal processing industry 34%
- Bakery and bakery goods 10%
- Surface treatment metal 5%



Metalworking

Discharges of this category:

- Chrome (VI)
- Phenol
- Dyes
- Mercury
- Fibres
- Polycyclic aromatic hydrocarbons

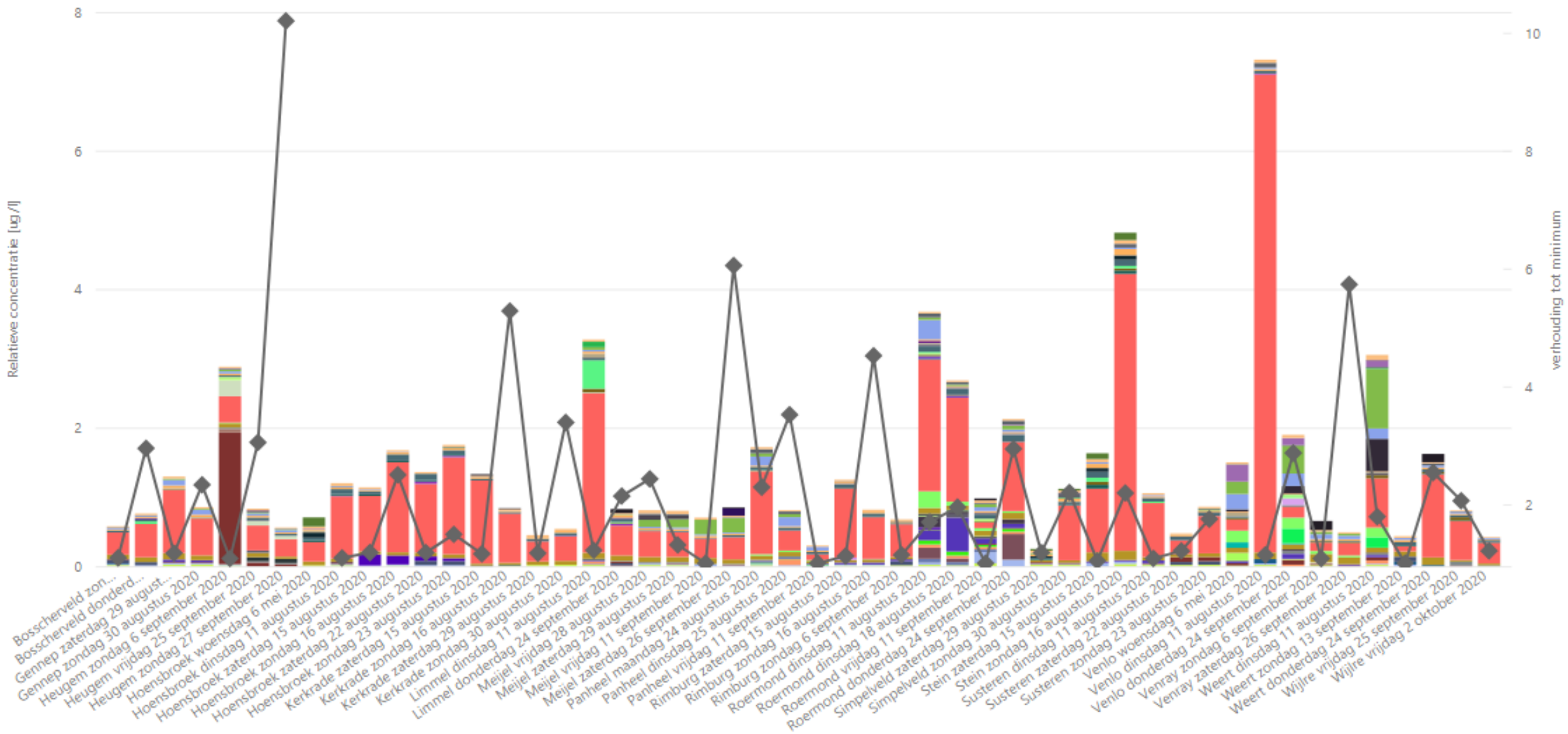


pesticides



Rel. concentratie voor geselecteerde componenten

Scr_Componentnaam ◀ ● Carbofuran ● Carboxin ● Chloridazone ● Chlorprop... ● Climbazole ● Clothiandin ● Cyantranili... ● Cyazofamid ● Cycluron ● Cyprodinil ● Cyromazine ● DEET (Diet... ● Diazinon ● Dichlorobe... ▶



Aantal samples

Aantal unieke componenten

Componentnaam

49

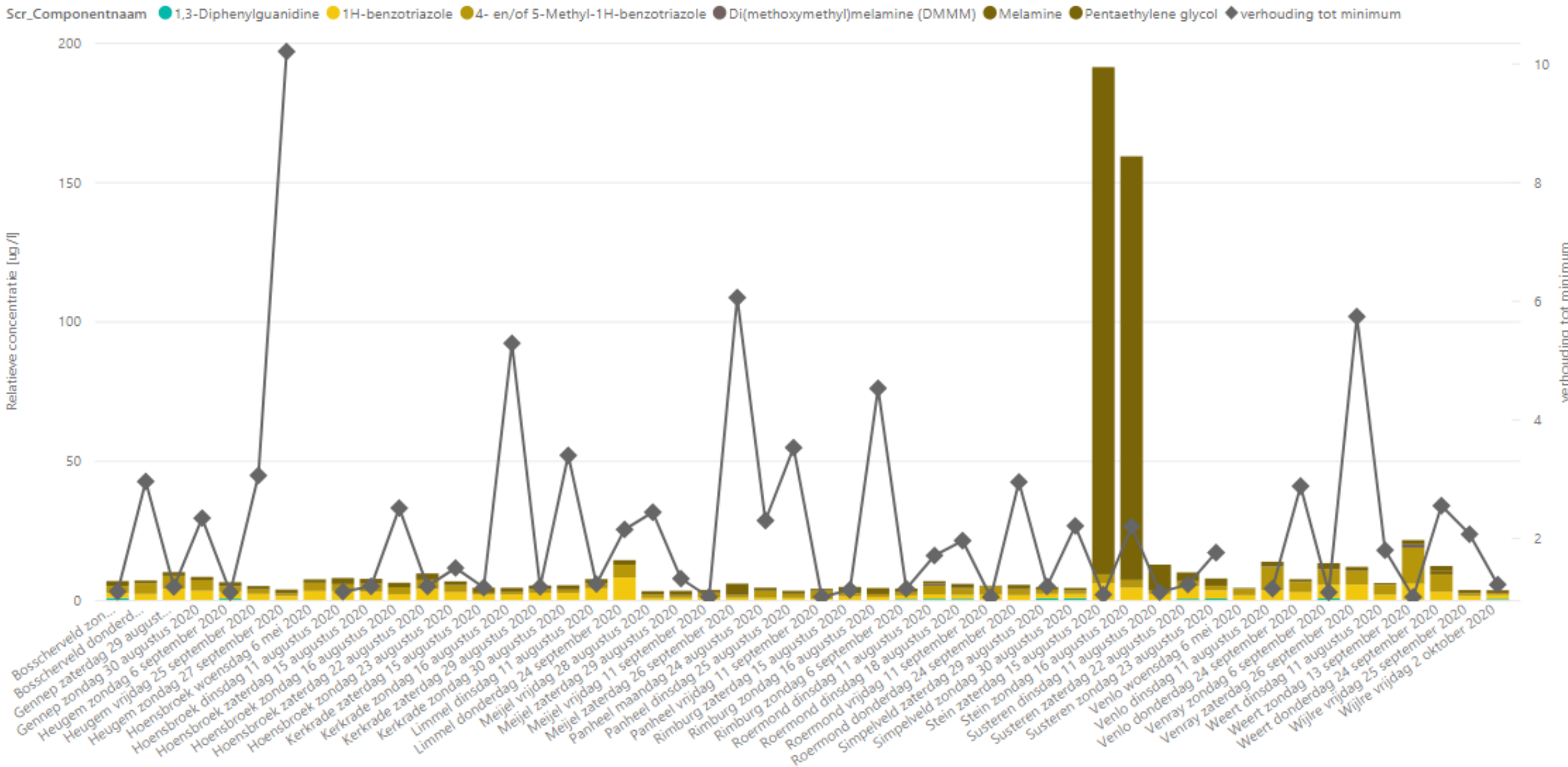
1

DEET (Diethyltoluamide)

Bibliotheek ● PEST ◆ verhouding tot minimum



Rel. concentratie voor geselecteerde componenten



LOZINGEN ZEER ZORGWEEKKENDE STOFFEN & OPKOMENDE STOFFEN

