

A carbon system model for the Barents sea

- Model description and preliminary results

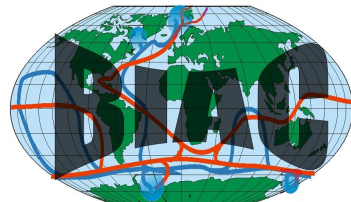
Marius Årthun, R. Bellerby,

C. Schrum, L.H. Smedsrud

JONSMOD 12. May 2010



UNIVERSITY OF BERGEN
GEOPHYSICAL INSTITUTE



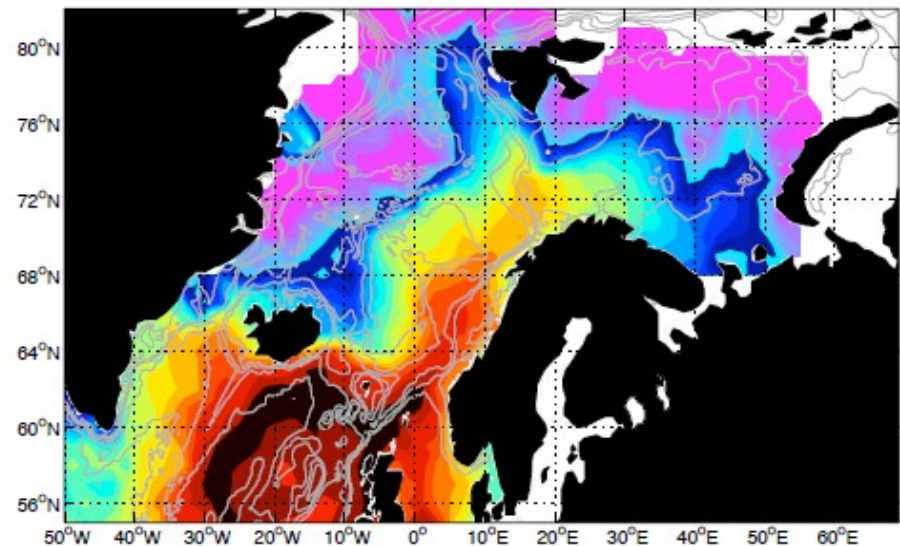
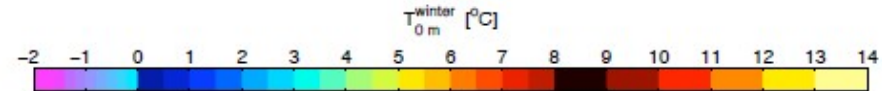
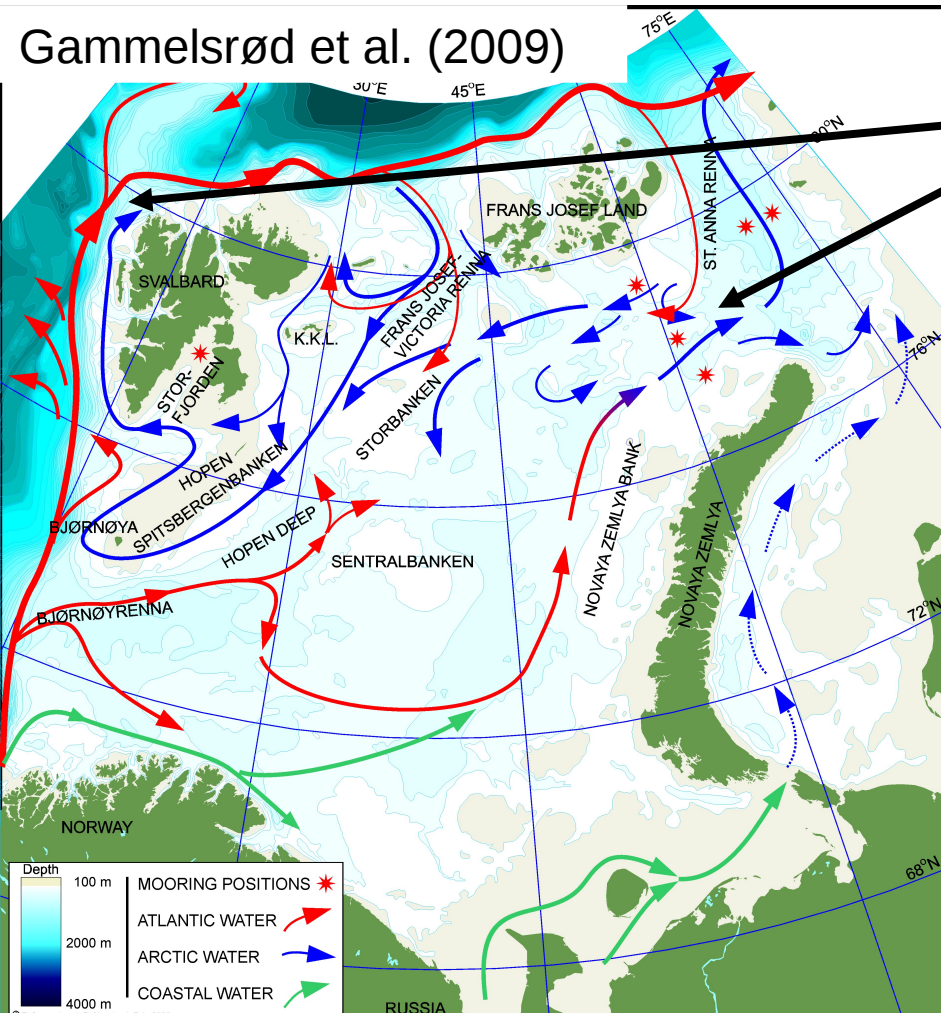
Bjerknes Centre
for Climate Research



The Barents Sea

Two main branches of AW inflow to the Arctic: Fram Strait and Barents Sea

- Large heat loss
- Seasonal ice cover



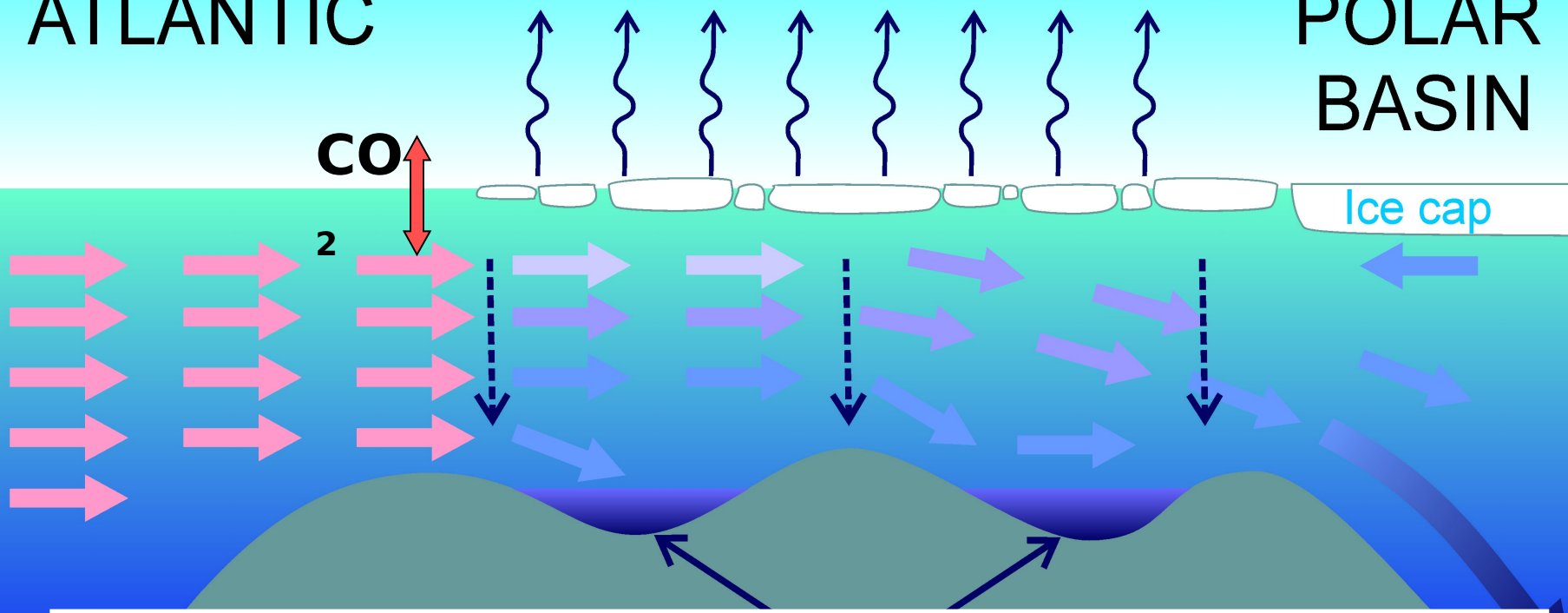
COOLING

ATLANTIC

POLAR BASIN

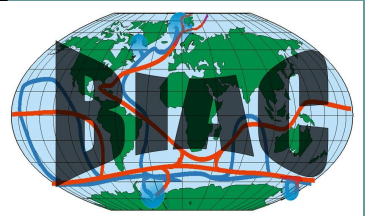
CO₂

Ice cap



Northern North Atlantic considered to be an important sink region for CO₂ due to large heat loss and convective processes

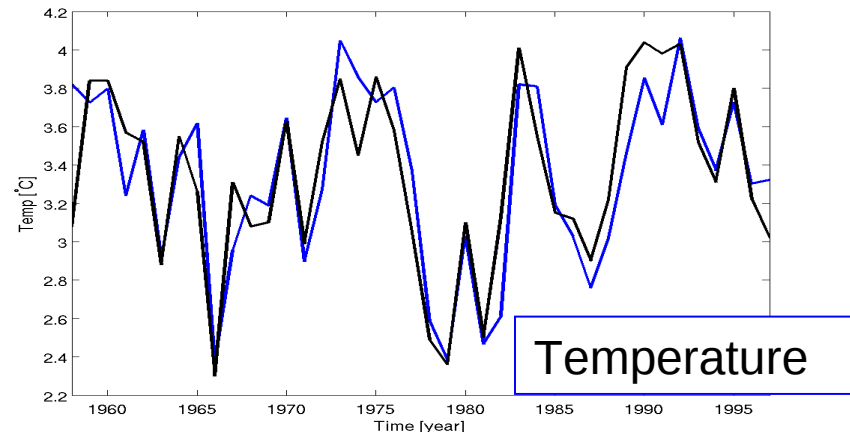
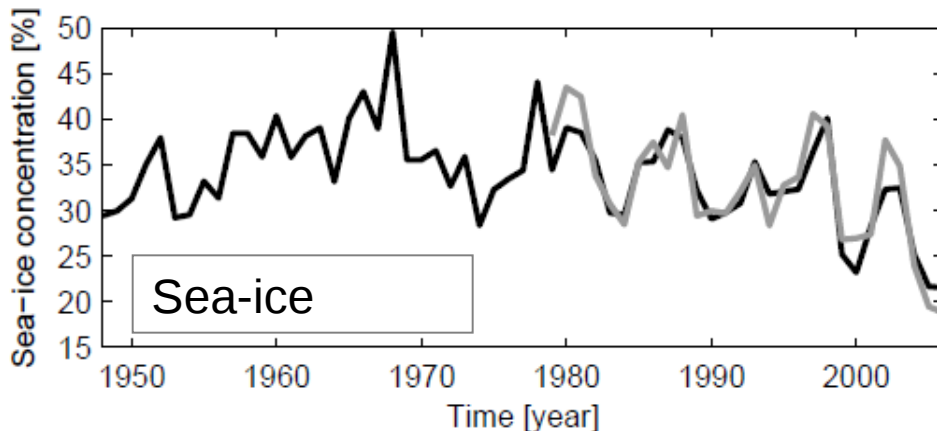
BARENTS SEA FLOOR



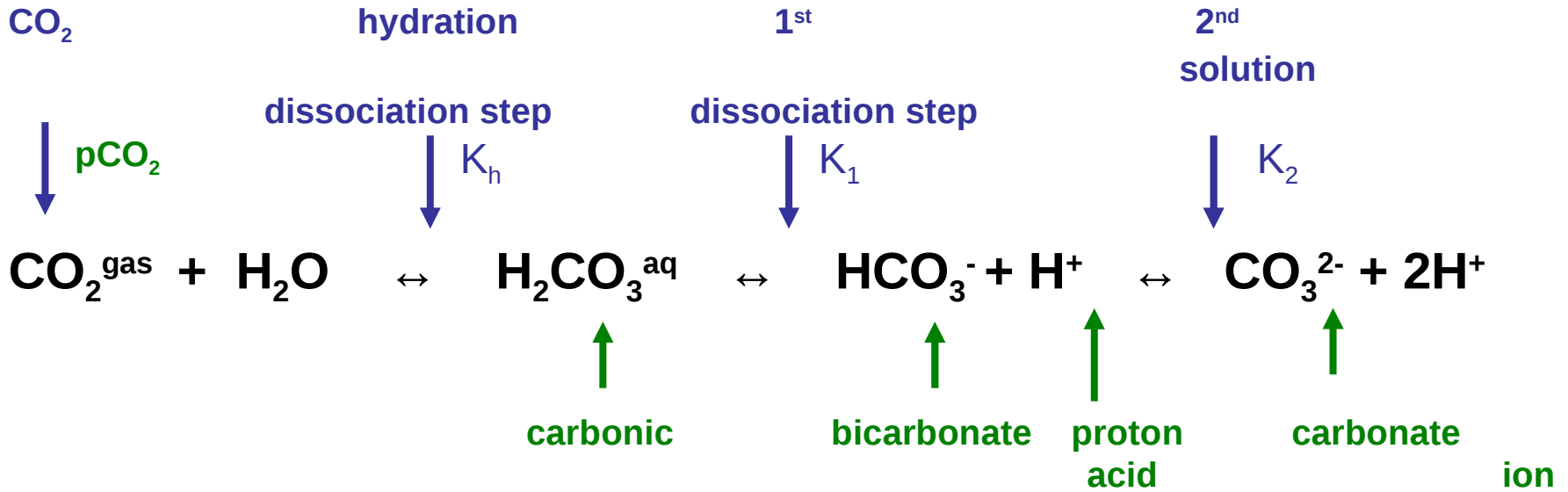
HAMSOM

- Hamburg Shelf Ocean Model
- 3D baroclinic, coupled ice-ocean model
- 7 km grid
- 16 z-levels
- NCEP atmospheric forcing
- T,S: BarKode
- M_2 tide included

— Model
— Obs.



Carbon in seawater



total alkalinity, seawater property determining ion dissociation of weak acids

$$A_T = [\text{HCO}_3^-] + 2[\text{CO}_3^{2-}] + [\text{B}(\text{OH})_4^-] + [\text{OH}^-] - [\text{H}^+] + \text{small terms}$$

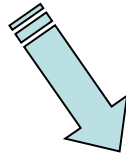
$$C_T = [\text{CO}_2 + \text{H}_2\text{CO}_3] + [\text{HCO}_3^-] + [\text{CO}_3^{2-}]$$

total carbon /

dissolved inorganic carbon

If 2 of the variables are known, all the others can be computed

HAMSOM
T, S



K_1, K_2, K_h, K_w, K_b
 $p\text{CO}_2(\text{sw}), A_T$



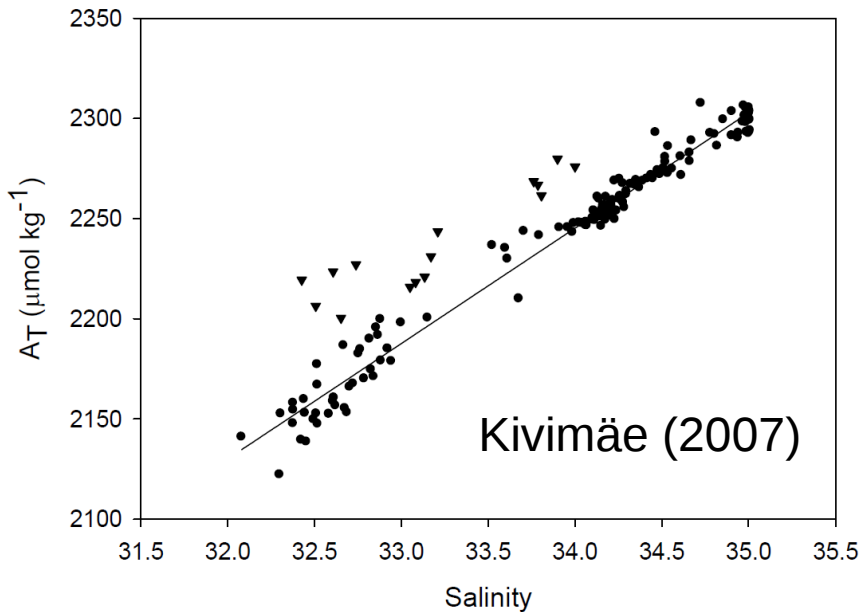
$S_0 = p\text{CO}_2 \cdot K_h$
 $C_{T0} = s_0(1 + K_1/h + K_2/h^2)$

- Use empirical relationships to estimate alkalinity, seawater CO_2 partial pressure, and dissociation constants



Carbon system model

- Use empirical relationships to estimate alkalinity, seawater CO_2 partial pressure, and dissociation constants



Barents Sea:

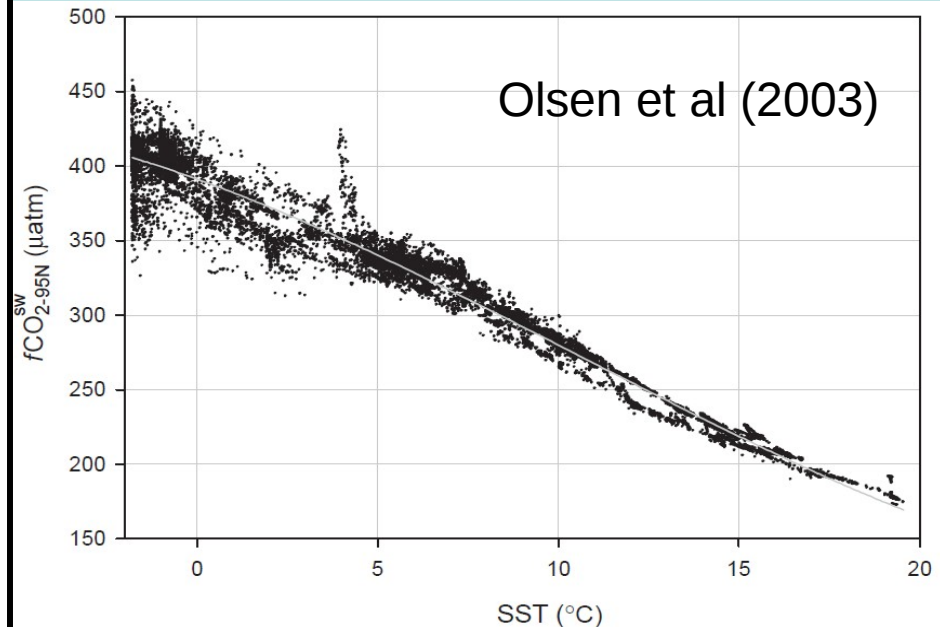
$$\text{TAlk} = 57.6 \cdot S + 288$$

$$R^2 = 0.98$$

Northern North Atlantic:

$$f\text{CO}_2 = 391.13 - 8.71 \cdot T - 0.36 \cdot T^2 + 0.011 \cdot T^3$$

$$R^2 = 0.97$$



Carbon system model

$$K_0 = [CO_2]/pCO_2^w$$

$$\ln K_0 = 9345.17/T - 60.2409 + 23.3585 \cdot \log(T/100) \\ + S \cdot (0.023517 - 0.00023656 \cdot T + 0.0047036(T/100)^2)$$

$$K_1 = [H^+][HCO_3^-]/[CO_2]$$

$$pK_1 = 3633.86/T - 61.2172 + 9.6777 \cdot \log(T) - 0.011555 \cdot S + 0.0001152 \cdot S^2$$

$$K_2 = [H^+][CO_3^{2-}]/[HCO_3^-]$$

$$pK_2 = 471.78/T + 25.9290 - 3.16967 \cdot \log(T) - 0.01781 \cdot S + 0.0001122 \cdot S^2$$

$$K_b = [H^+][B(OH)_4^-]/[B(OH)_3]$$

$$\ln K_b = (-8966.90 - 2890.53 \cdot S^{1/2} - 77.942 \cdot S + 1.728 \cdot S^{3/2} - 0.0996 \cdot S^2)/T \\ + 148.0248 + 137.1942 \cdot S^{1/2} + 1.62142 \cdot S + (-24.4344 - 25.085 \cdot S^{1/2} - 0.2474 \cdot S) \\ \cdot \log(T) + 0.053105 \cdot S^{1/2} \cdot T$$

$$K_w = [H^+][OH^-]$$

$$\ln K_w = -13847.26/T + 148.96502 - 23.6521 \cdot \log(T) \\ + (118.67/T - 5.977 + 1.0495 \cdot \log(T)) \cdot S^{1/2} - 0.01615 \cdot S$$

Mehrbach et al (1973), Lueker et al (2000), Dickson (1990),
Millero (1995), Weiss (1974)



HAMSOM
T, S



K_1, K_2, K_h, K_w, K_b

$p\text{CO}_2(\text{sw}), A_T$

$$S_0 = p\text{CO}_2 \cdot K_h$$
$$C_{T0} = s_0(1 + K_1/h + K_1 \cdot K_2/h/h)$$

C:N NO_3
 $C_T = C_T + \Delta C_T$

$$s_1 = C_T / (1 + K_1/h + K_1 \cdot K_2/h/h)$$

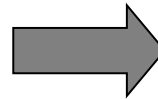
Photosynthesis => consumption of carbon

Nutrients (nitrate) important to biological activity



Carbon system model

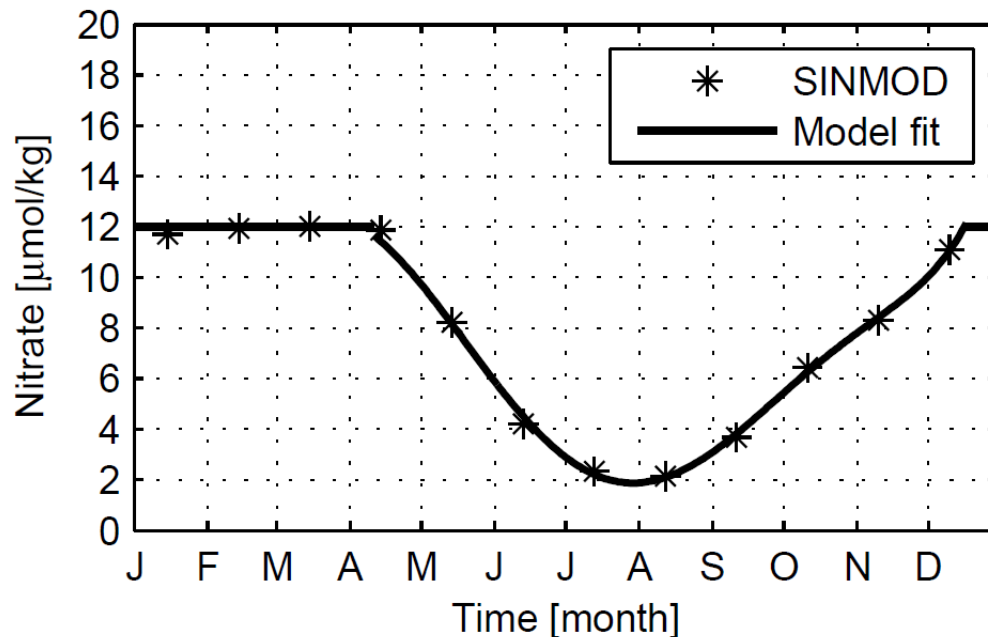
- *Biology/nutrients considered using a mean seasonal cycle of nitrate (NO_3).*



$$\text{C:N} = 8.75$$

Takahashi et al (1985), Kaitin et al (2002), Kivimäe (2007), Findlay et al (2008)

Seasonal cycle based on data from SINMOD, 2002-2006.



HAMSOM

T, S

Atmospheric CO₂

K_1, K_2, K_h, K_w, K_b

$p\text{CO}_2(\text{sw}), A_T$

$$S_0 = p\text{CO}_2 \cdot K_h$$

$$C_{T0} = s_0(1 + K_1/h + K_1 \cdot K_2/h/h)$$

C:N

NO₃

$$C_T = C_T + \Delta C_T$$

$$s_1 = C_T / (1 + K_1/h + K_1 \cdot K_2/h/h)$$

Air-sea exchange

$$C_T = C_T + \Delta C_T$$

CO₂

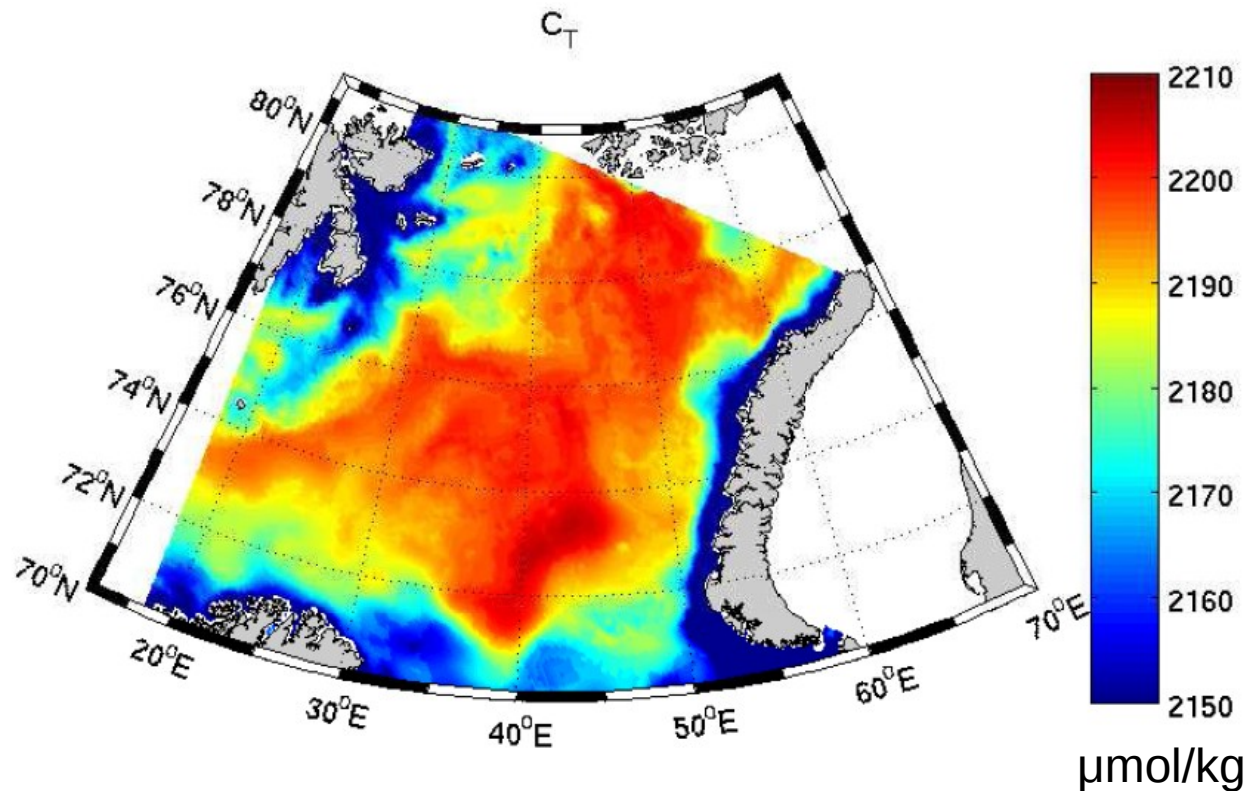
HCO₃⁻

CO₃²⁻

pH



Results – C_T

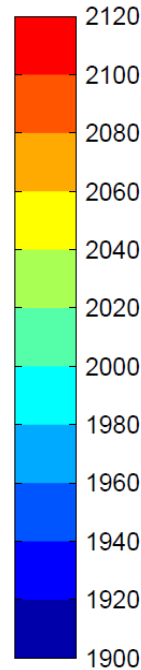
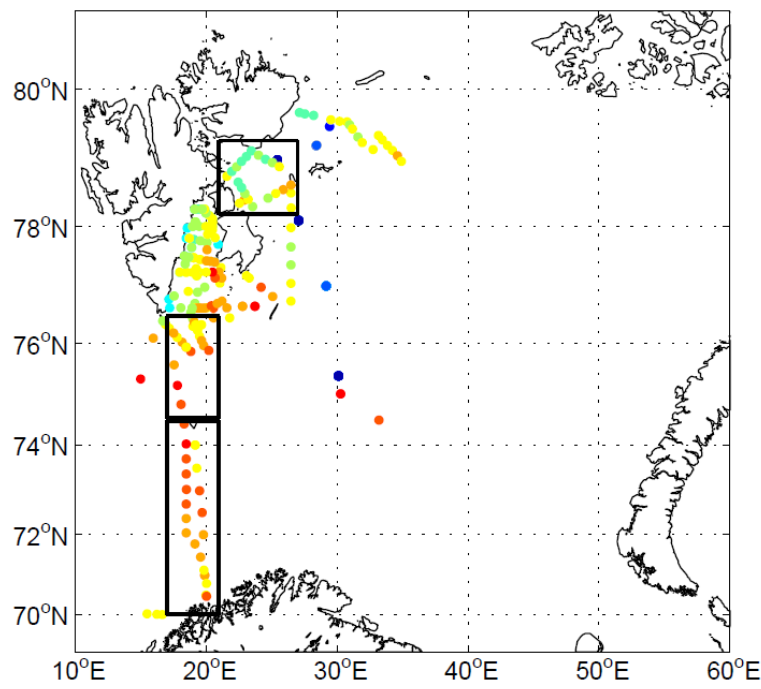


- Influenced by warm, saline Atlantic Water, fresher coastal water and cold Arctic Water
- Annual mean $C_T \sim 2150\text{-}2200 \mu\text{mol/kg}$

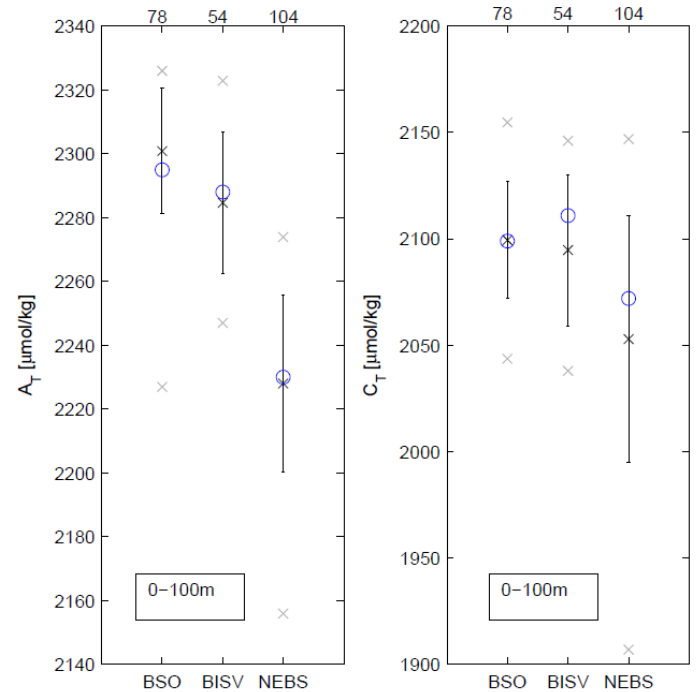


Results – C_T & A_T

C_T (Jun-Sep)



b)

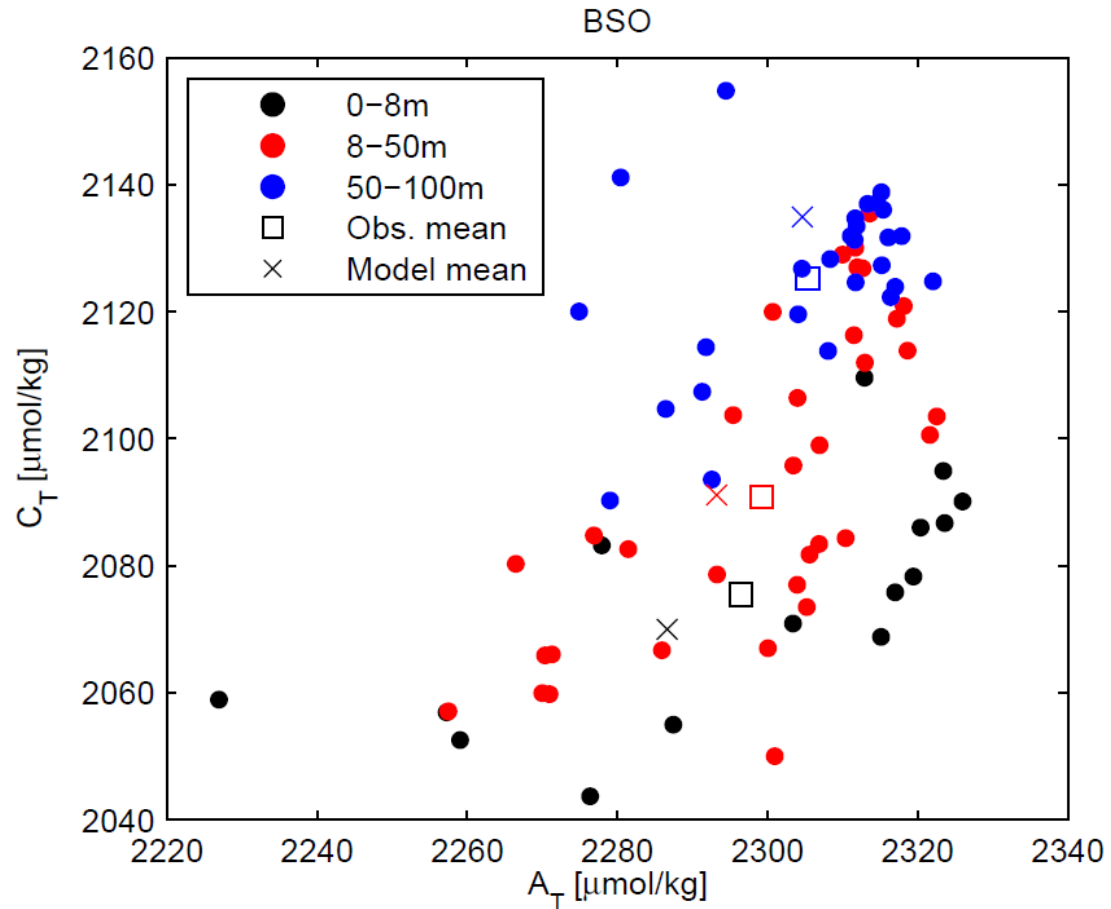
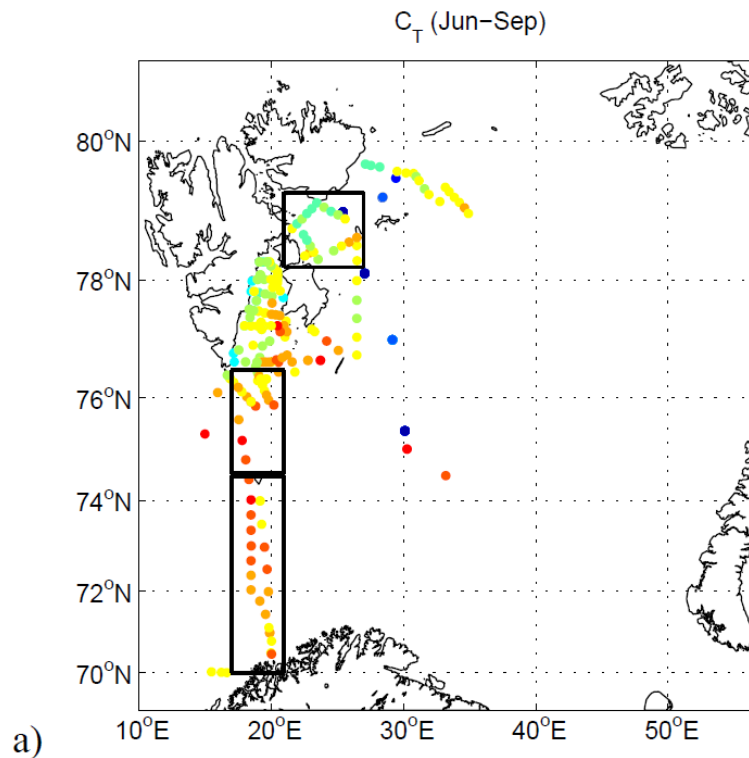


CARINA data 2000-2003

○ Model mean
— Obs. incl. std.



Results – C_T & A_T



CARINA data 2000-2003



Air-sea CO₂ flux

$$F = K_0 \cdot k \cdot (pCO_2^a - pCO_2^w)$$

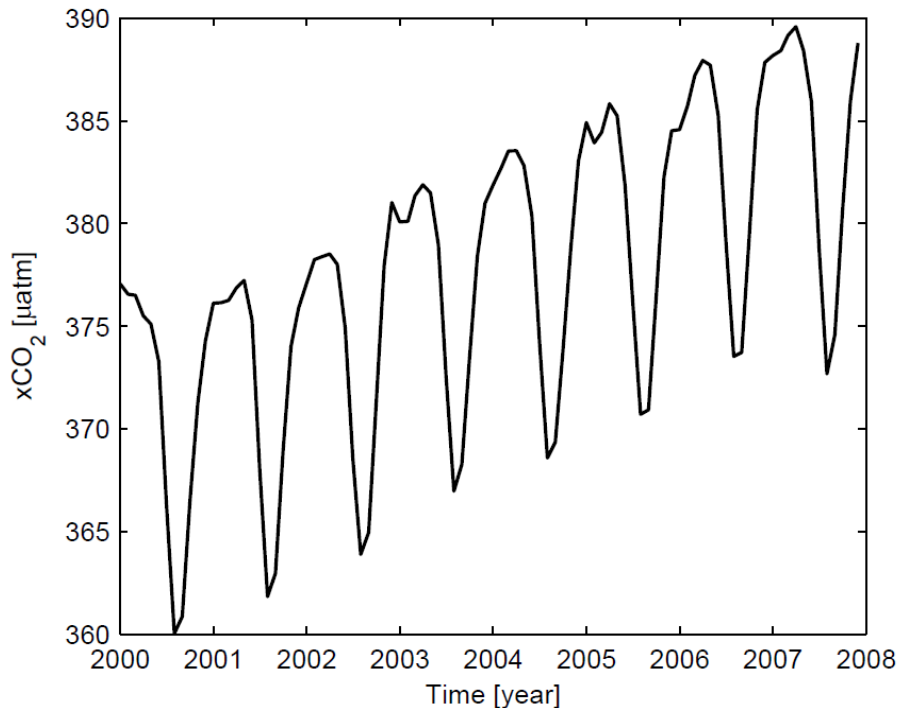
$$k = 0.26 (Sc/660)^{-1/2} W^2$$

K_0 : solubility of CO₂ in seawater

k : gas transfer velocity (Wanninkhof)

pCO_2^w : calculated (Zeebe & Wolf-Gladrow, 2001)

pCO_2^a : prescribed (Ny-Ålesund)



Air-sea CO₂ flux

$$F = K_0 \cdot k \cdot (pCO_2^a - pCO_2^w)$$

K_0 : solubility of CO₂ in seawater

k : gas transfer velocity (Wanninkhof)

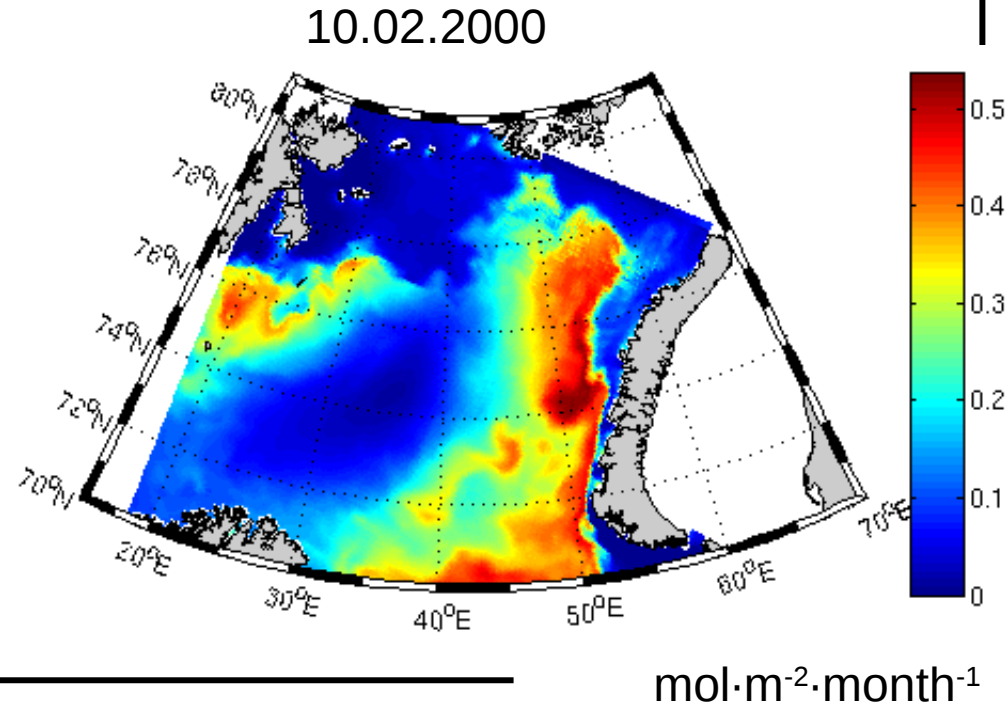
pCO_2^w : calculated (Zeebe & Wolf-Gladrow, 2001)

pCO_2^a : prescribed (Ny-Ålesund)

The Barents Sea is a sink of atmospheric CO₂

To be investigated:

- regional variability
- seasonal cycle
- interannual variability



Air-sea CO₂ flux

$$F = K_0 \cdot k \cdot (pCO_2^a - pCO_2^w)$$

K_0 : solubility of CO₂ in seawater

k : gas transfer velocity (Wanninkhof)

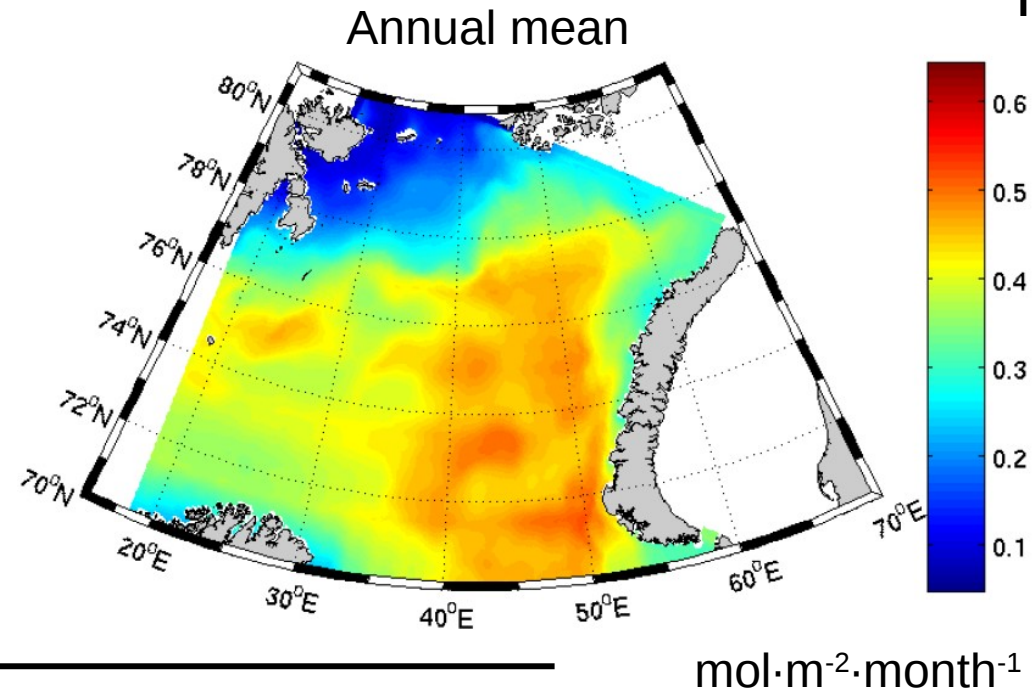
pCO_2^w : calculated (Zeebe & Wolf-Gladrow, 2001)

pCO_2^a : prescribed (Ny-Ålesund)

The Barents Sea is a sink of atmospheric CO₂

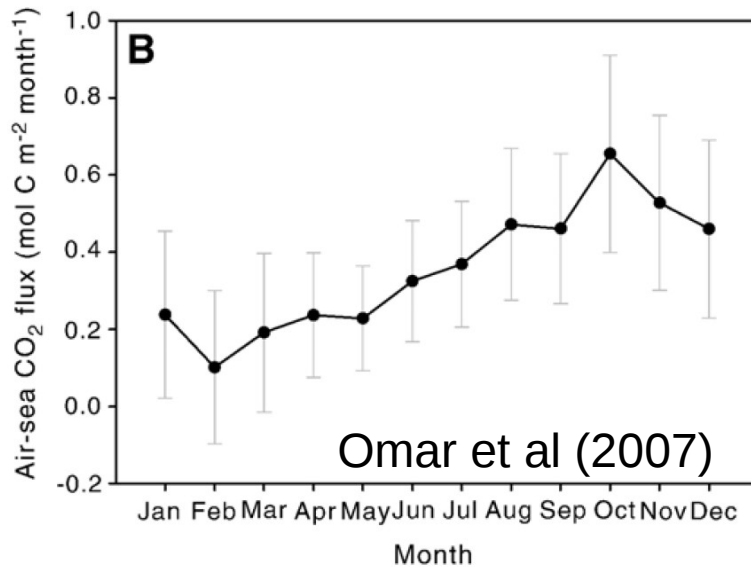
To be investigated:

- regional variability
- seasonal cycle
- interannual variability



Air-sea CO₂ flux

$$F = K_0 \cdot k \cdot (pCO_2^a - pCO_2^w)$$

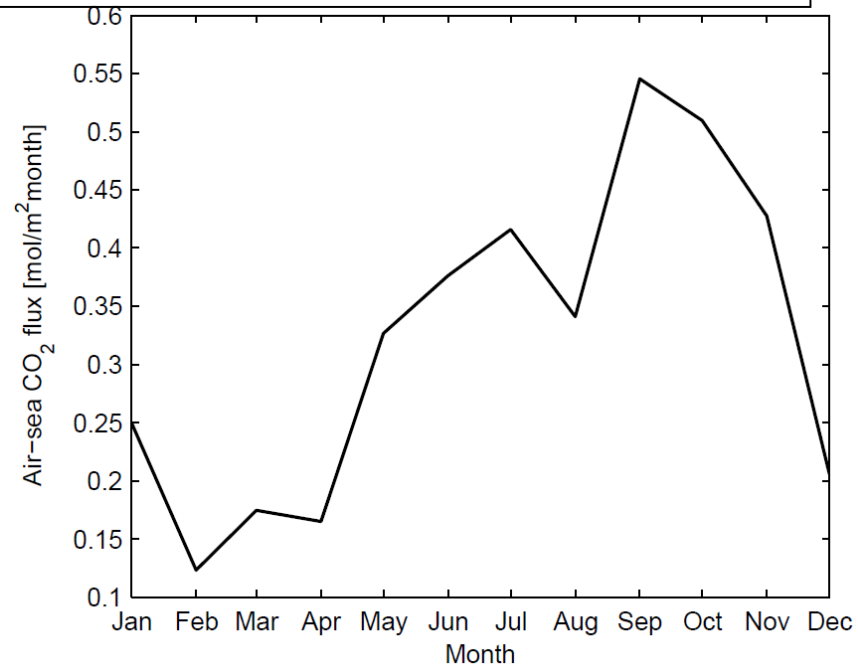


K_0 : solubility of CO₂ in seawater

k : gas transfer velocity (wind speed)

pCO_2^w : calculated (Zeebe & Wolf-Gladrow, 2001)

pCO_2^a : prescribed (Ny-Ålesund)



To be investigated:

- regional variability
- **seasonal cycle**
- interannual variability

mol·m⁻²·month⁻¹

Summary

- *An idealized carbon system model is successfully applied to the Barents Sea*
- *Dissolved inorganic carbon (C_T) and total alkalinity close to observed values*
- *The Barents Sea acts as a sink for atmospheric CO_2*

- *Evaluation of empirical relationships*
- *Investigate interannual variability*
- *Processes important to CO_2 fluxes, including C_T release during sea-ice formation*



Thank you

Questions??

