



NCK

OpenEarth



Sprint session: web based access to coastal datasets

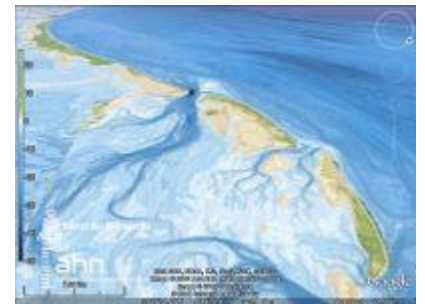
Coastal data are of paramount importance for coastal research. OpenEarth has made available a plethora of datasets via a uniform web access.

1. Raw data and processing scripts for researchers
2. standardized netCDF data for Matlab, Python or R
3. Google Earth visualizations for laymen

- Vaklodingen 20 m grid 1927-present
- AHN 100m grid
- TNO NCP 250m grainsize maps
- JarKus profiles 1965- present
- 5m coastal and Wadden Sea lidar grids
- Coast lines 1843 - present
- Suppetion database 1952 - present
- Sediment Atlas Wadden Sea
- timeseries: water levels, waves, SPM, T, S, ...

When: Wednesday 2011 march 16th
Time: 16:00 to icebreaker (20:00)
Where: NIOZ, Texel
Food available when you sign up.
Sign-up: Gerben.deBoer@deltares.nl

Bring your own laptop to practice!



For more info: www.OpenEarth.eu

