

Welcome!

Welcome to one of our courses we organise in learning to use and configure Delft-FEWS. In this memo we highlight some practical details for the upcoming course.

What is the programme?

The overall programme of the course week is as follows:

Date	Time	Topic	Lecturers	Location
Tuesday 11 th of March 2014	09.00 – 09.30	Welcome & Coffee	Gerben Boot Juzer Dhondia & Simone De Kleermaeker	Delta Plaza HH-0.23
	09.30 – 11.00	Introduction + Demonstrations		
	11.00 – 12.00	Configuration Course / Exercises		
	12.00 – 13.00	Lunch		
	13.00 – 16.30	Configuration Course / Exercises		
Wednesday 12 th of March 2014	09.00 – 09.30	Welcome & Coffee	Juzer Dhondia & Simone De Kleermaeker	HH-0.23 Delta Plaza
	09.30 – 12.00	Configuration Course / Exercises		
	12.00 – 13.00	Lunch		
	13.00 – 16.15	Configuration Course / Exercises		
	16.15 – 16.30	Course Evaluation and Closure		
	16.30	Drinks		

An impression of topics which are touched during the courses are:

Introduction

- About forecasting and forecasting/operational systems;
- Delft-FEWS concepts and components;
- Live system demonstration(s);

Introductory Configuration Course

The introductory configuration course contains a logical sequence of topics which are followed by exercises working towards a Delft-FEWS application.

- Delft-FEWS configuration files;
- Locations and locationsets;
- Workflows and modules;
- Importing and presenting data;
- Thresholds;
- Running a unit hydrograph model;
- Exercises;

What and how to pay for this course?

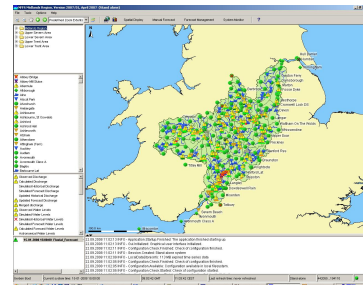
The price for this 2-day course is € 1125.- (excl. VAT). You will receive an invoice during the course. If any specific reference should be on this invoice, please let us know beforehand.

How to get to Deltares?

The course will be held at the Deltares' office, Rotterdamseweg 185, Delft

Rotterdamseweg 185, Delft, The Netherlands
P.O. Box 177
2600 MH Delft, The Netherlands
tel.: + 31 (0)88 335 8273

<http://www.deltares.nl/en/contact>



Questions?

If you might have questions after reading the above mentioned information, do not hesitate to contact us at fews-pm@deltares.nl or + 31 88 335 8366 (Gerben Boot)

Regards,

Deltares Academy (academy@deltares.nl)
FEWS Product Management (fews-pm@deltares.nl)