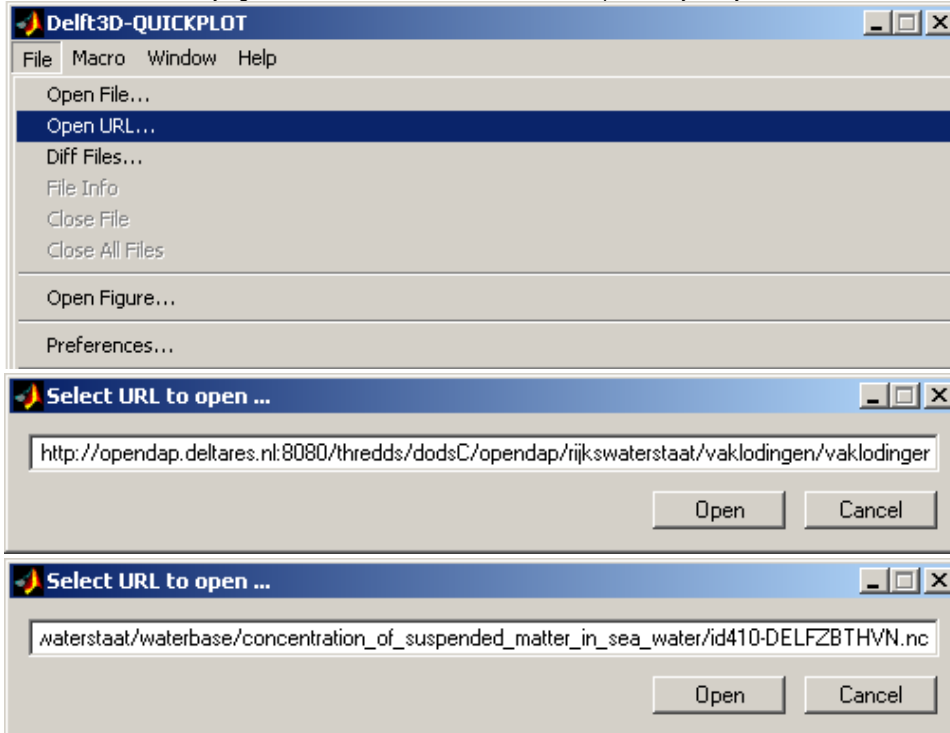


OPeNDAP access with Delft3D-Quickplot

Accessing netCDF/OPeNDAP data with Delft3D-Quickplot.

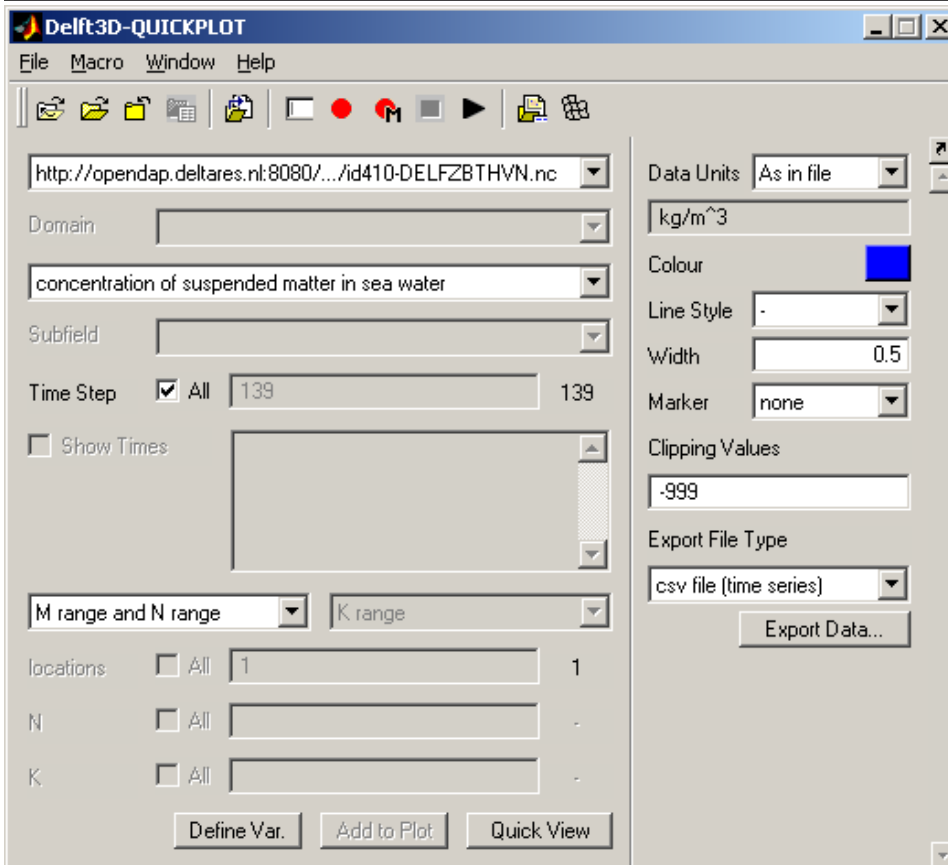
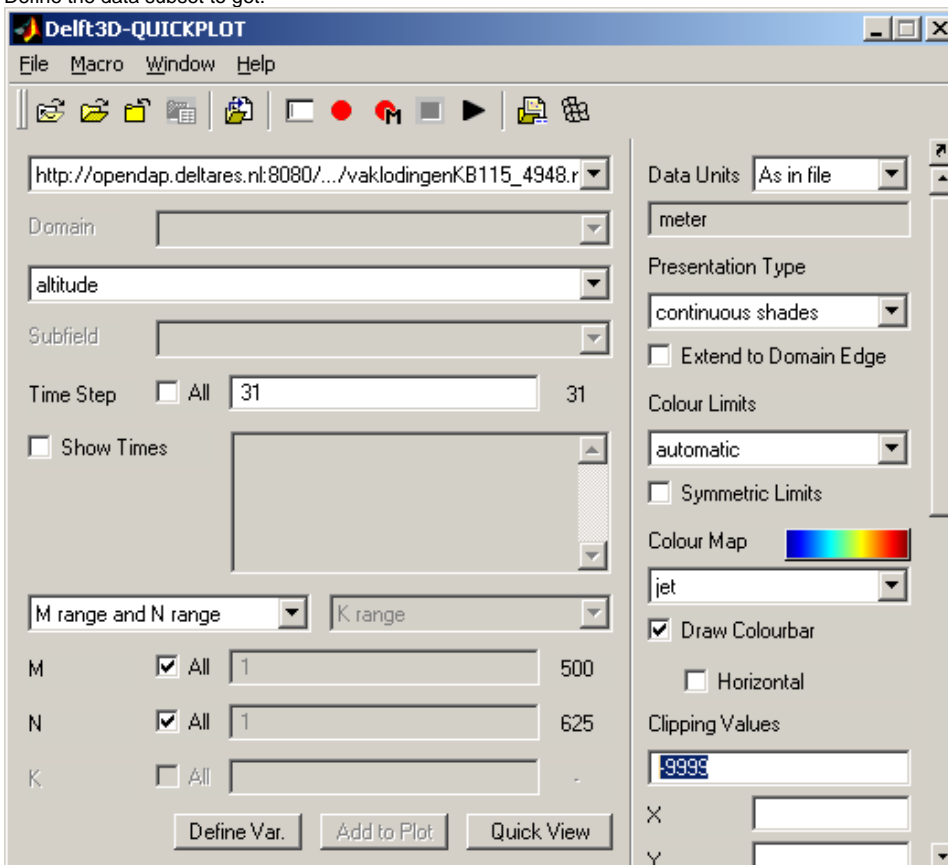
Get [Delft3D](#) (code is available as open source since jan 1st 2011). (Download [Delft3D-Quickplot-OPeNDAP manual](#).)

1. select menu file > url and paste the url you just copied. Delft3D-Quickplot will now download the meta-information from the OPeNDAP server. Even if when the underlying file would be a hundreds of GB, this step is always very fast.



2. Select the variable you want to plot by looking at the file contents

3. Define the data subset to get.



4. et voila

