

Viewers

Data viewers

See also: [Data sharing initiatives](#).

Web map services

See also: [WxS servers](#)

Portals:

- [Open Earth Viewer](#) (maintained and developed by Deltares)
- <http://maps.google.com/>
- <http://maps.yahoo.com/>
- <http://www.bing.com/maps/>
- [Water Footprint](#) made with [Nine-E](#) (Nominee [Dutch data prize 2012](#))
- [geoplaza](#) (Nominee [Dutch data prize 2012](#))
- <http://podaac-tools.jpl.nasa.gov/soto/>
- Lizard
 - <http://demo.lizard.net/> (demonstration page)
 - <http://web.lizardsystem.nl/> (Internet Explorer only)
 - <http://test.gmdb.lizardsystem.nl/> (all browsers)
 - <http://flooding.lizard.net/> (Internet Explorer only)
 - [Kustviewer](#) (Kustviewer)
- <http://pmr-geoserver.deltares.nl/iraq/> (maintained and developed by Deltares)
- <http://www.aquaro.nl>
- <http://matroos.deltares.nl>
- <http://www.noordzeeatlas.nl/en/nzaEn.html>
- http://geo.provincie-utrecht.nl/publiek/bodemkaart_veengebieden/index.html
- [Watlas](#)
- [godiva2](#) , [godiva2 ECOOP](#)
- <http://cwmi.nitg.tno.nl> (not operational any more)
- <http://zldags.zeeland.nl/geo/>
- <https://software.grontmij.nl/Pages/Sitemap.aspx>
- [IMOS Ocean Portal](#)
- [COSYNA](#)
- [Rijkswaterstaat mapviewer](#)
- [Brown Field Navigator](#)
- [Nature2000 portal](#)
- [EMODNet overall portal](#)
 - [Bathymetry](#)
 - [Physics](#)
 - [Chemistry](#) (<http://www.emodnet-chemistry.eu/>)
- [Earth2Observe](#)

Viewers:

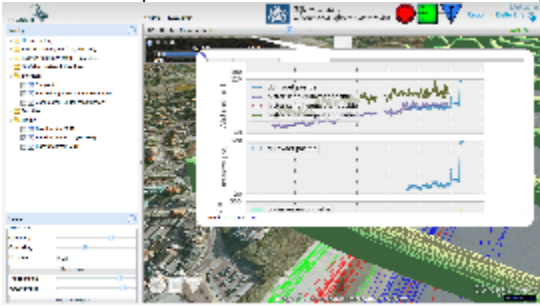
- [Baltic Nest Java application](#) (DSS met data en modellen)
- [uDIG](#)
- [Gaia](#)
- [ArcGIS](#)
- [Google Earth](#)
- [Quantum GIS](#) (Open Source GIS with complete GIS functionality, including 3D).
- [OpenEarth Viewer](#) (Google Earth visualizations of data, models and tools within a.o. the Building with Nature program)
- [BAFU](#) (Hydrologische Grundlagen und Daten (Swiss site))
- [Wasserstande Deutschland](#)
- [Wasserwirtschaft Land Vorarlberg](#)
- [European real-time data service](#) (not operational)
- [INSPIRE portal](#)
- [MapCompare](#) - Geofabrik (compare different open maps, more tools at <http://tools.geofabrik.de/>)

Technologies:

- <http://openlayers.org/>
- <http://www.opengeospatial.org/standards/wms>
- [WebGL examples](#)
 - <http://math.ucr.edu/~karl/WebGL/Terraincontrol.html>
 - <http://madebyevan.com/webgl-water/>
 - <https://www.chromeexperiments.com/webgl>

Examples:

This is an example of the [kustviewer](#) with a combination of OpenEarth KML files and auto generated charts of the coastal state:



Comparisons:

- [O'Dea et al, 2011. \(pdf author's copy\)](#)