
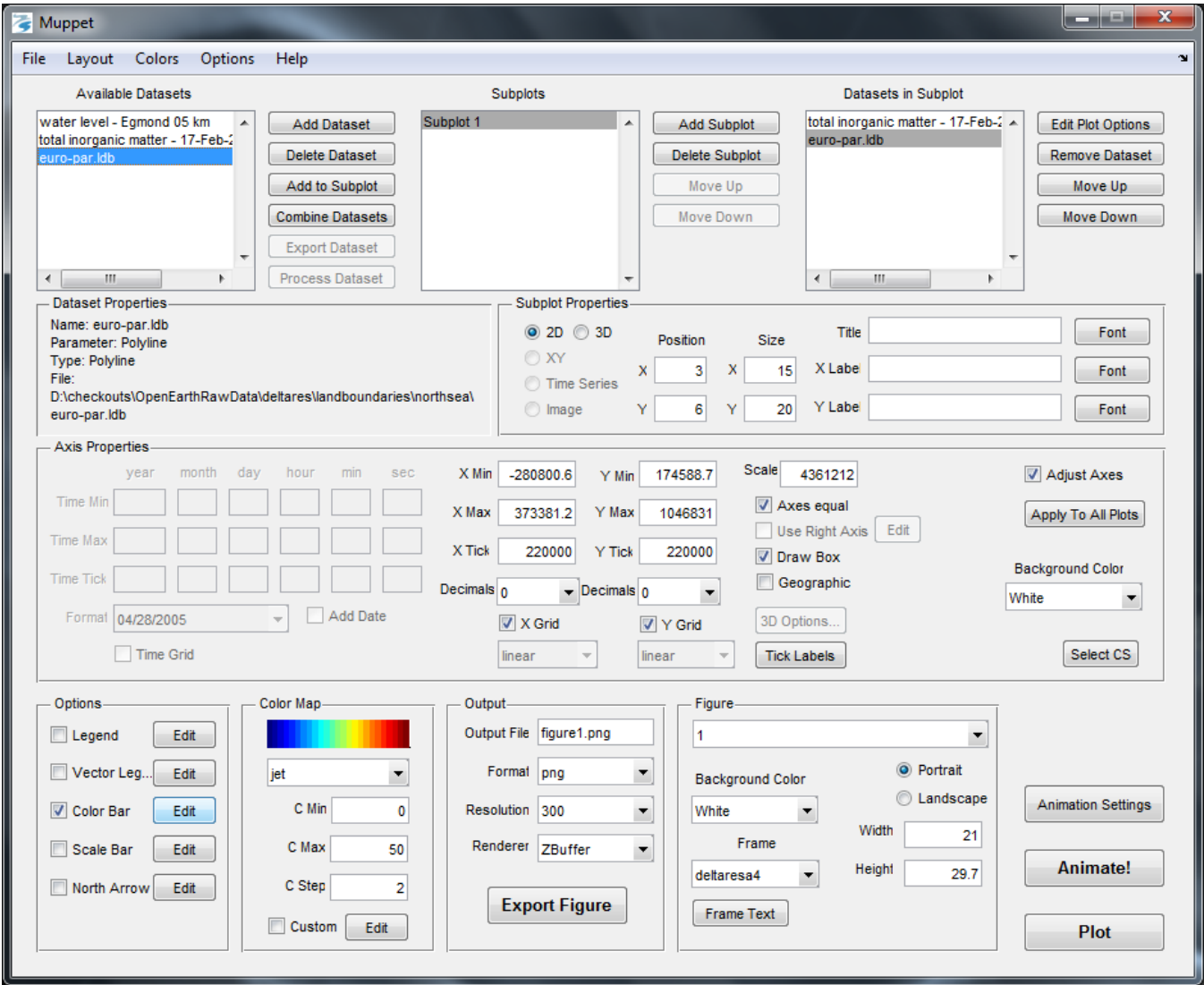
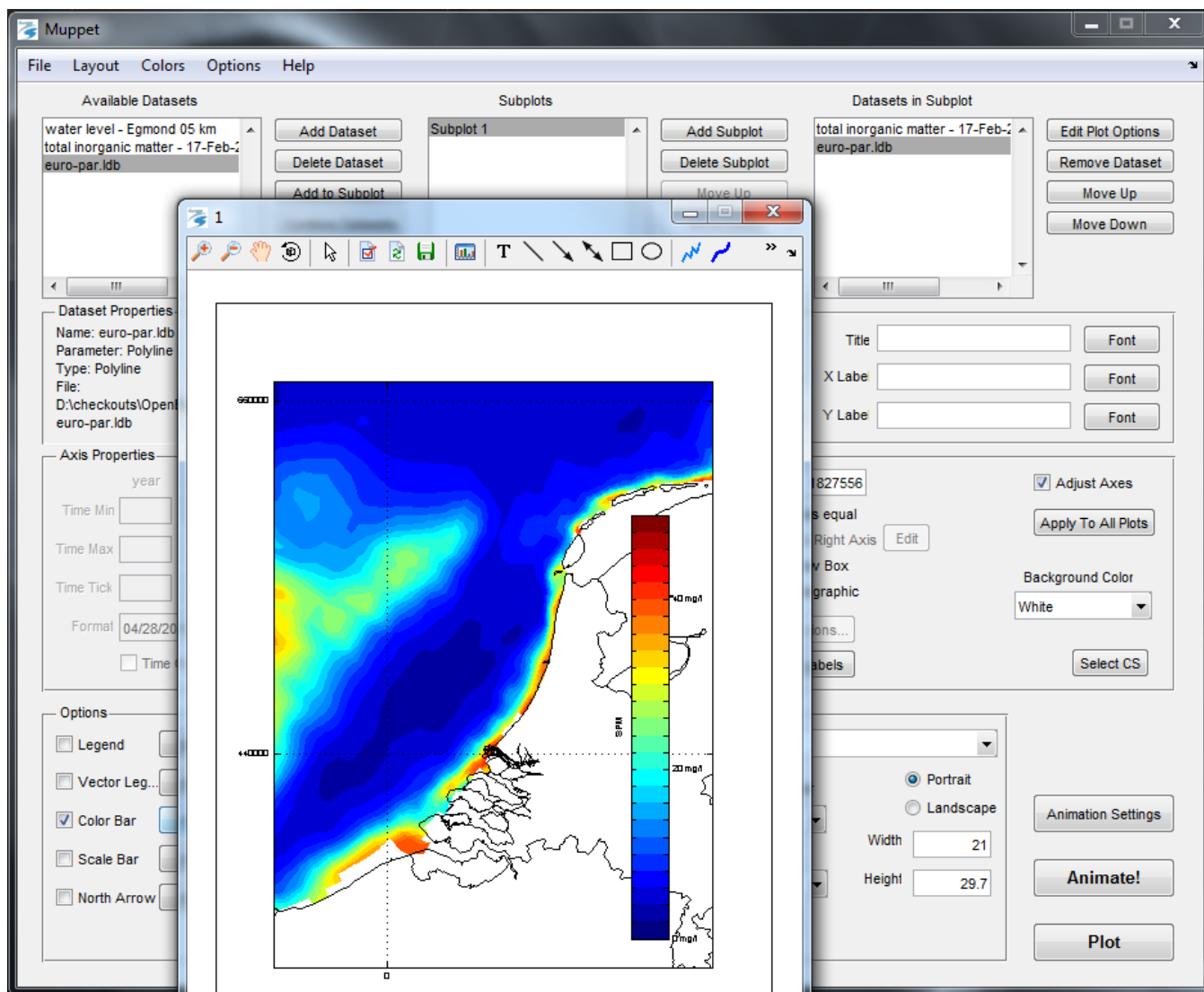


# Muppet

 Under construction.

## Description





Not yet available.

## Download

The newest version of Muppet can be downloaded below.

**Note1:** This application requires the installation of **Matlab Compiler Runtime (MCR)**. Please be aware that you need different versions of the MCR for 32-bit ([download](#)) and 64-bit ([download](#)).

**Note2:** Be aware that you need **writing permissions** on the drive on which you install Muppet!

File	Modified
ZIP Archive Muppet_v3.25_win32.zip Muppet v3.25 win32	27-09-2012 by Wiebe de Boer
ZIP Archive Muppet_v3.25_win64.zip Muppet v3.25 win64	01-02-2013 by Alessandro Tittone

[Download All](#)

## Help and support

## Installation notes

Before installing Muppet, make sure that the Matlab Compiler Runtime (MCR) v7.11 is installed on your system. The MCR installer can be downloaded [here](#).

To install Muppet, download and execute the msi installer package from the download section.

During the installation process, you can specify the installation location. Although the program itself does not require a large amount of memory, the program directory can become quite large due to data caching. Therefore, it is advised to install Delft Dashboard on a drive with sufficient memory available (> ?? GB).

After installing, you can start Muppet via the shortcuts in the windows start menu or on the desktop.