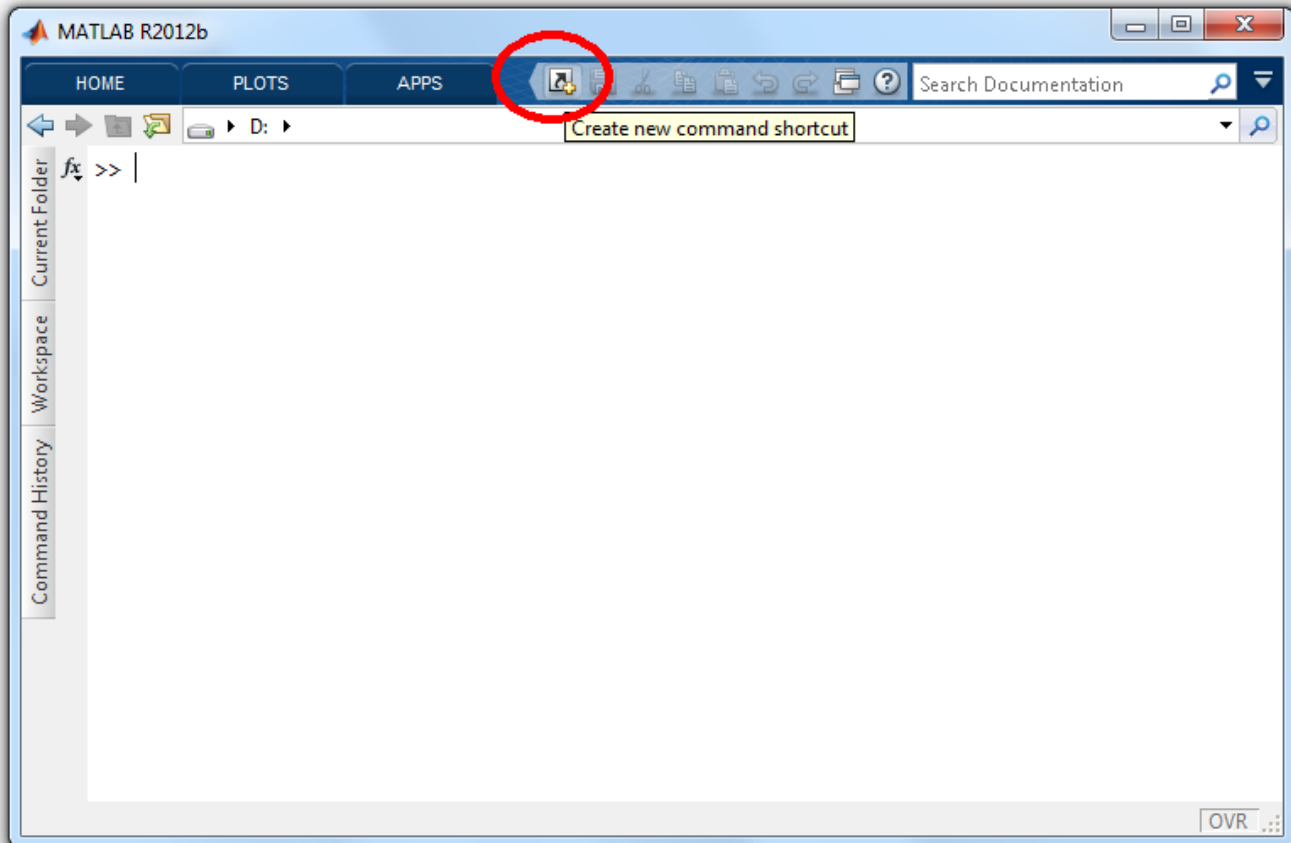


# oetsettings

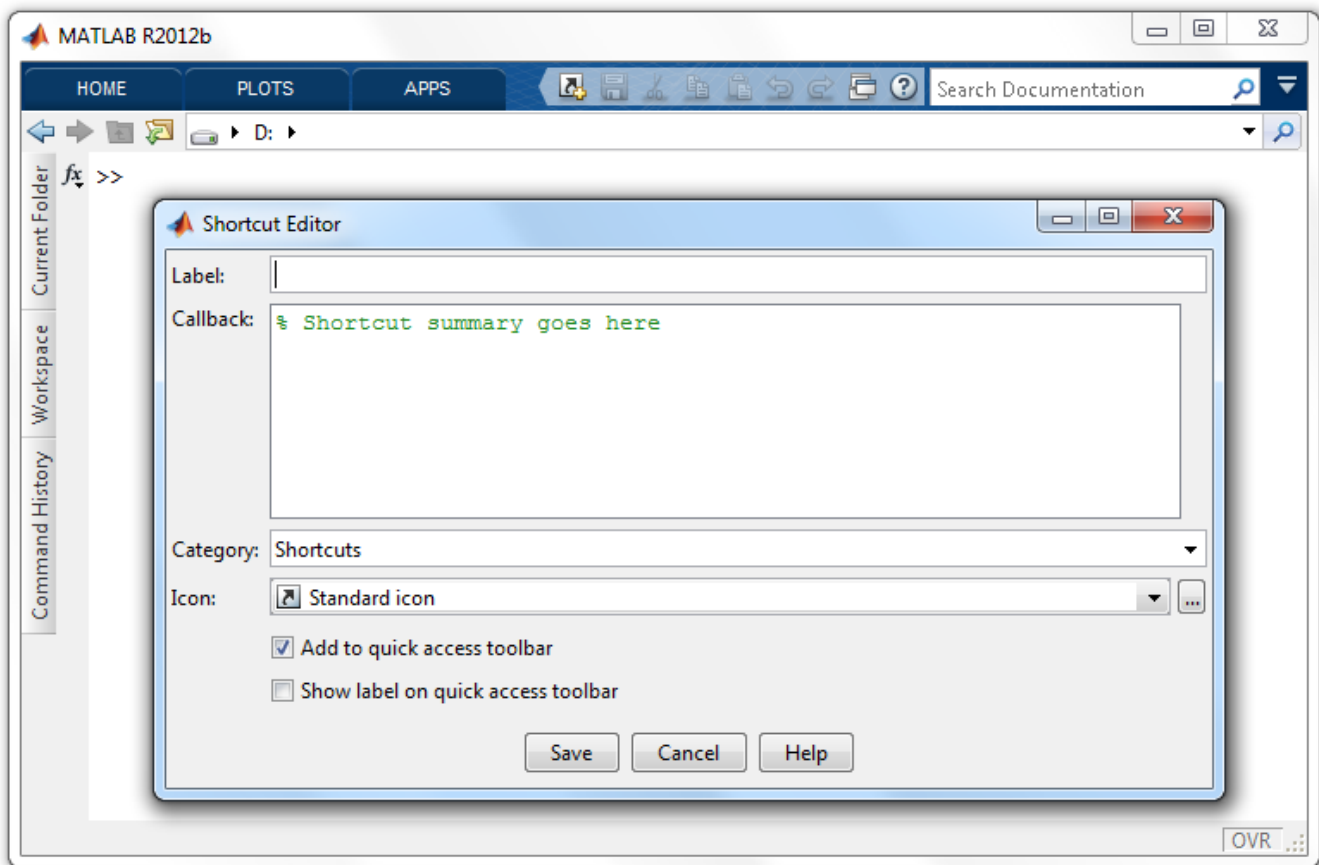
This page describes how to add the Matlab OpenEarthTools.

Make a svn checkout with [TorToisesvn](#). Do not use the usual `addpath` to add this to your Matlab `path` because this will take long and will also add hidden paths. OpenEarthTools contains a separate function `addpathfast` that is faster. In addition, `addpath` does not add an essential Java library, [java-netCDF](#). Java paths require a separate addition with `javaclasspath`. `oetsettings` does both things: it adds regular folders with `{addpathfast}` and adds a java library. You have to run `oetsettings` every time you start matlab. To make this easier, we recommend to make a shortcut link for this. Below is the order of event for Matlab R2012, but in older versions it is similar. We recommend to use the `run` command to make it work independent of where your checkout is.

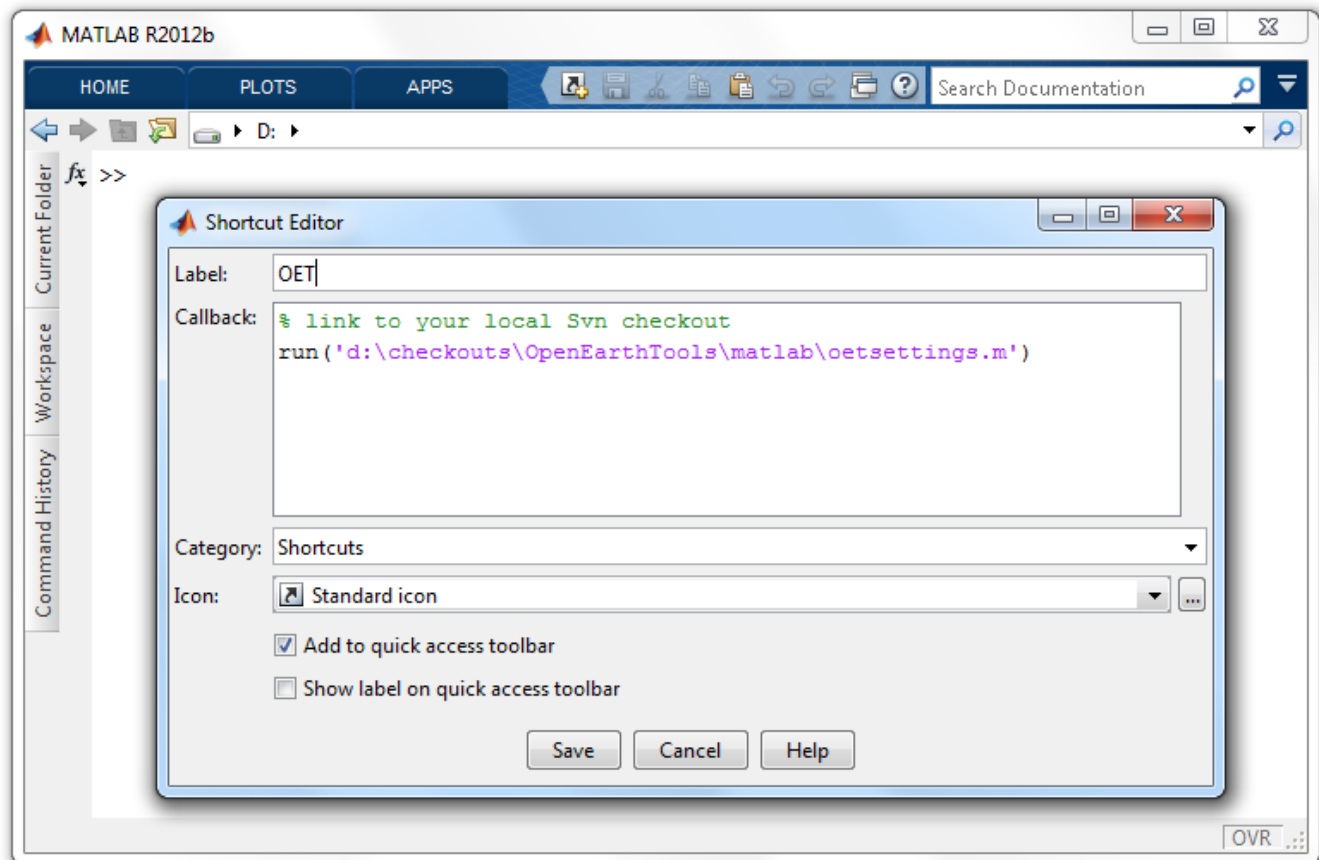
```
run('d:\checkouts\OpenEarthTools\matlab\oetsettings.m')
```



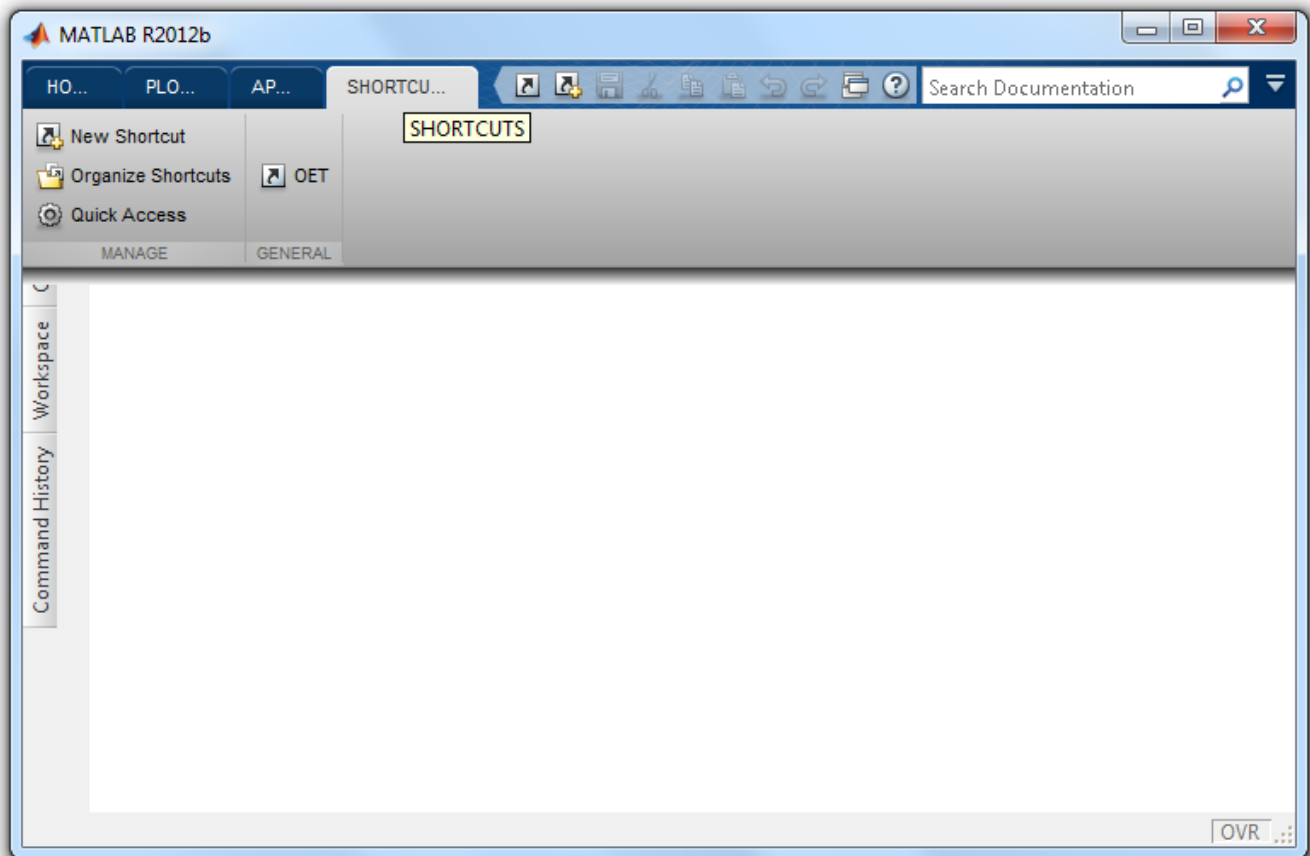
*add a new shortcut*



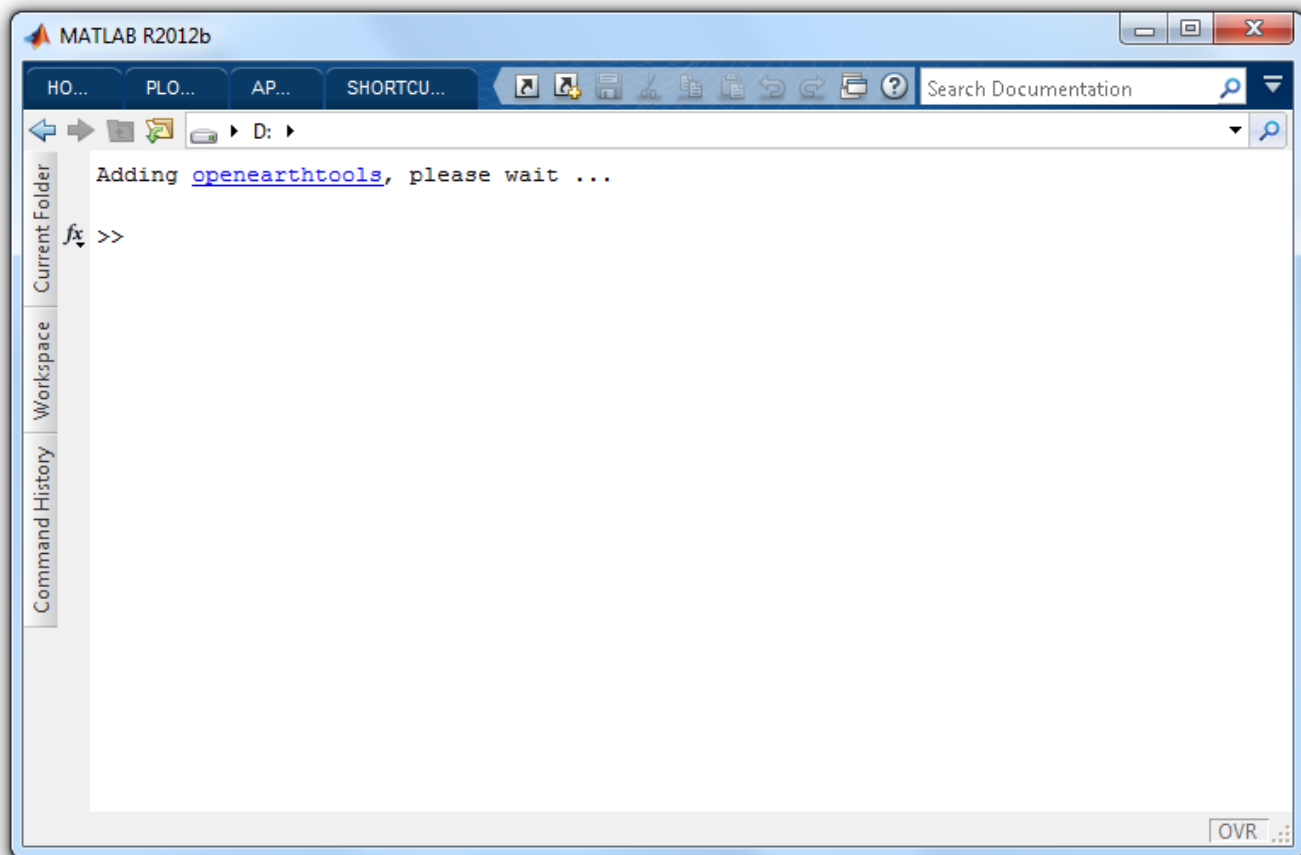
the shortcut pop-up



now add the run command



the shortcut is now ready to use



*and will start adding the tools when you click it*

Now you can proceed with using the tools for [plotting in Google Earth](#).